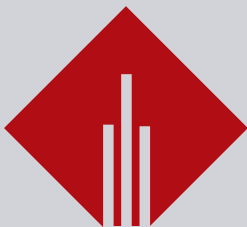


STANDART KALIP ELEMANLARI

Standard Die Components



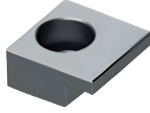
GNS
KALIP STANDARTLARI

KILAVUZLAMA ELAMANLARI

Guide Elements



Sayfa 52



Sayfa 53



Sayfa 54



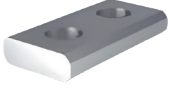
Sayfa 55

BTF01
BURÇ TUTUCU FLANŞ-CNOMO
E24.52.100
Toe Clamp for Bush Self-lubricating

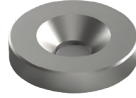
BTF02
KOLON BURÇ TUTUCU
Toe Clamp

KTF01
KOLON TUTUCU FLANŞ-PSA
E24.52.105.G / CNOMOE24.52.100
Guide Post Retainers

KTS01
KOLON SEĞMANLARI
Guide Posts Retainer Rings



Sayfa 55



Sayfa 56



Sayfa 56



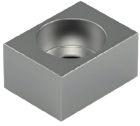
Sayfa 57

KKP01
KOLON KILITLEME PLAKASI
Guide Locking Plate

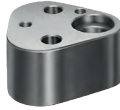
KMF01
KOLON MONTAJ FLANŞI
Retaining Disc

BKSF01
BİLYALI KAFES STOPLAMA FLANŞI
Ball Cage Stop Flange

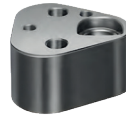
GDP01
GERİ DÖNÜŞ PALAKALARI
Positive Return Clamp for V
Drivers



Sayfa 57



Sayfa 58



Sayfa 58

KMA07
MATRİS TUTUCU KAMA VW/AUDI
39V 1304FORD WDX 05-70M
Key

HPR01
ZIMBA TUTUCULARI
Headed Punch Retainers

HPR02
ZIMBA TUTUCUARI
Headed Punch Retainers

HPR03
ZIMBA TUTUCUARI AYAR VE
DESTEK PLAKALARI
Shim Plates/Backing Plates

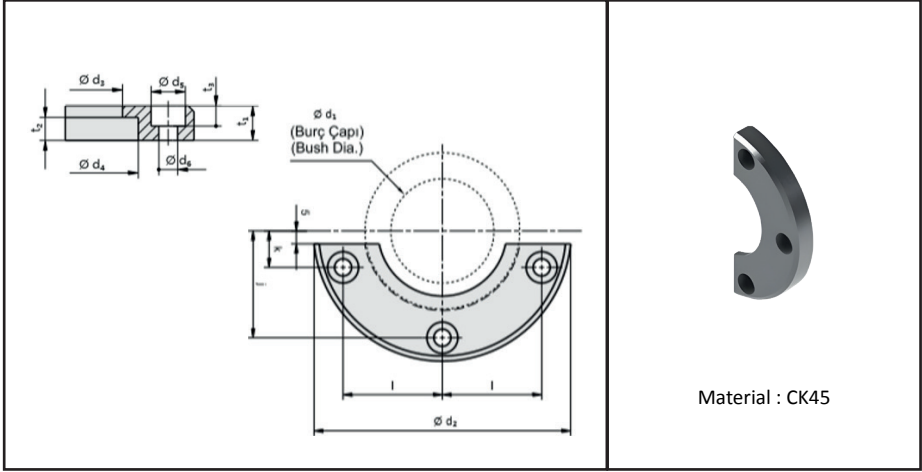
Sayfa 59

BÖLÜM 3

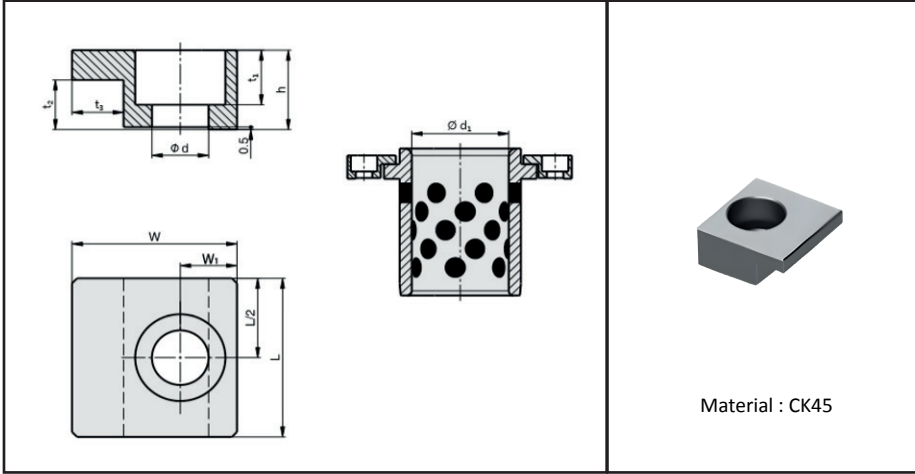


KILAVUZLAMA ELAMANLARI Guide Elements

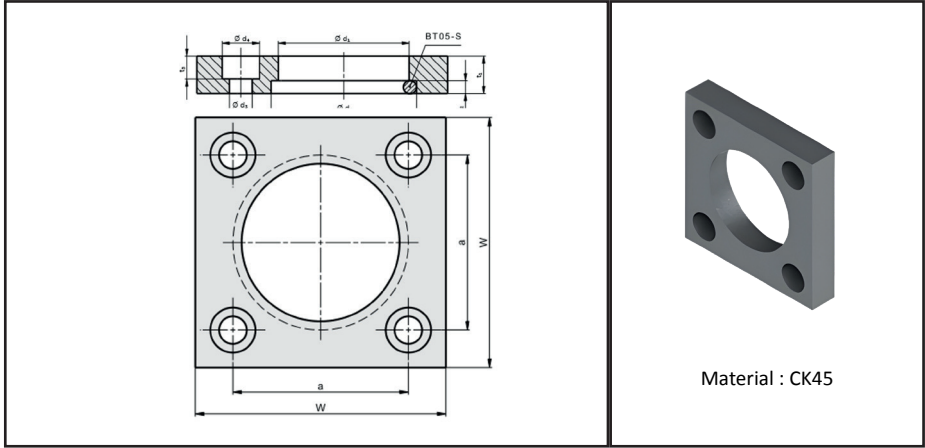
- BTF01 , BTF02
- KTF01
- KTS01
- KKP01
- KMF01
- BKSF01
- GDP01
- KMA07
- HRP01,02,03
- Burç Tutucular
- Kolon Tutucular
- Kolon Segmanları
- Kolon Kilitleme Plakası
- Kolon Montaj Flaşı
- Bilyalı Kafes Stoplama Flaşı
- Geri Dönüş Plakaları
- Matris Tutucu Kama
- Zimba Tutucuları
- Toe Clamp for Bush Self lubricating
- Guide Post Retainers
- Guide Posts Retainer Rings
- Guide Locking Plate
- Retaining Disc
- Ball Cage Stop Flange
- Positive Return Clamp for V Drivers
- Key
- Headed Punch Retainers



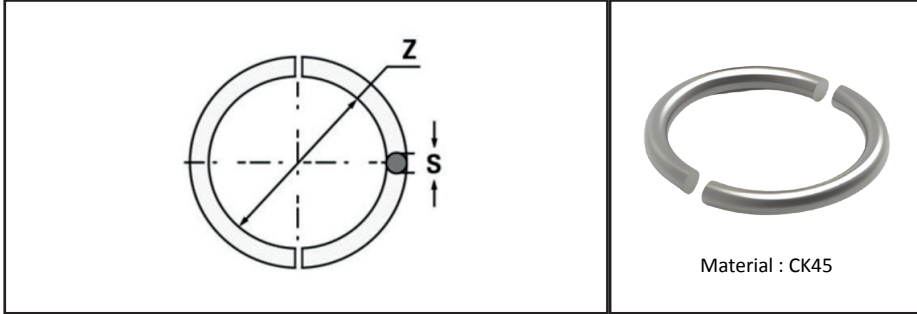
Kod-Code	d1	d2	d3	d4	d5	d6	t1	t2	t3	k	j	l
BTF01-25	25	72	32	41	12	6.6	10	5	7	20	-	20
BTF01-32	32	80	40	51	12	6.6	12	6	7	21	-	25
BTF01-40	40	100	50	61	12	6.6	12	8	7	14	41	38.5
BTF01-50	50	125	63	72	16	9	16	10	9	17	49	46
BTF01-63	63	140	80	91	18	11	20	12	11	17	57.5	55
BTF01-80	80	180	100	113	22	14	25	16	13	20	72	70
BTF01-100	100	200	125	141	22	14	32	20	13	25	85	81



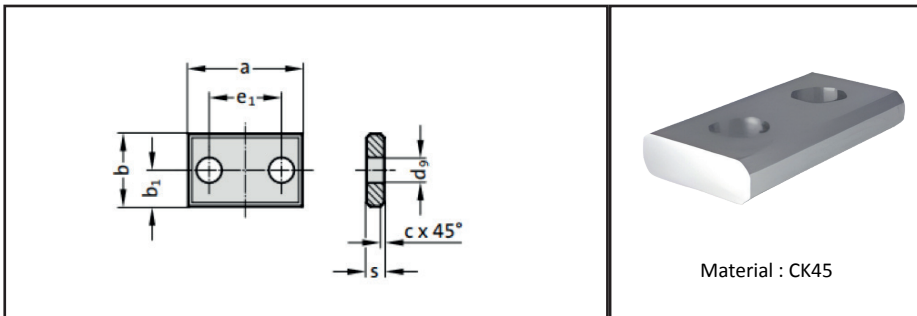
Kod-Code	L	W	d1	h	t1	t2	t3	W1	d
BTF02-01	20	20	Ø20-Ø40	10	7	6.3	5	7,5	7
BTF02-02	32	32	Ø50-Ø160	16	11,5	10	10	11	11,5
BTF02-03	32	32	Ø25-Ø125	16	11,5	6	10	11	11,5



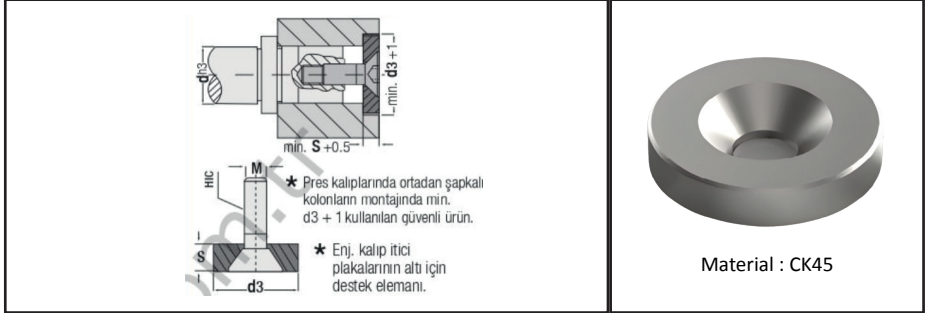
Kod-Code	W	d1	d2	t1	t2	t3	a	d3	d4
KTF01-25	45	25	28	10	2.7	7	31	6.6	11
KTF01-32	56	32	37	10	4.2	7	36	6.6	11
KTF01-40	70	40	45	12	4.2	7	50	6.6	11
KTF01-50	80	50	55	14	4.2	9	55	9	16
KTF01-63	100	63	70	18	6.2	11	70	11	18
KTF01-80	110	80	87	20	6.2	14	80	13	22
KTF01-100	140	100	107	20	6.2	14	100	13	22



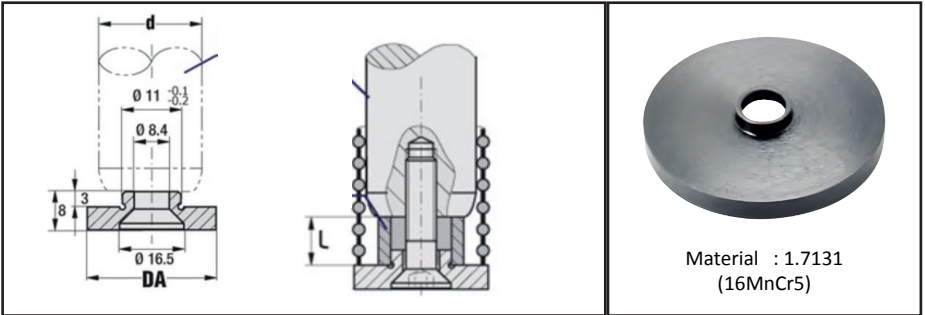
Kod-Code	Kolon	$\varnothing z$	s
KTS01-25	$\varnothing 25$	22.5	2.5
KTS01-32	$\varnothing 32$	28	4
KTS01-40	$\varnothing 40$	36	4
KTS01-50	$\varnothing 50$	46	4
KTS01-63	$\varnothing 63$	57	6
KTS01-80	$\varnothing 80$	74	6
KTS01-100	$\varnothing 100$	94	6

KKP01
KOLON KİLİTLEME PLAKASI
 Guide Locking Plate


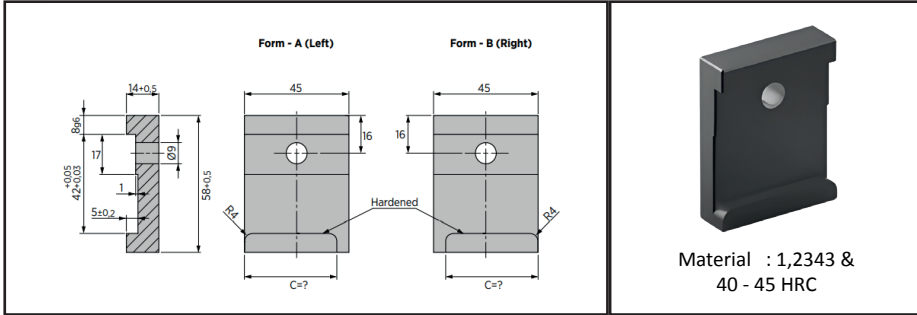
Kod-Code	Sütün \varnothing	a	b	s	c	b1	e1	d9
KKP01-25.32	25 u. 32	40	20	5	1	10	20	9
KKP01-40.50	40 u. 50	48	25	8	2	12.5	24	11
KKP01-63.80	63 u. 80	60	34	10	2	17	30	14



Kod-Code	Ø d3	Ø d	s	M
KMF01-22	22	15/16	5,5	M8X20
KMF01-25	25	19/20	5,5	M8X20
KMF01-32	32	24/25	5,5	M8X20
KMF01-40	40	32/30	7,5	M8X20
KMF01-50	50	38/40	9,5	M8X20
KMF01-60	60	48/50	9,5	M8X20
KMF01-73	73	60/63	9,5	M8X20
KMF01-93	93	80	12	M12X20

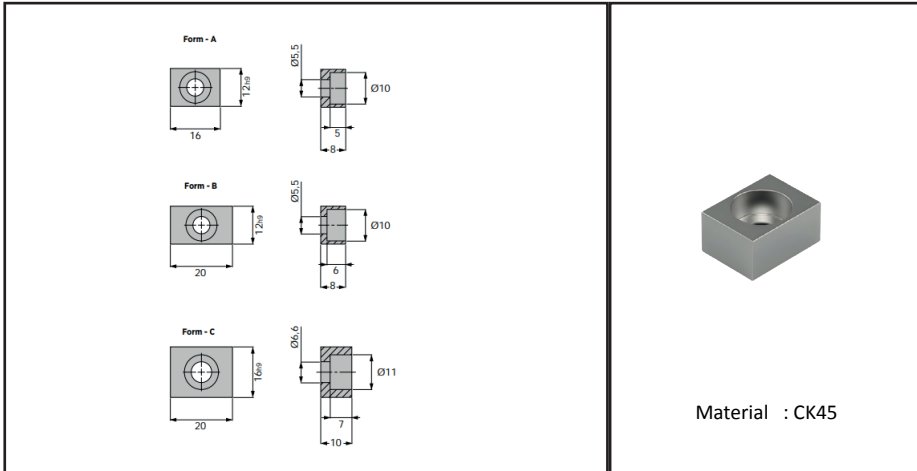


Kod	Ø d	DA
BKSF01-20	20	25
BKSF01-25	25	30
BKSF01-30	30	37
BKSF01-40	40	47
BKSF01-50	50	57
BKSF01-60	60	67
BKSF01-63	63	70

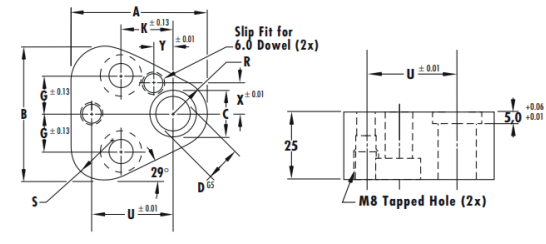


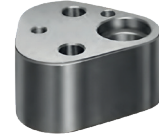
Kod-Code	Form	Yön-Location
GDP01-045-C	A + B	Her iki taraf - Set both sides
GDP01-045L-C	A	Sol-Left
GDP01-045R-C	B	Sağ-Right

KMA07
MATRİS TUTUCU KAMA VW/AUDI 39V 1304
FORD WDX 05-70M
Key



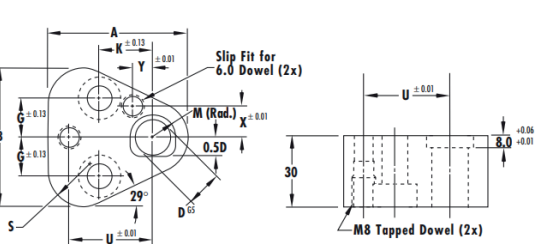
Kod-Code	Form
KMA07-A	A
KMA07-B	B
KMA07-C	C

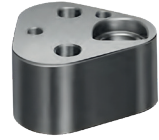




ISO 8020 round
True Location
Material : 1.7131 (16MnCr5) &
48 - 52 HRC

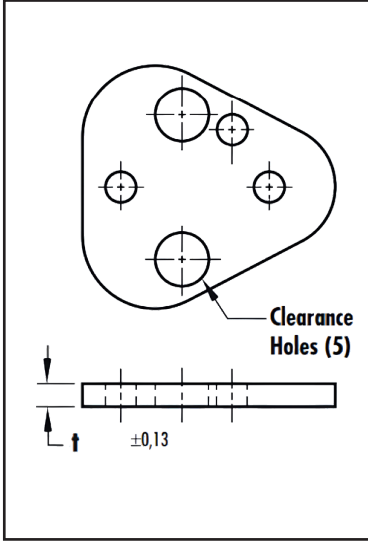
Kod-Code	D	A	B	C	G	K	R	S	U	X	Y	Screw Size
HPR01-10	10	44,5	43,7	14	11,1	19	9,5	12	26,925	9	7,5	M8
HPR01-13	13	50,8	50	17	14,3	19	12,7	15,2	29,97	12	6,5	M8
HPR01-16	16	54	53,2	20	15,9	19	14,3	16,8	31,75	13,5	6	M8
HPR01-20	20	60,3	59,5	24	17,5	19	17,5	20	33,53	16,5	5	M10
HPR01-25	25	69,9	69,1	29	19,8	23,8	22,2	24,7	40,64	22	7	M12
HPR01-32	32	69,9	69,1	36	19,8	23,8	22,2	24,7	40,64	22	7	M12





ISO 8020 Form
True Location
Material : 1.7131 (16MnCr5) &
48 - 52 HRC

Kod-Code	D	A	B	G	K	M	R	S	U	X	Y	Screw Size
HPR02-10	10	44,5	43,7	11,1	19	7	9,5	12	26,925	9	7,5	M8
HPR02-13	13	50,8	50	14,3	19	8,5	12,7	15,2	29,97	12	6,5	M8
HPR02-16	16	54	53,2	15,9	19	10	14,3	16,8	31,75	13,5	6	M8
HPR02-20	20	60,3	59,5	17,5	19	12	17,5	20	33,53	16,5	5	M10
HPR02-25	25	69,9	69,1	19,8	23,8	14,5	22,2	24,7	40,64	22	7	M12
HPR02-32	32	69,9	69,1	19,8	23,8	14,8	22,2	24,7	40,64	22	7	M12



Kod-Code	D	A mm (Soft)	B mm (55HRC)
HPR03-10A	10	1,8	
HPR03-10B	10		4,8
HPR03-13A	13	1,8	
HPR03-13B	13		4,8
HPR03-16A	16	1,8	
HPR03-16B	16		4,8
HPR03-20A	20	1,8	
HPR03-20B	20		4,8
HPR03-25A	25	1,8	
HPR03-25B	25		4,8
HPR03-32A	32	1,8	
HPR03-32B	32		4,8



2002
Kuruluş - Since

100*

Genesis Kalıp Aparat Mühendislik San. ve Tic. Ltd. Şti



www.gnskalip.com



Üçevler Küçük Sanayi
Sitesi 21.Sk. 34.Blok
No:71 16130 Nilüfer
BURSA / TÜRKİYE



+90 0533 435 44 52
info@gnskalip.com



GNS
KALIP STANDARTLARI