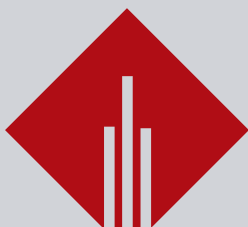


STANDART KALIP ELEMANLARI

Standard Die Components

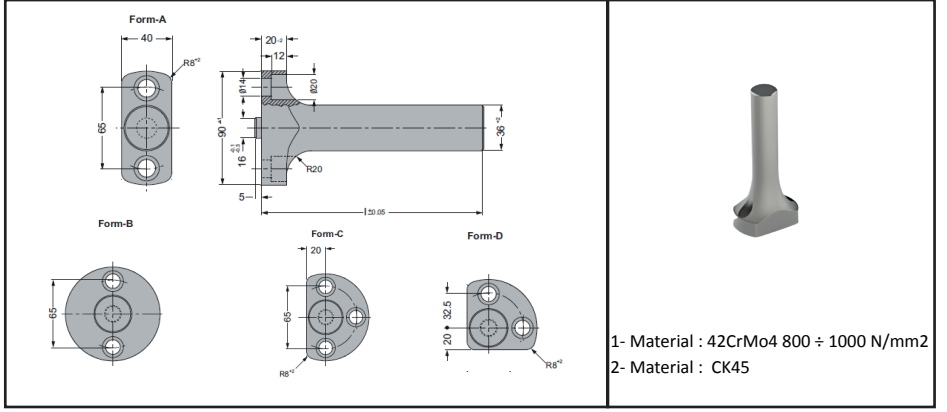


GNS

KALIP STANDARTLARI

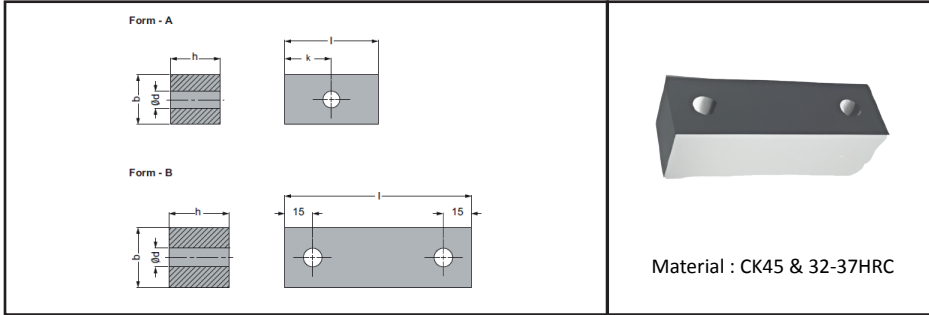
KALIP ELAMANLARI Die Components

				
Sayfa 62	Sayfa 63	Sayfa 63	Sayfa 64	Sayfa 65
AP01 BASKI PİMİ - VW/AUDI 39D 638 Air Pin	KMA01 KAMA PSA E24.56.630G Key	KMA02 KAMA PSA E24.56.630G Key	KMA03 KAMA PSA E24.56.630G Key	KMA04 KAMA Key
				
Sayfa 66	Sayfa 67	Sayfa 68	Sayfa 69	Sayfa 70
KMA05 KAMA VW/AUDI 39V 1304 Key	KMA08 KAMA BMW 3765 1Form- A BMW 3701 20 Form - B	SSB01 SİLİNDİR STOPLAMA BLOĞU Cylindrical Stop Block	SSB02 SİLİNDİR STOPLAMA BLOĞU Cylindrical Stop Block	DSB01 Dikdörtgen Stoplama Bloğu PSA E24.51.920.G Rectangular Stop Block
				
Sayfa 71	Sayfa 72	Sayfa 73	Sayfa 74	Sayfa 75
DSB02 Dikdörtgen Stoper	FR01 GÜVENLİK CİVATALARI Safety Bolts	FR02 GÜVENLİK CİVATALARI Safety Bolts	BAC01 BORULU ASKI CİVATALARI Retainer Bolt Sets	BAC02 BORULU ASKI CİVATALARI Retainer Bolt Sets
				
Sayfa 75	Sayfa 76	Sayfa 78	Sayfa 80	Sayfa 81
BAC03 BORULU ASKI CİVATALARI Retainer Bolt Sets	EB01 EMNİYET AMAÇLI BORULAR Spacer Tubes	EB02 EMNİYET AMAÇLI BORULAR Spacer Tubes	RP01 RONDELA Washer	RP02 RONDELA Washer
				
Sayfa 82	Sayfa 82	Sayfa 83	Sayfa 84	
MRP01 MERKEZLEME PİMİ Locating Pins	MRP02 MERKEZLEME PİMİ Locating Pins	AB03 EMNİYET PİMİ PSA E24.55.265G Pad Retainer Pins	AB04 EMNİYET PİMİ PSA E24.55.265G Pad Retainer Pins	



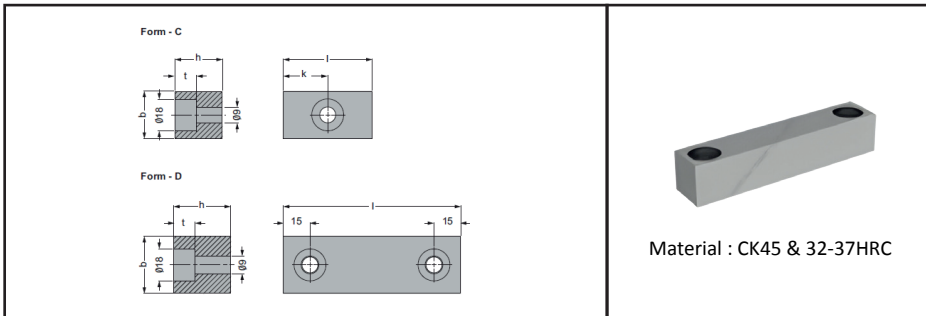
Kod-Code	Form
AP01-A-L?	A
AP01-B-L?	B
AP01-C-L?	C
AP01-D-L?	D

- Malzeme ve Uzunluk (L) müşteri tarafından verilir.
- Material and Length (L) is given by the customer.

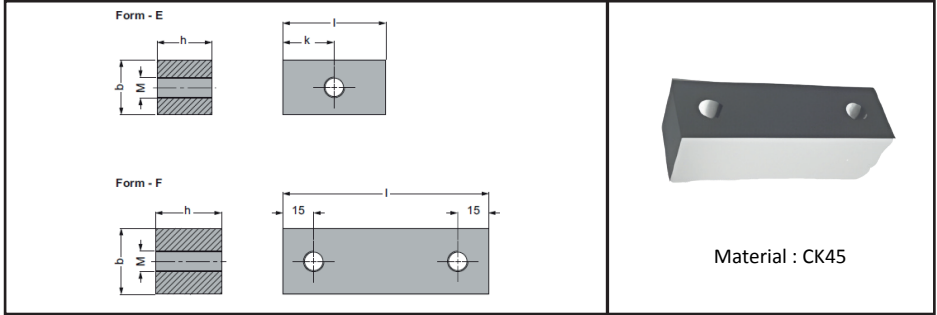


Kod-Code	b	h	l	d	k	Form
KMA01-20	20	20	50	9	25	A
KMA01-25	25	25	50	9	25	A
KMA01-32	32	32	100	11	-	B

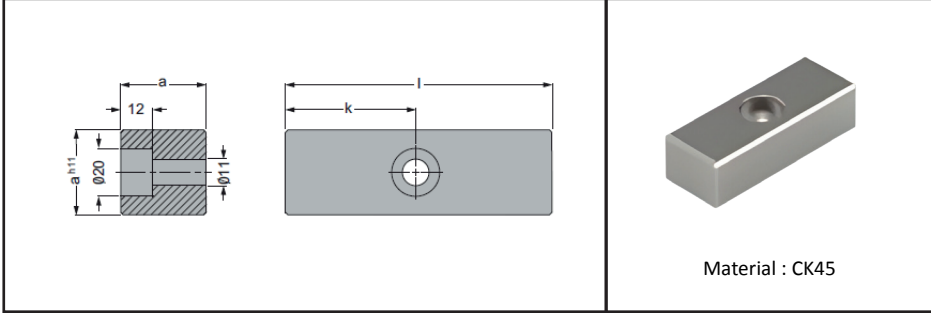
KMA02
KAMA PSA E24.56.630.G
Key



Kod-Code	b	h	l	t	k	Form
KMA02-25-50	25	25	50	12	25	C
KMA02-25-75	25	25	75	12	-	D
KMA02-32-50	32	32	50	9	25	C
KMA02-32-75	32	32	75	9	-	D

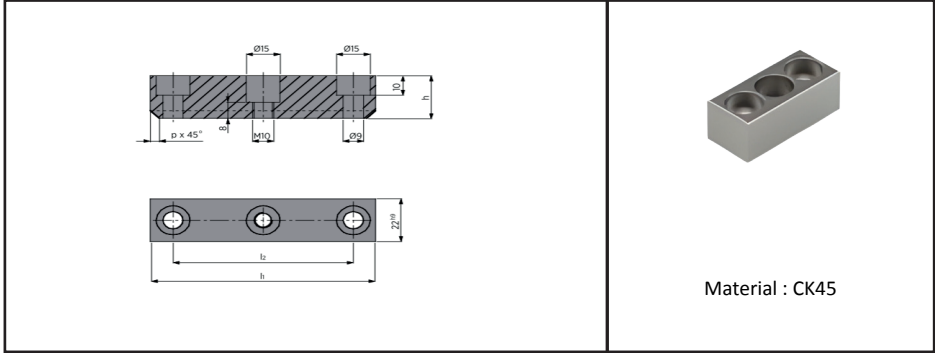


Kod-Code	b	h	l	M	k	Form
KMA03-082550	25	25	50	M8	25	E
KMA03-082575	25	25	75	M8	-	F
KMA03-102550	25	25	50	M10	25	E
KMA03-102575	25	25	75	M10	-	F
KMA03-083250	32	32	50	M8	25	E
KMA03-083275	32	32	75	M8	-	F
KMA03-103250	32	32	50	M10	25	E
KMA03-103275	32	32	75	M10	-	

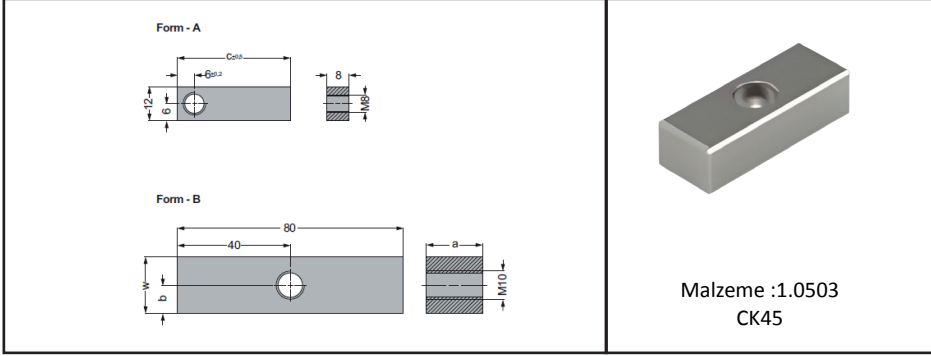


Kalip
Elemanları

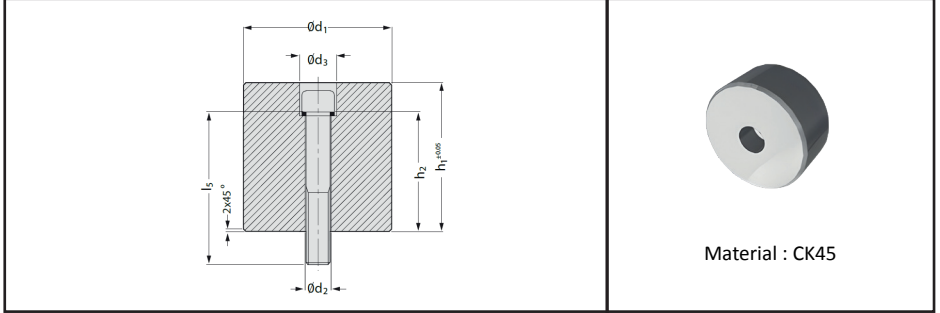
Kod-Code	a	l	k
KMA04-25080	25	80	40
KMA04-25125	25	125	62.5
KMA04-30080	30	80	40
KMA04-30125	30	125	62.5



Kod-Code	h	l1	l2	p
KMA05-14-50	14	50	32	-
KMA05-14-80	14	80	50	-
KMA05-14-100	14	100	80	-
KMA05-14-125	14	125	100	-
KMA05-22-50	22	50	32	4
KMA05-22-80	22	80	50	4
KMA05-22-100	22	100	80	4
KMA05-22-125	22	125	100	4
KMA05-40-50	40	50	32	4
KMA05-40-80	40	80	50	4
KMA05-40-100	40	100	80	4
KMA05-40-125	40	125	100	4



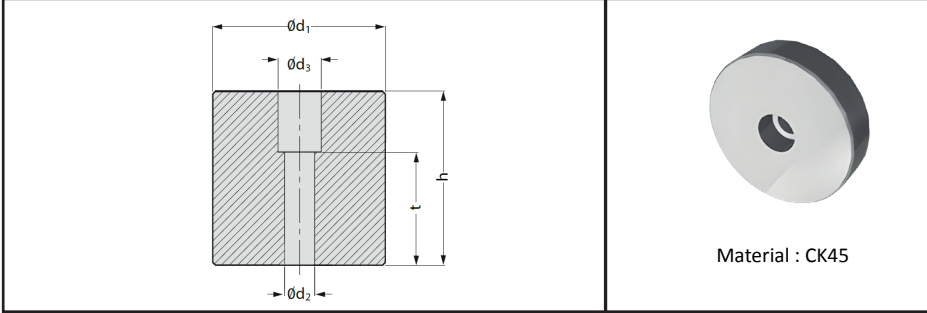
Kod-Code	Form	c	w	a	b
KMA-08-081216	A	16			
KMA-08-081218	A	18			
KMA-08-081220	A	20			
KMA-08-081222	A	22			
KMA-08-081226	A	26			
KMA-08-081232	A	32			
KMA-08-081235	A	35			
KMA-08-081240	A	40			
KMA-08-202080	B		20	20	10
KMA-08-221480	B		22	14	7
KMA-08-303080	B		30	30	15



Material : CK45

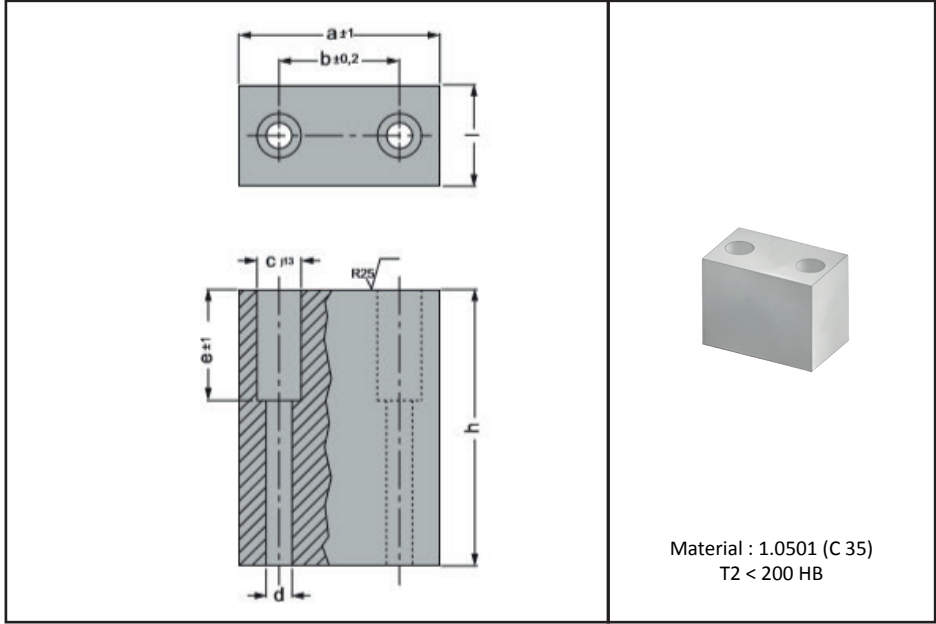
Kod-Code	d1	h1	d2	d3	Civata-Bolt
SSB01-60-h1?	60	40∞160	14	20	M12
SSB01-80-h1?	80	40∞160	14	20	M12
SSB01-100-h1?	100	40∞160	18	26	M16
SSB01-120-h1?	120	40∞160	22	33	M20
SSB01-150-h1?	150	40∞160	22	33	M20

M12			M16		M20	
h1	h2	l5	h2	l5	h2	l5
20∞40	12	30	12	30	12	30
40∞60	22	40	22	40	22	40
60∞80	42	60	42	60	42	60
80∞100	62	80	62	80	62	80
100∞120	82	100	82	100	82	100
120∞140	102	120	102	120	102	120
140∞160	122	140	122	140	122	140

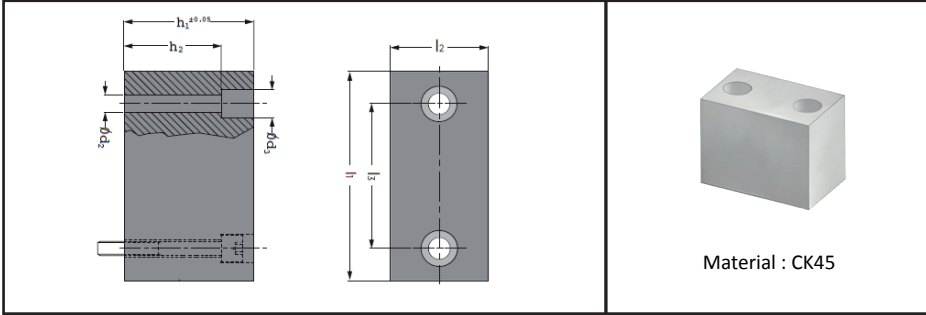


Kod-Code	d1	h	d2	d3	Civata-Bolt
SSB02-30-h?	30	20∞160	9	15	M8
SSB02-40-h?	40	20∞160	11	18	M10
SSB02-50-h?	50	20∞160	13.5	20	M12
SSB02-60-h?	60	20∞160	13.5	20	M12
SSB02-70-h?	70	20∞160	13.5	20	M12
SSB02-80-h?	80	20∞160	13.5	20	M12
SSB02-90-h?	90	20∞160	13.5	20	M12
SSB02-100-h?	100	20∞160	17.5	26	M16
SSB02-120-h?	120	20∞160	17.5	26	M16
SSB02-130-h?	130	20∞160	22	33	M20
SSB02-140-h?	140	20∞160	22	33	M20
SSB02-150-h?	150	40∞160	22	33	M20
SSB02-160-h?	160	40∞160	22	33	M20

	M8	M10	M12	M16	M20
h	t	t	t	t	t
20∞40	10	9	7	-	-
40∞60	28	25	22	20	18
60∞80	48	45	42	40	30
80∞100	68	65	62	60	50
100∞120	68	85	82	80	70
120∞140	68	105	102	100	90
140∞160	68	105	122	120	110



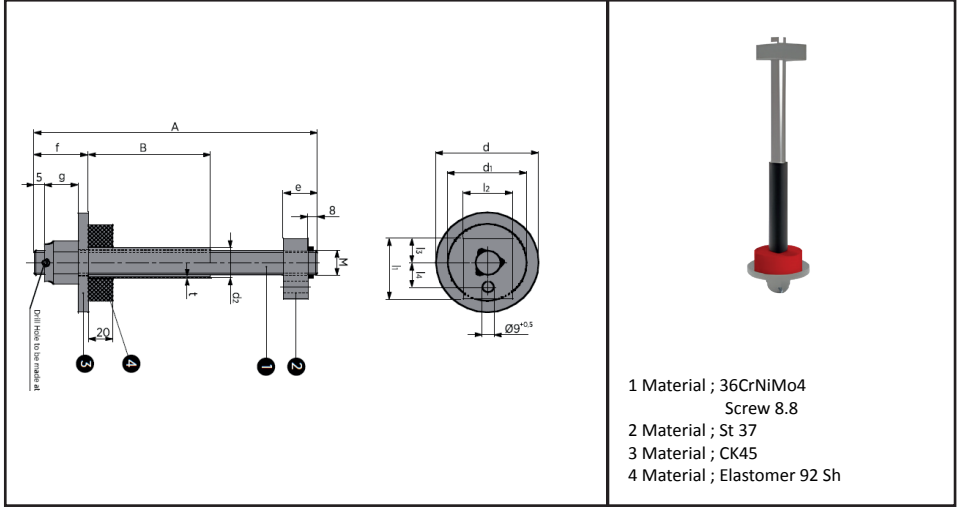
Kod-Code	h	a	l	b	c	d	e
DSB01-55080	55	80	30	55	18	9	20
DSB01-55110	55	110	40	80	22	14	20
DSB01-101080	101	80	35	55	18	9	57
DSB01-137100	137	100	50	60	22	13	55
DSB01-138100	138	100	40	55	22	14	43
DSB01-138120	138	120	60	80	22	14	43



Kod-Code	l1	l2	l3	Screw	b2	d1	max load
DSB02-01XXX	60	40	40	M8	9	15	50
DSB02-02XXX	80	40	56	M10	11	18	65
DSB02-03XXX	100	40	71	M12	14	20	85
DSB02-04XXX	100	50	76	M12	14	20	110
DSB02-05XXX	120	60	93	M12	14	20	160
DSB02-06XXX	150	80	120	M16	18	26	270

	M8	M10	M12	M16
h1	h2	h2	h2	h2
≥ 20-40	10	8	6	-
≥ 40-60	28	25	22	18
≥ 60-80	48	45	42	38
≥ 80-100	68	65	62	58
≥ 100-120	68	85	82	78
≥ 120-140	68	105	102	98
≥ 140-160	68	105	122	118

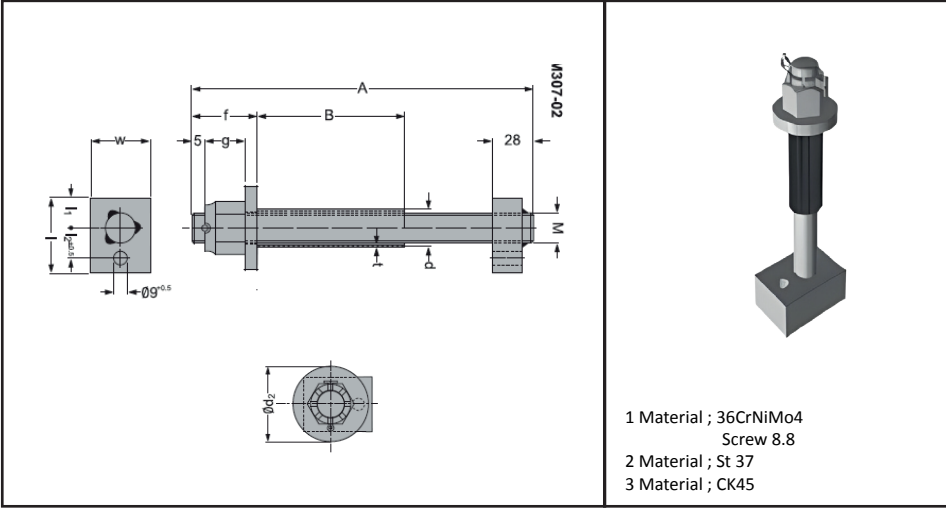
Order Example:
DSB02 - 03 - l1, l2 + h1
l1=100, l2=40 and h1 =080
Order Code: DSB02-03-100.40.80



Kod-Code	M	d	d1	d2	e	f	g	l1	l2	l3	l4± 0,5	t	Max. Load (Kg)
FR01-16AAABBB	M16	65	50	22	28	30	19	50	35	20	20	2	250
FR01-20AAABBB	M20	82	63	25	28	35	22	50	40	20	20	2	450
FR01-24AAABBB	M24	105	80	30	38	42	27	50	45	20	20	2,5	750
FR01-30AAABBB	M30	130	100	38	33	50	33	63	50	28	26	2,5	1250

A ve B müşteri tarafından verilir.
A and B is given by the customer.

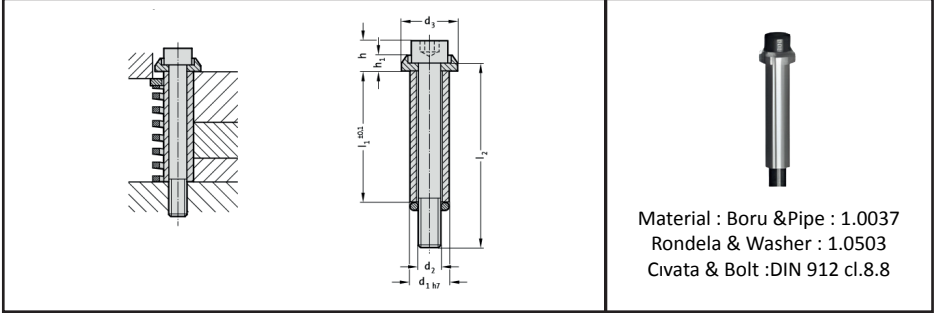
Order Example : M=20, A= 247 and B=110
Order Code : FR01-20-247110



Kod-Code	M	d	d2	f	g	l	w	l1	l2	Max Load (Kg)
FR02-16AAABBB	M16	22	40	30	19	50	35	20	20	1000
FR02-20AAABBB	M20	25	44	35	22	50	40	20	20	1400

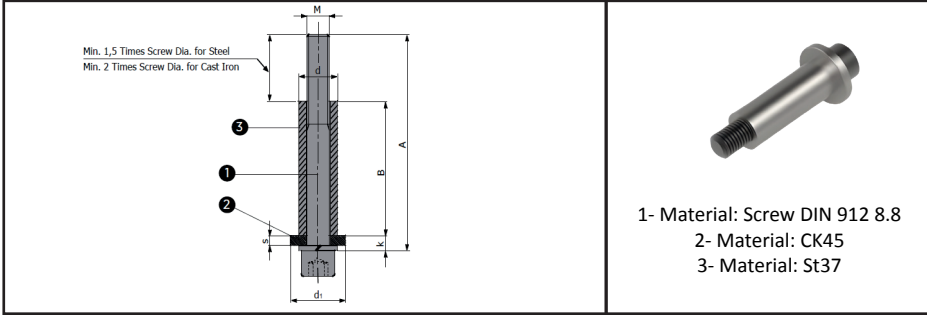
A ve B müşteri tarafından verilir.
A and B is given by the customer.

Order Example : M=20, A= 247 and B=110
Order Kodu : FR02-20-247110

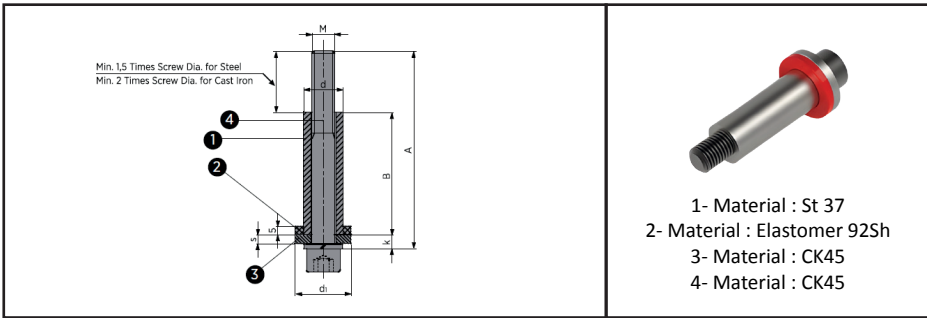


Material : Boru &Pipe : 1.0037
Rondela & Washer : 1.0503
Civata & Bolt :DIN 912 cl.8.8

d1	Ø10		Ø12,5		Ø15		Ø17,5		Ø23		
d2	M6		M8		M10		M12		M16		
d3	10		19		23		27		34		
h	10		13		15		18		24		
h1	l1	5,5	l2	6,5	l2	7,5	l2	9	l2	11	l2
20	☺	35	☺	35							
25	☺	40	☺								
30	☺	45	☺	45	☺	50	☺	50			
35	☺	50	☺	50	☺	55					
40	☺	55	☺	55	☺	60	☺	60			
45	☺	60	☺	60	☺	65	☺	65			
50	☺	65	☺	65	☺	70	☺	70	☺	80	
55	☺	70	☺	70	☺	75	☺	80			
60	☺	80	☺	80	☺	80	☺	90	☺	90	
70	☺	90	☺	90	☺	90	☺	100	☺	100	
80	☺	100	☺	100	☺	100	☺	110	☺	110	
90	☺	110	☺	110	☺	110	☺	120	☺	120	
100			☺	120	☺	120	☺	130	☺	130	
110							☺	140	☺	140	
120					☺	140	☺	150	☺	150	
130							☺	180	☺	180	
140									☺	180	
150									☺	200	
Tightening Torque Nm	13		32		65		120		290		

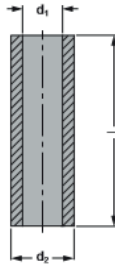


Kod-Code	d	d1	k	M	s	Max Load (kg)
BAC02-10AAABBB	16x2,5	32	6,5	M10	4	100
BAC02-12AAABBB	20x3,5	36	8,5	M12	6	150
BAC02-16AAABBB	28x5,5	45	9,5	M16	6	250

BAC03
BORULU ASKI CİVATALARI


Kod-Code	d	d1	k	M	s	Max Load (kg)
BAC03-10AAABBB	16x2,5	32	6,5	M10	4	100
BAC03-12AAABBB	20x3,5	36	8,5	M12	6	150
BAC03-16AAABBB	28x5,5	45	9,5	M16	6	250

- A ve B müşteri tarafından verilir.
- A and B is given by the customer.
- Order Example : BAC03-M=12, A= 110 ,B=76



Material : ST35,4

d	6,4	9	11	13	17	22	26	32
d1	10	13	16	20	25	30	36	42
Screw	M6	M8	M10	M12	M16	M20	M24	M30
l:0,5								
27	*							
30		*	*					
33	*		*	*				
38	*		*	*				
40		*	*					
44	*		*	*				
48	*		*	*	*			
50		*	*	*	*	*		
61	*		*	*	*			
63		*	*	*	*	*		
70					*	*		
72	*		*	*	*	*	*	
80	*	*	*	*	*	*	*	
90			*	*	*	*	*	
95					*			
100		*	*	*	*	*	*	
105					*			
115					*			

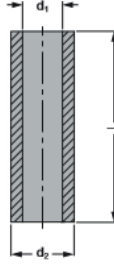
Tablonun Devamı Yan Sayfadadır.
The rest of the table is on the next page.

125		*	*	*	*	*	*	
135					*			
150		*	*	*	*	*	*	*
155					*			
175					*	*	*	
195					*			
200		*	*	*	*	*	*	*
215					*			
225					*	*	*	
235					*			
250					*	*	*	
255					*			

Farklı uzunluklar talep üzerine üretilir.

Different lengths on request.

Order Example: d1= 20, l= 80 Order Code: EB01-020080



Material : St35.4 Surface hard-
ened. HRC 56 ÷ 60

d	6,4	9	11	13	17	22	26	32
d1	10	13	16	20	25	30	36	42
Screw	M6	M8	M10	M12	M16	M20	M24	M30
l:0,5								
27	*							
30		*	*					
33	*		*	*				
38	*		*	*				
40		*	*					
44	*		*	*				
48	*		*	*	*			
50		*	*	*	*	*		
61	*		*	*	*			
63		*	*	*	*	*		
70					*	*		
72	*		*	*	*	*	*	
80	*	*	*	*	*	*	*	
90			*	*	*	*	*	
95					*			
100		*	*	*	*	*	*	
105					*			
115					*			

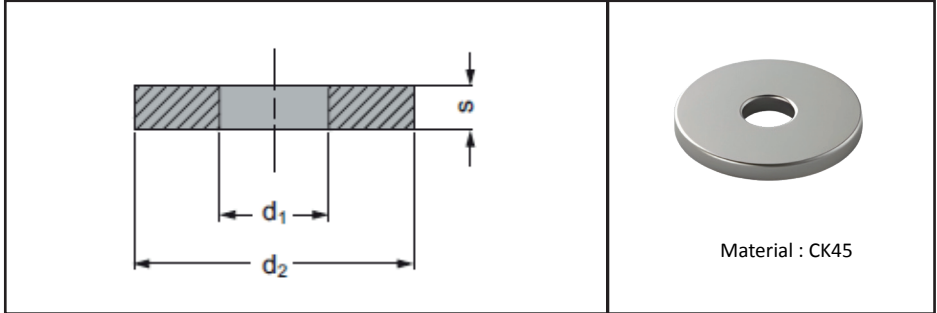
Tablonun Devamı Yan Sayfadadır.
The rest of the table is on the next page.

125		*	*	*	*	*	*	
135					*			
150		*	*	*	*	*	*	*
155					*			
175					*	*	*	
195					*			
200		*	*	*	*	*	*	*
215					*			
225					*	*	*	
235					*			
250					*	*	*	
255					*			

Farklı uzunluklar talep üzerine üretilir.

Different lengths on request.

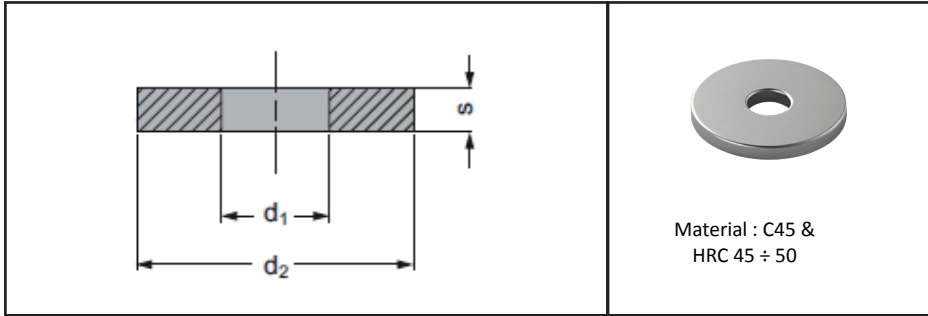
Order Example: d1= 20, l= 80 Order Code: EB02-020080



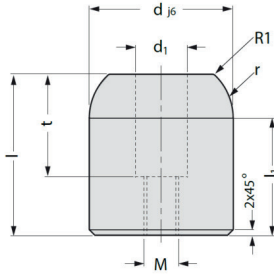
Kod-Code	d2	d1	s
RP01-001	20	8,5	4
RP01-002	25	10,5	5
RP01-003	25	13,5	5
RP01-004	30	13,2	5
RP01-005	30	13,5	5
RP01-006	32	12,5	5
RP01-007	32	12,5	5
RP01-008	32	13	5
RP01-009	32	13,5	6
RP01-010	36	10,5	5
RP01-011	36	13,5	5
RP01-012	36	16,5	5
RP01-013	36	20,5	5
RP01-014	38	17	6
RP01-015	40	13,5	5
RP01-016	45	20,5	5
RP01-017	55	21	8
RP01-018	55	10,5	5
RP01-019	55	13,5	5
RP01-020	55	20,5	5
RP01-021	55	25	10
RP01-022	55	25,5	5
RP01-023	55	30,5	5

Tablonun Devamı Yan Sayfadadır.
The rest of the table is on the next page.

Kod-Code	d2	d1	s
RP01-024	60	12,5	5
RP01-025	60	16,5	5
RP01-026	75	12,5	5
RP01-027	75	16,5	5
RP01-028	90	16,5	5
RP01-029	90	21	5
RP01-030	120	21	5

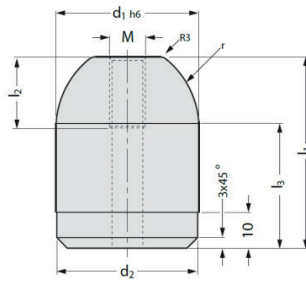
 RP02
 RONDELA
 Washer


Kod-Code	d2	d1	s
RP02-001	17	6,4	3
RP02-002	23	8,4	4
RP02-003	26	10,5	4
RP02-004	30	13	5
RP02-005	35	17	4
RP02-006	35	17	5
RP02-007	35	17	6
RP02-008	42	21	8
RP02-009	46	21	6
RP02-010	46	25	10
RP02-011	55	25	10



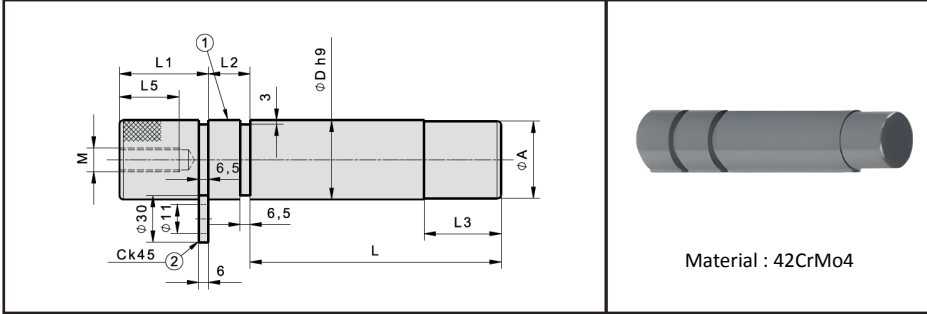
Material : 16MnCr5 Hard-
ened HRC 58 ÷ 60

Kod-Code	d	l	l1	d1	t	M	r
MRP01-2245	22	45	37.5	14	25	M10	20
MRP01-3250	32	50	40	18	35	M12	20
MRP01-4055	40	55	40	18	35	M12	20
MRP01-5055	50	55	40	18	35	M12	20



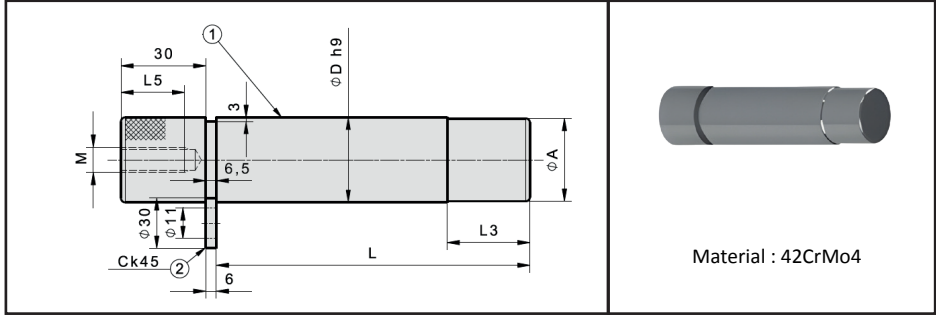
Material : 16MnCr5 Hardened
HRC 58 ÷ 60

Kod-Code	d1	l1	l2	l3	d2	M	r
MRP02-2245	22	45	16	35	21.95	M8	15
MRP02-2255	22	55	16	45	21.95	M8	15
MRP02-3250	32	50	20	35	31.95	M10	20
MRP02-4055	40	55	20	35	39.95	M10	25
MRP02-4065	40	65	20	45	39.95	M10	25
MRP02-5055	50	55	20	35	49.95	M10	25
MRP02-5680	56	80	20	60	55.95	M10	30



Kalip
Elemanları

Kod-Code	D	L	A	L1	L2	L3	L5	M
AB03-25-81	25	81	23	22	20	19	15	M8
AB03-25-98	25	98	23	22	20	19	15	M8
AB03-32-103	32	103	30	22	25	26	15	M8
AB03-32-148	32	148	30	22	25	26	15	M8
AB03-40-132	40	132	38	32	32	33	20	M10
AB03-40-192	40	192	38	32	32	33	20	M10
AB03-50-165	50	165	40	32	40	41	20	M10
AB03-50-220	50	220	40	32	40	41	20	M10
AB03-63-210	63	210	61	32	50	51	25	M12
AB03-63-250	63	250	61	32	50	51	25	M12



Kod-Code	D	L	A	L3	L5	M
AB04-20-81	20	81	18	19	15	M8
AB04-25-81	25	81	23	19	15	M8
AB04-25-98	25	98	23	19	15	M8
AB04-32103	32	103	30	26	15	M8
AB04-32148	32	148	30	26	15	M8
AB04-40132	40	132	38	33	20	M10
AB04-40192	40	192	38	33	20	M10
AB04-50165	50	165	48	41	20	M10
AB04-50220	50	220	48	41	20	M10
AB04-63210	63	210	61	51	25	M12
AB04-63250	63	250	61	51	25	M12
AB04-80210	80	210	78	51	25	M12



2002
Kuruluş - Sıncı

100*

Genesis Kalıp Aparat Mühendislik San. ve Tic. Ltd. Şti



www.gnskalip.com



Üçevler Küçük Sanayi
Sitesi 21.Sk. 34.Blok
No:71 16130 Nilüfer
BURSA / TÜRKİYE



+90 0533 435 44 52
info@gnskalip.com



GNS
KALIP STANDARTLARI