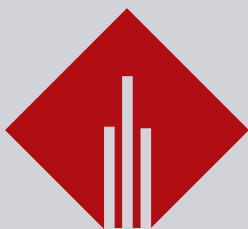


# STANDART KALIP ELEMENLARI

Standard Die Components



# GNS

KALIP STANDARTLARI

## Önsöz

2002 yılından başlayarak günümüze kadar varlığını sürdüren; “Başarınız Başarımızdır” ilkesini benimseyen firmamız siz müşterilerimize bu çalışmamızla bir kez daha merhaba demenin haklı sevincini yaşıyoruz.

Firmamız otomotiv yan sanayi, makine imalat sektörü ve bir bütün olarak kalıp üretim sektörüne hizmet sunmaktadır. Standart kalıp elamanları temel ürün portföyümüzdür.

Hizmet tedarikinin her safhasında üretimden satışa müşterilerimizin güvenine layık olmak, taleplerini eksiksiz ve isabetli bir şekilde zamanında karşılayarak sektörün öncü ve rekabetçi firmalarından olmayı hedef aldık.

2011 yılında ISO 9001:2008 Kalite belgesini alan ve ISO 9001-2015 ile devamlılığını sağlayan, müşteri istek ve beklentilerini üretim safhası ve satış sonrası önemseyen firmamız ürün yelpazesini sürekli yenileyerek oluşturduğumuz teknik bilgi ve donanımızı katalog çalışmamızla somutlaştırarak siz değerli müşterilerimizle paylaşmak istedik.

Kaliteli, çözüm odaklı, tecrübeli, geniş stok yelpazemizle iyi bir çözüm ortağı olduğumuzu gururla ifade ediyoruz.

Saygılarımızla  
GENESIS KALIP APARAT MÜHENDİSLİK  
SAN. VE TİC. LTD. ŞTİ.

## KALIP VE İŞ PARÇASI BAĞLAMA ELAMANLARI

### Mold and Workpiece Clamping Components



Sayfa 10

**GMA501**  
BLOK YANDAN BAĞLAMA  
Block Side Press



Sayfa 10

**GMU501**  
BLOK YANDAN BAĞLAMA  
Block Side Press



Sayfa 17

**P1870**  
PUL  
Washer



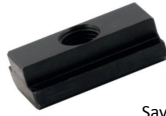
Sayfa 28

**MP1290**  
MERDİVEN DIŞ BAĞLAMA PABUCU  
Serrated Thread Clamp



Sayfa 11

**TP1750**  
T-PABUÇ  
T-Nut



Sayfa 13

**UP1710**  
UZUN T-PABUÇ  
Long T-Nut



Sayfa 14

**TS1790**  
TAKVİYELİ SOMUN  
Hexagon Nut



Sayfa 16

**PS1810**  
PULLU SOMUN  
Nut with Washer



Sayfa 15

**US1830**  
UZATMA SOMUN  
Extension Nut



Sayfa 27

**DP1330**  
DESTEK DELİKLİ DÜZ PABUÇ  
Straight Clamp with Support Hole  
Washer



Sayfa 29

**PP1387**  
PLAKA BAĞLAMA PABUCU  
Plate Sliding Clamp



Sayfa 23

**SAS1610**  
SOMUNLU PULLU T-AYAKLI  
SAPLAMA  
T-Slot Bolt with Nut and Washer



Sayfa 20

**TAS1590**  
T-AYAKLI SAPLAMA  
T-Slot Bolt



Sayfa 18

**DS1690**  
DÜZ SAPLAMA  
Straight Stud



Sayfa 26

**KAS1630**  
KOMBİNE T-AYAKLI SAPLAMA  
Combined T-Slot Bolt



Sayfa 30

**PC1490**  
PABUÇ DESTEK CIVATASI  
Clamp Support Bolt



Sayfa 29

**MD1310**  
MERDİVEN DIŞ DESTEK  
Serrated Thread Support



Sayfa 31

**TD1510**  
TRAPEZ DIŞ YÜKSELTİCİ DESTEK  
Trapeze Thread Lifter Support



Sayfa 32

**BS1990**  
VİDALI YÜKSELTİCİ BAĞLAMA SET  
Screwed Coupling Set With Lifter



Sayfa 33

**BS2010**  
MERDİVEN YÜKSELTİCİ BAĞLAMA  
SET Coupling Set With Serrated V

## TAŞIMA VE KALDIRMA ELAMANLARI Carrying And Lifting Elements



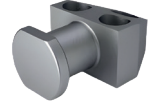
Sayfa 36



Sayfa 37



Sayfa 38



Sayfa 39

TB01  
TAŞIMA BRAKETLERİ  
VDI 336639D 876 VW/AUDI  
Lifting Brackets

TB02  
TAŞIMA BRAKETLER- VDI 3366  
Lifting Brackets

TB03  
EMNİYET PLAKALI TAŞIMA  
BRAKETLERİ - B2 5602 BMW  
Lifting Brackets

TB04  
TAŞIMA BRAKETLERİ  
Lifting Brackets



Sayfa 40



Sayfa 41



Sayfa 41



Sayfa 42

TB11  
TAŞIMA BRAKETLERİ – BMW  
Lifting Brackets

TB12  
TAŞIMA BRAKETLERİ FIAT  
Lifting Brackets

TB12  
TAŞIMA BRAKETLERİ FIAT  
Lifting Brackets

TB13  
TAŞIMA BRAKETLERİ CNOMO  
EM24.50.400  
Lifting Brackets



Sayfa 43



Sayfa 44



Sayfa 45



Sayfa 46

TP02  
TAŞIMA MİLLERİ FIAT STQ.  
40002  
Lifting Pins

TP03  
TAŞIMA MİLLERİ FORD  
WDX22-60M  
Lifting Pins

TP05  
TAŞIMA MİLLERİ CNOMO  
EM24.50.400PSA E24.59.950.G  
Lifting Pins

TP06  
TAŞIMA MİLLERİ OPEL 90.15.00  
Lifting Pins



Sayfa 47



Sayfa 48



Sayfa 49



Sayfa 50

TP10  
TAŞIMA MİLLERİ  
VDI 3366VW  
Lifting Pins

TP11  
TAŞIMA MİLLERİ  
BMW B2 5605 12  
Lifting Pins

TP12  
TAŞIMA MİLLERİ  
Lifting Pins

TM801  
TAŞIMA MİLLERİ İÇİN BURÇLAR  
Bush for Lifting Pins

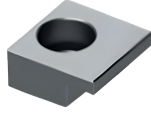


## KILAVUZLAMA ELAMANLARI

### Guide Elements



Sayfa 52



Sayfa 53



Sayfa 54



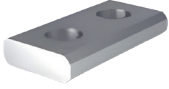
Sayfa 55

BTF01  
BURÇ TUTUCU FLANŞ-CNOMO  
E24.52.100  
Toe Clamp for Bush Self-lubricating

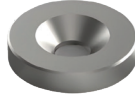
BTF02  
KOLON BURÇ TUTUCU  
Toe Clamp

KTF01  
KOLON TUTUCU FLANŞ-PSA  
E24.52.105.G / CNOMOE24.52.100  
Guide Post Retainers

KTS01  
KOLON SEĞMANLARI  
Guide Posts Retainer Rings



Sayfa 55



Sayfa 56



Sayfa 56



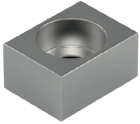
Sayfa 57

KKP01  
KOLON KİLITLEME PLAKASI  
Guide Locking Plate

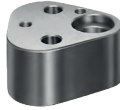
KMF01  
KOLON MONTAJ FLANŞI  
Retaining Disc

BKSF01  
BİLYALI KAFES STOPLAMA FLANŞI  
Ball Cage Stop Flange

GDP01  
GERİ DÖNÜŞ PALAKALARI  
Positive Return Clamp for V  
Drivers



Sayfa 57



Sayfa 58



Sayfa 58

KMA07  
MATRİS TUTUCU KAMA VW/AUDI  
39V 1304FORD WDX 05-70M  
Key

HPR01  
ZIMBA TUTUCULARI  
Headed Punch Retainers

HPR02  
ZIMBA TUTUCUARI  
Headed Punch Retainers

HPR03  
ZIMBA TUTUCUARI AYAR VE  
DESTEK PLAKALARI  
Shim Plates/Backing Plates

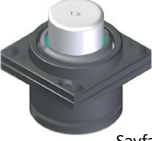


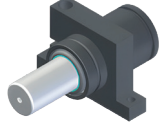
Sayfa 59

## KALIP ELAMANLARI Die Components

				
Sayfa 62	Sayfa 63	Sayfa 63	Sayfa 64	Sayfa 65
AP01 BASKI PİMİ - VW/AUDI 39D 638 Air Pin	KMA01 KAMA PSA E24.56.630G Key	KMA02 KAMA PSA E24.56.630G Key	KMA03 KAMA PSA E24.56.630G Key	KMA04 KAMA Key
				
Sayfa 66	Sayfa 67	Sayfa 68	Sayfa 69	Sayfa 70
KMA05 KAMA VW/AUDI 39V 1304 Key	KMA08 KAMA BMW 3765 1Form- A BMW 3701 20 Form - B	SSB01 SİLİNDİR STOPLAMA BLOĞU Cylindrical Stop Block	SSB02 SİLİNDİR STOPLAMA BLOĞU Cylindrical Stop Block	DSB01 Dikdörtgen Stoplama Bloğu PSA E24.51.920.G Rectangular Stop Block
				
Sayfa 71	Sayfa 72	Sayfa 73	Sayfa 74	Sayfa 75
DSB02 Dikdörtgen Stoper	FR01 GÜVENLİK CİVATALARI Safety Bolts	FR02 GÜVENLİK CİVATALARI Safety Bolts	BAC01 BORULU ASKI CİVATALARI Retainer Bolt Sets	BAC02 BORULU ASKI CİVATALARI Retainer Bolt Sets
				
Sayfa 75	Sayfa 76	Sayfa 78	Sayfa 80	Sayfa 81
BAC03 BORULU ASKI CİVATALARI Retainer Bolt Sets	EB01 EMNİYET AMAÇLI BORULAR Spacer Tubes	EB02 EMNİYET AMAÇLI BORULAR Spacer Tubes	RP01 RONDELA Washer	RP02 RONDELA Washer
				
Sayfa 82	Sayfa 82	Sayfa 83	Sayfa 84	
MRP01 MERKEZLEME PİMİ Locating Pins	MRP02 MERKEZLEME PİMİ Locating Pins	AB03 EMNİYET PİMİ PSA E24.55.265G Pad Retainer Pins	AB04 EMNİYET PİMİ PSA E24.55.265G Pad Retainer Pins	

## GAZLI YAY ELEMANLARI

### Gas Springs Retaining Flange

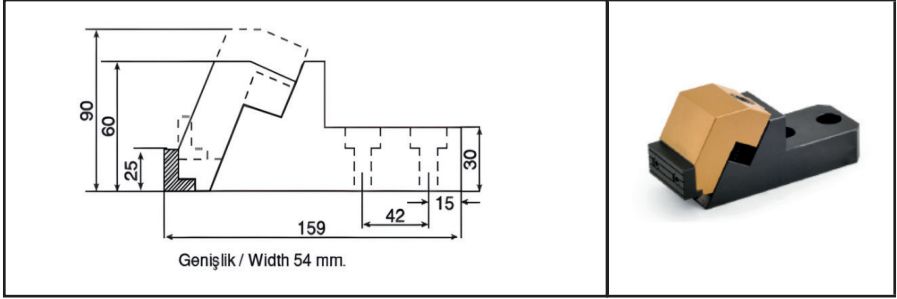
 <p>Sayfa 86</p>	 <p>Sayfa 87</p>	 <p>Sayfa 88</p>	 <p>Sayfa 89</p>	 <p>Sayfa 90</p>
GYT57 GAZLI YAY TUTUCU Gas Springs Retaining Flange	GYT55 GAZLI YAY TUTUCU Gas Springs Retaining Flange	GYT22 GAZLI YAY TUTUCU Gas Springs Retaining Flange	GYT23 GAZLI YAY TUTUCU Gas Springs Retaining Flange	GYT54 GAZLI YAY TUTUCU Gas Springs Retaining Flange
 <p>Sayfa 91</p>	 <p>Sayfa 92</p>	 <p>Sayfa 93</p>		
GYT24 GAZLI YAY TUTUCU Gas Springs Retaining Flange	GYT25 GAZLI YAY TUTUCU Gas Springs Retaining Flange	GYEP01 GAZLI YAY ŞOK PLAKASI Gas Springs Counter-Plate		


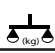
# BÖLÜM 1

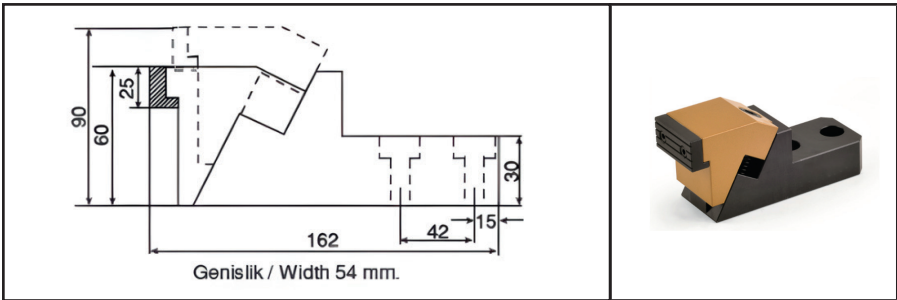




## KALIP VE İŞ PARÇASI BAĞLAMA ELAMANLARI Mold and Workpiece Clamping Components

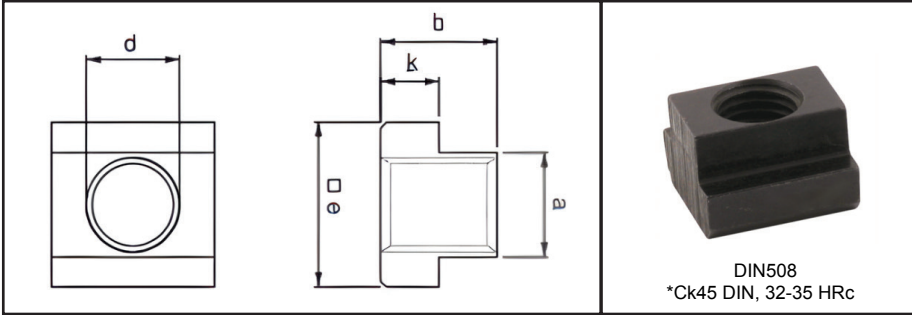
- GMAS01-GMUS01
- TP1750
- UP1710
- TS1790
- US1830
- PS1810
- P1870
- DS1690
- TAS1590
- SAS1610
- KAS1630
- DP1330
- MP1290
- PP1387
- MD1310
- PC1490
- TD1510
- BS1990
- BS2010
- Blok Yandan Bağlama
- T-Pabuç
- Uzun T-Pabuç
- Takviyeli Somun
- Uzatma Somun
- Pullu Somun
- Pul
- Düz Saplama
- T-Ayaklı Saplama
- Somunlu Pullu T-Ayaklı Saplama
- Kombine T-Ayaklı Saplama
- Destek Delikli Düz Pabuç
- Merdiven Dış Bağlama Pabucu
- Plaka Bağlama Pabucu
- Merdiven Dış Destek
- Pabuç Destek Civatası
- Trapez Dış Yükseltici Destek
- Vidalı Yükselticili Bağlama Set
- Merdiven Yükselticili Bağlama Set
- Block Side Press
- T-Nut
- Hong T-Nut
- Hexagon Nut
- Long T-Nut
- Nut with Washer
- Washer
- Straight Stud
- T-Slot Bolt
- T-Slot Bolt with Nut and Washer
- Combined T-Slot Bolt
- Straight Clamp with Support Hole
- Serrated Thread Clamp
- Plate Sliding Clamp
- Serrated Thread Support
- Clamp Support Bolt
- Trapeze Thread Lifter Support
- Screwed Coupling Set with Lifter
- Coupling Set with Serrated Hell Block


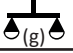


Kod - Code			Sıkma Kuvveti Clamping
GMAS-01-14	14	2,8	3000
GMAS-01-16	16	2,8	3000
GMAS-01-18	18	2,8	3000
GMAS-01-20	20	2,8	3000
GMAS-01-22	22	2,8	3000
GMAS-01-24	24	2,8	3000

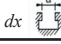



Kod - Code			Sıkma Kuvveti Clamping
GMUS-01-14	14	2,8	3000
GMUS-01-16	16	2,8	3000
GMUS-01-18	18	2,8	3000
GMUS-01-20	20	2,8	3000
GMUS-01-22	22	2,8	3000
GMAS-01-24	24	2,8	3000

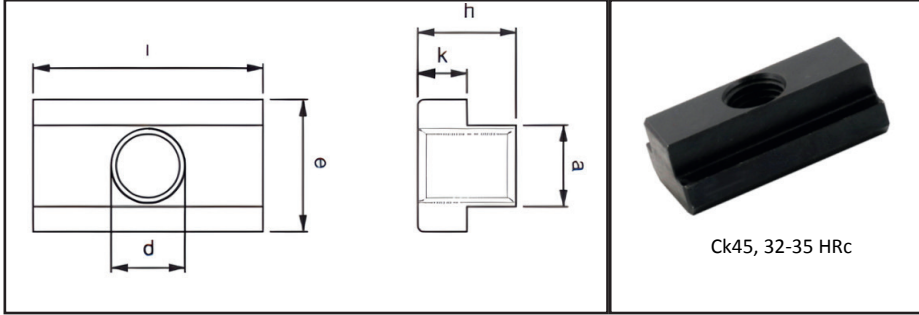




Kod - Code	$d \times$ 	a	e	h	k	 (g)
TP1750 -0506	M5x6	5.7	10	8	4	4
TP1750 -0608	M6x8	7.7	13	10	6	10
TP1750 -0810	M8x10	9.7	15	12	6	12
TP1750 -0812	M8x12*	11.7	18	14	7	22
TP1750 -0814	M8x14*	13.7	22	16	8	40
TP1750 -0816	M8x16*	15.7	25	18	9	60
TP1750 -0818	M8x18*	17.7	28	20	10	90
TP1750 -1012	M10x12	11.7	18	14	7	20
TP1750 -1014	M10x14*	13.7	22	16	8	37
TP1750 -1016	M10x16*	15.7	25	18	9	55
TP1750 -1018	M10x18*	17.7	28	20	10	87

Tablonun Devamı Yan Sayfadadır.  
The rest of the table is on the next page.

Kod - Code	 dx	a	e	h	k	 (g)
TP1750 -1214	M12x14	13.7	22	16	8	30
TP1750 -1216	M12x16*	15.7	25	18	9	55
TP1750 -1218	M12x18*	17.7	28	20	10	80
TP1750 -1416	M14x16	15.7	25	18	9	45
TP1750 -1418	M14x18*	17.7	28	20	10	75
TP1750 -1618	M16x18	17.7	28	20	10	65
TP1750 -1620	M16x20*	19.7	32	24	12	115
TP1750 -1622	M16x22*	21.7	35	28	14	170
TP1750 -1624	M16x24*	23.7	40	32	16	260
TP1750 -1628	M16x28*	27.7	44	36	18	375
TP1750 -1820	M18x20	19.7	32	24	12	105
TP1750-1822	M18x22*	21.7	35	28	14	160
TP1750-2022	M20x22	21.7	35	28	14	150
TP1750-2024	M20x24*	23.7	40	32	16	240
TP1750-2028	M20x28*	27.7	44	36	18	350
TP1750-2224	M22x24	23.7	40	32	16	220
TP1750-2228	M22x28*	27.7	44	36	18	330
TP1750-2428	M24x28	27.7	44	36	18	330
TP1750-2436	M24x36*	35.6	54	44	22	665
TP1750-3036	M30x36	35.6	54	44	22	585
TP1750-3642	M36x42	41,6	65	52	26	1025
TP1750-4248	M42x48	47,6	75	60	30	1600

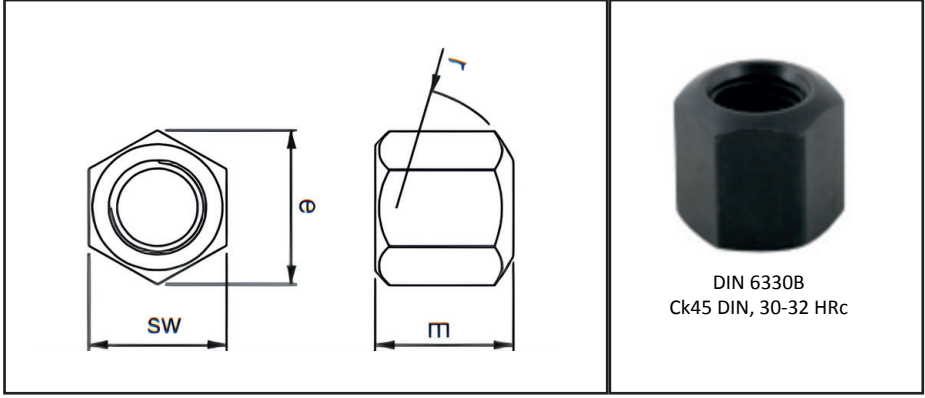
- -T –Pabucun mukavemeti için dişli kısmının tümüne vidalama yapılması gerekir.
- - Screwing must be done on the entire thread part for the endurance of T-Nut




Kod-Code	dx		a	e	L	h	k	 (g)
UP1710-0608	M6x8		7.7	13	26	10	6	14
UP1710-0810	M8x10		9.7	15	30	12	6	25
UP1710-1012	M10x12		11.7	18	36	14	7	49
UP1710-1214	M12x14		13.7	22	44	16	8	82
UP1710-1416	M14x16		15.7	25	50	18	9	120
UP1710-1618	M16x18		17.7	28	56	20	10	165
UP1710-1820	M18x20		19.7	32	64	24	12	260
UP1710-2022	M20x22		21.7	35	70	28	14	365
UP1710-2224	M22x24		23.7	40	80	32	16	535
UP1710-2428	M24x28		27.7	44	88	36	18	745
UP1710-3036	M30x36		35.6	54	108	44	22	1390

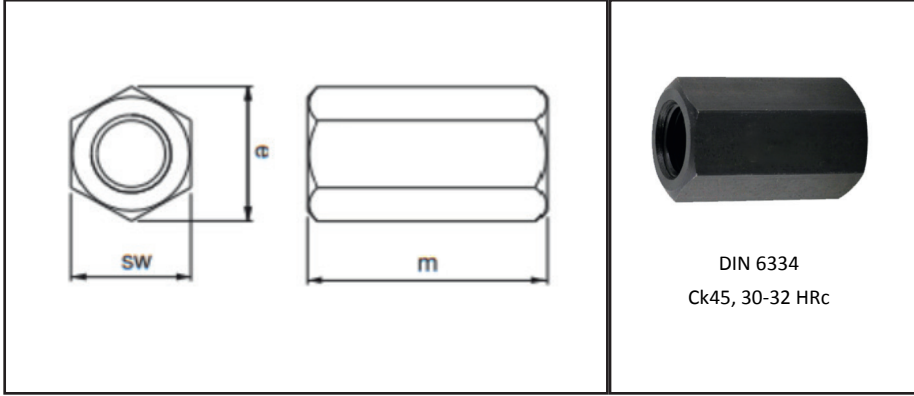
- T-Pabucun mukavemeti için dişli kısmının tümüne vidalama yapılması gerekir.
- Screwing must be done on the entire thread part for the endurance of T-Nut
- Hassas Makina Pleytlerinde "T" Kanalı Korur.
- This clamp protects T-Slot in sensitive machine plates






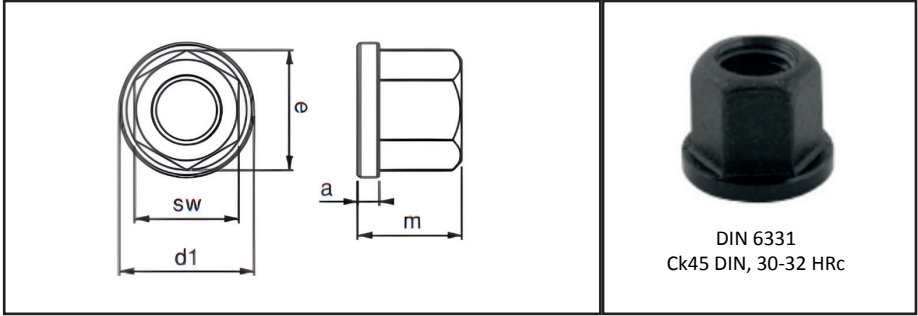
Kod-Code	Metrik	sw	e	m	r	 (g)
TS1790-06	M6	10	11.7	9	9	5
TS1790-08	M8	13	15	12	12	9
TS1790-10	M10	17	19.6	15	15	20
TS1790-12	M12	19	21.9	18	17	25
TS1790-14	M14	22	25.4	21	20	40
TS1790-16	M16	24	27.7	24	22	55
TS1790-18	M18	27	31.2	27	24	80
TS1790-20	M20	30	34.6	30	27	110
TS1790-22	M22	32	36.9	33	30	130
TS1790-24	M24	36	41.5	36	32	190
TS1790-30	M30	46	53.1	45	41	400
TS1790-36	M36	55	63.5	54	50	680
TS1790-42	M42	65	75	63	58	1150


- Düz yüzey DIN 6340 pul ile kullanılır.
- Flat surface is used with DIN 6340 Washer
- Radüslü yüzey DIN 6319D ve DIN 6319G pullar ile kullanılır.
- This nut is used with Rad-top surface DIN 6319D and DIN 6319G washers

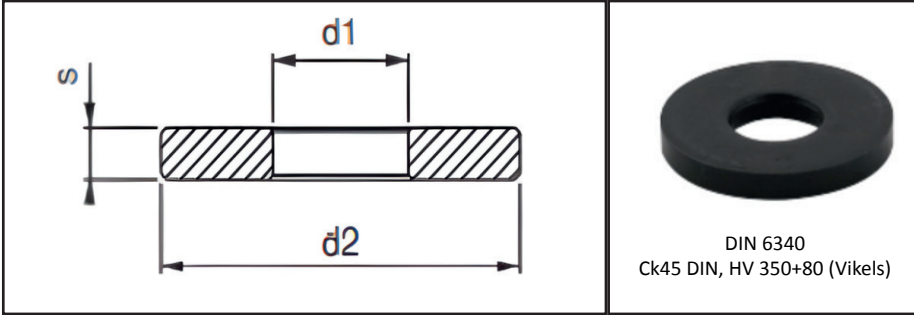



Kod-Code	Metrik	sw	e	m	 (g)
US1830-06	M6	10	11.7	18	8
US1830-08	M8	13	15	24	19
US1830-10	M10	17	19.6	30	40
US1830-12	M12	19	21.9	36	55
US1830-14	M14	22	25.4	42	90
US1830-16	M16	24	27.7	48	115
US1830-18	M18	27	31.2	54	165
US1830-20	M20	30	34.6	60	230
US1830-22	M22	32	36.9	66	245
US1830-24	M24	36	41.5	72	400
US1830-30	M30	46	53.1	90	840
US1830-36	M36	55	63.5	108	1430
US1830-42	M42	65	75	126	2330

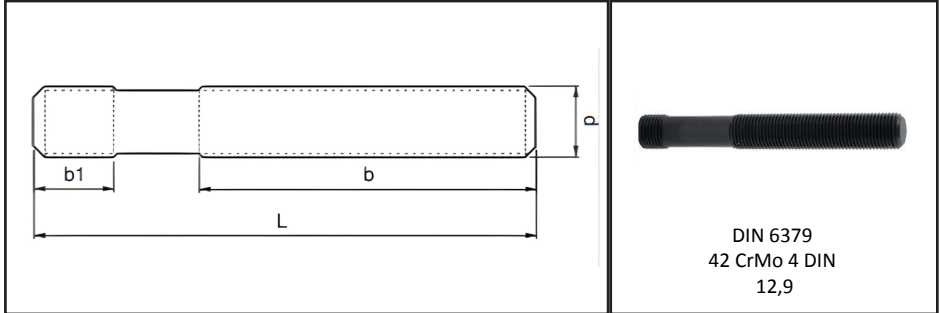
- -DIN 787 T-Ayaklı saplama ve DIN 6379 düz saplamlarda uzatma amaçlı kullanılır.
- -It is used in DIN 787 T-Studs and DIN 6379 Straight Studs as extension.



Kod-Code	Metrik	sw	e	m	a	d1	 (g)
PS1810-08	M8	13	14.7	12	3.5	18	12
PS1810-10	M10	17	19.2	15	4	22	25
PS1810-12	M12	19	21.5	18	4	25	30
PS1810-14	M14	22	24.9	21	4.5	28	50
PS1810-16	M16	24	27.2	24	5	31	65
PS1810-18	M18	27	30.6	27	5	34	90
PS1810-20	M20	30	34	30	6	37	130
PS1810-22	M22	32	36.3	33	6	40	155
PS1810-24	M24	36	40.8	36	6	45	220
PS1810-30	M30	46	52.3	45	8	58	465
PS1810-36	M36	55	62	54	10	68	500
PS1810-42	M42	65	75	63	12	80	1340



Kod-Code	Metrik	Withworth	d1	d2	s	 (g)
P1870-06	M6	1/4	6.4	17	3	6
P1870-08	M8	5/16	8.4	23	4	10
P1870-10	M10	3/8	10.5	28	4	16
P1870-12	M12	1/2	13	35	5	30
P1870-14	M14	-	15	40	5	40
P1870-16	M16	5/8	17	45	6	60
P1870-18	M18	-	19	45	6	60
P1870-20	M20	3/4	21	50	6	70
P1870-22	M22	7/8	23	50	8	90
P1870-24	M24	7/8	25	60	8	140
P1870-30	M30	11/8	31	68	10	215
P1870-36	M36	11/4	38	80	12	360
P1870-42	M42	11/2	44	98	15	640



DIN 6379  
42 CrMo 4 DIN  
12,9

Sıkma Verileri

Tightening Data  
Nm kN



Kod - Code	d	x	L	b1	b	Nm	kN	(g)
DS1690-08040	M8		x40	11	20	36	27	10
DS1690-08063			x63		40			15
DS1690-08080			x80		50			20
DS1690-08100			x100		63			30
DS1690-08125			x125		75			35
DS1690-08160			x160		100			45
DS1690-10050	M10		x50	13	25	67	43	20
DS1690-10063			x63		32			25
DS1690-10080			x80		50			35
DS1690-10100			x100		63			45
DS1690-10125			x125		75			55
DS1690-10160			x160		100			70
DS1690-10200	x200	125	95					
DS1690-12050	M12		x50	15	25	120	63	35
DS1690-12063			x63		32			40
DS1690-12080			x80		50			55
DS1690-12100			x100		63			70
DS1690-12125			x125		75			90
DS1690-12160			x160		100			115
DS1690-12200	x200	125	140					
DS1690-14063	M14		x63	17	32	191	86	60
DS1690-14080			x80		50			75
DS1690-14100			x100		63			95
DS1690-14125			x125		75			120
DS1690-14160			x160		100			150
DS1690-14200			x200		125			195
DS1690-14250	x250	160	240					
DS1690-16063	M16		x63	19	32	302	118	85
DS1690-16080			x80		50			105
DS1690-16100			x100		63			130
DS1690-16125			x125		75			160
DS1690-16160			x160		100			205
DS1690-16200			x200		125			260
DS1690-16250	x250	160	325					
DS1690-16315	x315	180	405					
DS1690-16500	x500	315	650					

Tablonun Devamı Yan Sayfadadır.

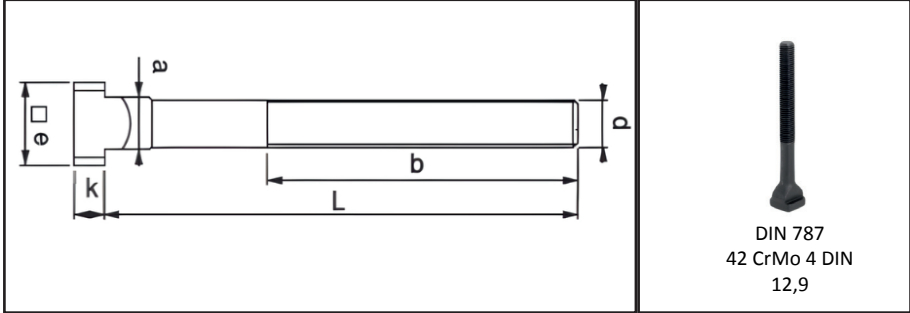
The rest of the table is on the next page.

Sıkma Verileri  
Tightening Data  
Nm KN 

Kalıp İş Parçası  
Bağlantı  
Elemanları

Kod - Code	d	x	L	b1	b	Nm	KN	(g)
DS1690-18080	M18		x80	23	50	405	144	130
DS1690-18100			x100		60			160
DS1690-18125			x125		75			200
DS1690-18160			x160		100			260
DS1690-18200			x200		125			320
DS1690-18250			x250		150			400
DS1690-18315			x315		180			510
DS1690-20080	M20		x80	27	32	580	184	155
DS1690-20100			x100		60			200
DS1690-20125			x125		70			250
DS1690-20160			x160		100			330
DS1690-20200			x200		125			400
DS1690-20250			x250		160			510
DS1690-20315			x315		200			640
DS1690-20400			x400		250			815
DS1690-20500			x500		315			1020
DS1690-22100	M22		x100	31	45	772	228	250
DS1690-22125			x125		70			305
DS1690-22160			x160		100			400
DS1690-22200			x200		125			500
DS1690-22250			x250		160			620
DS1690-22315			x315		180			780
DS1690-22400			x400		250			1010
DS1690-24100	M24		x100	35	45	994	265	290
DS1690-24125			x125		70			365
DS1690-24160			x160		100			470
DS1690-24200			x200		125			580
DS1690-24250			x250		160			730
DS1690-24315			x315		200			920
DS1690-24400			x400		250			1170
DS1690-24500			x500		315			1470
DS1690-24630			x630		315			1860
DS1690-30125	M30		x125	43	56	1930	421	570
DS1690-30200			x200		125			910
DS1690-30250			x250		160			1150
DS1690-30315			x315		200			1435
DS1690-30500			x500		315			2315
DS1690-30700			x700		400			3215
DS1690-301000			x1000		400			4700
DS1690-36160			M36					x160
DS1690-36200	x200	125		1340				
DS1690-36250	x250	160		1710				
DS1690-36315	x315	200		2150				
DS1690-36400	x400	250		2700				
DS1690-36500	x500	315		3450				
DS1690-36700	x700	400		4750				
DS1690-42315	M42			x315		59	200	5415
DS1690-42400			x400	250	3750			
DS1690-42500			x500	315	4690			

- Not:150 °C üzerindeki ortamlarda sıkma işlemi yapılırken dişlerin üzerine Loctite 8150 kullanılır.
- Note: Environments on the 150 °C when clamping action on the thread Loctite 8150 is used.



Kod - Code	dx	xL	b	a	e	k	Sıkma Verileri Tightening Data		g
							Nm	kN	
TAS1590-0606025	M6x6	x25	15	5.7	10	4	17	17	8
TAS1590-0606025		x40	28						11
TAS1590-0606025		x63	40						15
TAS1590-0808032	M8x8	x32	22	7.7	12	6	43	32	13
TAS1590-0808050		x50	35						16
TAS1590-0808080		x80	50						20
TAS1590-1010040	M10x10	x40	23	9.7	15	6	79	51	35
TAS1590-1010063		x63	45						45
TAS1590-1010080		x80	50						60
TAS1590-1010100		x100	60						70
TAS1590-1012050	M10x12	x50	35	11.7	18	7	79	51	50
TAS1590-1012063		x63	40						60
TAS1590-1012080		x80	55						65
TAS1590-1012100		x100	60						75
TAS1590-1012125		x125	75						90
TAS1590-1012160		x160	90						105
TAS1590-1012200		x200	120						120
TAS1590-1212050	M12x12	x50	35	11.7	18	7	141	74	65
TAS1590-1212063		x63	40						70
TAS1590-1212080		x80	55						80
TAS1590-1212100		x100	65						100
TAS1590-1212125		x125	75						110
TAS1590-1212160		x160	100						140
TAS1590-1212200		x200	120						160
TAS1590-1214050	M12x14	x50	35	13.7	22	8	141	74	80
TAS1590-1214063		x63	45						90
TAS1590-1214080		x80	55						100
TAS1590-1214100		x100	65						110
TAS1590-1214125		x125	75						135
TAS1590-1214160		x160	100						160
TAS1590-1214200		x200	120						180

Tablonun Devamı Yan Sayfadadır.  
The rest of the table is on the next page.

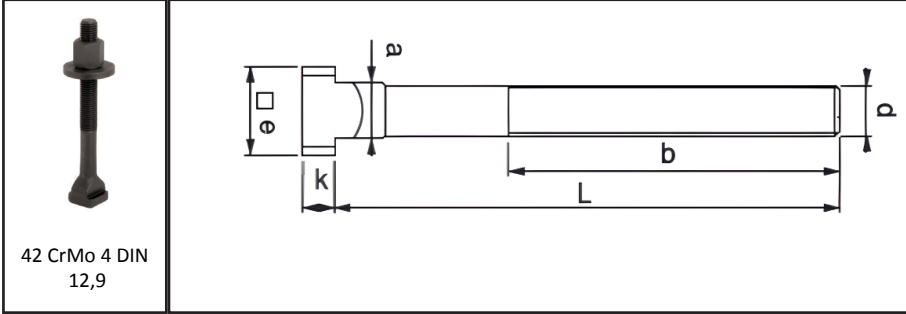


TAS1590-1416063	x63	45						115
TAS1590-1416080	x80	55						140
TAS1590-1416100	x100	65						160
TAS1590-1416125	M14x16 x125	75	15.7	25	9	223	101	180
TAS1590-1416160	x160	100						220
TAS1590-1416200	x200	120						255
TAS1590-1416250	x250	150						300
TAS1590-1616063	x63	45						140
TAS1590-1616080	x80	55						160
TAS1590-1616100	x100	65						190
TAS1590-1616125	M16x16 x125	85	15.7	25	9	354	138	225
TAS1590-1616160	x160	100						270
TAS1590-1616200	x200	120						315
TAS1590-1616250	x250	150						380
TAS1590-1618063	x63	45						170
TAS1590-1618080	x80	55						185
TAS1590-1618100	x100	65						220
TAS1590-1618125	M16x18 x125	85	17.7	28	10	354	138	245
TAS1590-1618160	x160	100						295
TAS1590-1618200	x200	120						340
TAS1590-1618250	x250	150						405
TAS1590-1820080	x80	55						260
TAS1590-1820100	x100	65						290
TAS1590-1820125	x125	85						340
TAS1590-1820160	M18x20 x160	110	19.7	32	12	474	169	390
TAS1590-1820200	x200	125						455
TAS1590-1820250	x250	150						535
TAS1590-1820315	x315	190						650
TAS1590-2020080	x80	55						300
TAS1590-2020100	x100	65						330
TAS1590-2020125	x125	85						380
TAS1590-2020160	M20x20 x160	110	19.7	32	12	679	215	450
TAS1590-2020200	x200	125						535
TAS1590-2020250	x250	160						635
TAS1590-2020315	x315	190						760
TAS1590-2022080	x80	55						345
TAS1590-2022100	x100	65						380
TAS1590-2022125	x125	85						435
TAS1590-2022160	M20x22 x160	110	21.7	35	14	679	215	500
TAS1590-2022200	x200	125						590
TAS1590-2022250	x250	160						695
TAS1590-2022315	x315	190						820

- Not:150 °C üzerindeki ortamlarda sıkma işlemi yapılırken dişlerin üzerine Loctite 8150 kullanılır.
- Note: Environments on the 150 °C when clamping action on the thread Loctite 8150 is used.



TAS1590-2224080	x80	55							465
TAS1590-2224100	x100	65							515
TAS1590-2224125	x125	85							580
TAS1590-2224160	x160	110	23.7	40	16	903	266		660
TAS1590-2224200	x200	125							775
TAS1590-2224250	x250	150							805
TAS1590-2224315	x315	190							1050
TAS1590-2424100	x100	70							550
TAS1590-2424125	x125	85							630
TAS1590-2424160	x160	110							725
TAS1590-2424200	x200	125	23.7	40	16	1163	310		850
TAS1590-2424250	x250	150							990
TAS1590-2424315	x315	190							1180
TAS1590-2424400	x400	240							1410
TAS1590-2428100	x100	70							660
TAS1590-2428125	x125	85							730
TAS1590-2428160	x160	110							820
TAS1590-2428200	x200	125	27.7	44	18	1163	310		950
TAS1590-2428250	x250	150							1090
TAS1590-2428315	x315	190							1300
TAS1590-2428400	x400	240							1530
TAS1590-2428500	x500	290							1800
TAS1590-3036125	x125	80							1280
TAS1590-3036160	x160	110							1440
TAS1590-3036200	x200	135	35.6	54	22	2258	493		1620
TAS1590-3036250	x250	150							1880
TAS1590-3036315	x315	200							2150
TAS1590-3036500	x500	300							3010
TAS1590-3642160	x160	100							2260
TAS1590-3642250	x250	175	41.6	65	26	3953	719		2890
TAS1590-3642400	x400	250							4010
TAS1590-3642600	x600	340							5900
TAS1590-4248160	x160	100							3550
TAS1590-4248250	x250	175	47.6	75	30	6337	986		4530
TAS1590-4248400	x400	250							6160




42 CrMo 4 DIN  
12,9

Kalip İş Parçası  
Bağlantı  
Elemanları

Kod - Code	dx	xL	b	a	e	k	Tightening Data Sıkma Verileri		
							Nm	kN	
SAS1610-0606025	M6x6	x25	15	5.7	10	4	17	17	19
SAS1610-0606025		x40	28						25
SAS1610-0606025		x63	40						36
SAS1610-0808032	M8x8	x32	22	7.7	12	6	43	32	39
SAS1610-0808050		x50	35						45
SAS1610-0808080		x80	50						56
SAS1610-1010040	M10x10	x40	23	9.7	15	6	79	51	65
SAS1610-1010063		x63	45						80
SAS1610-1010080		x80	50						90
SAS1610-1010100		x100	60						110
SAS1610-1012050	M10x12	x50	35	11.7	18	7	79	51	85
SAS1610-1012063		x63	40						95
SAS1610-1012080		x80	55						100
SAS1610-1012100		x100	60						110
SAS1610-1012125		x125	75						125
SAS1610-1012160		x160	90						140
SAS1610-1012200		x200	120						160
SAS1610-1212050	M12x12	x50	35	11.7	18	7	141	74	120
SAS1610-1212063		x63	40						128
SAS1610-1212080		x80	55						140
SAS1610-1212100		x100	65						160
SAS1610-1212125		x125	75						170
SAS1610-1212160		x160	100						195
SAS1610-1212200		x200	120						220

Tablonun Devamı Yan Sayfadadır.  
The rest of the table is on the next page.



Kod - Code	dx	xL	b	a	e	k	Tightening Data		
							Sıkma Verileri	Sıkma Verileri	
							Nm	kN	(g)
SAS1610-1214050		x50	35						140
SAS1610-1214063		x63	45						150
SAS1610-1214080		x80	55						155
SAS1610-1214100	M12x14	x100	65	13.7	22	8	223	101	175
SAS1610-1214125		x125	75						195
SAS1610-1214160		x160	100						220
SAS1610-1214200		x200	120						240
SAS1610-1416063		x63	45						200
SAS1610-1416080		x80	55						230
SAS1610-1416100		x100	65						245
SAS1610-1416125	M14x16	x125	75	15.7	25	9	354	138	270
SAS1610-1416160		x160	100						310
SAS1610-1416200		x200	120						340
SAS1610-1416250		x250	150						390
SAS1610-1616063		x63	45						260
SAS1610-1616080		x80	55						285
SAS1610-1616100		x100	65						310
SAS1610-1616125	M16x16	x125	85	15.7	25	9	354	138	345
SAS1610-1616160		x160	100						385
SAS1610-1616200		x200	120						435
SAS1610-1616250		x250	150						505
SAS1610-1618063		x63	45						290
SAS1610-1618080		x80	55						305
SAS1610-1618100		x100	65						340
SAS1610-1618125	M16x18	x125	85	17.7	28	10	354	138	370
SAS1610-1618160		x160	100						415
SAS1610-1618200		x200	120						460
SAS1610-1618250		x250	150						525
SAS1610-1820080		x80	55						405
SAS1610-1820100		x100	65						435
SAS1610-1820125		x125	85						480
SAS1610-1820160	M18x20	x160	110	19.7	32	12	474	169	535
SAS1610-1820200		x200	125						610
SAS1610-1820250		x250	150						680
SAS1610-1820315		x315	190						790
SAS1610-2020080		x80	55						480
SAS1610-2020100		x100	65						515
SAS1610-2020125		x125	85						570
SAS1610-2020160	M20x20	x160	110	19.7	32	12	679	215	635
SAS1610-2020200		x200	125						725
SAS1610-2020250		x250	160						820
SAS1610-2020315		x315	190						950
SAS1610-2022080		x80	55						530
SAS1610-2022100		x100	65						565
SAS1610-2022125		x125	85						620
SAS1610-2022160	M20x22	x160	110	21.7	35	14	679	215	690
SAS1610-2022200		x200	125						775
SAS1610-2022250		x250	150						880
SAS1610-2022315		x315	190						1050

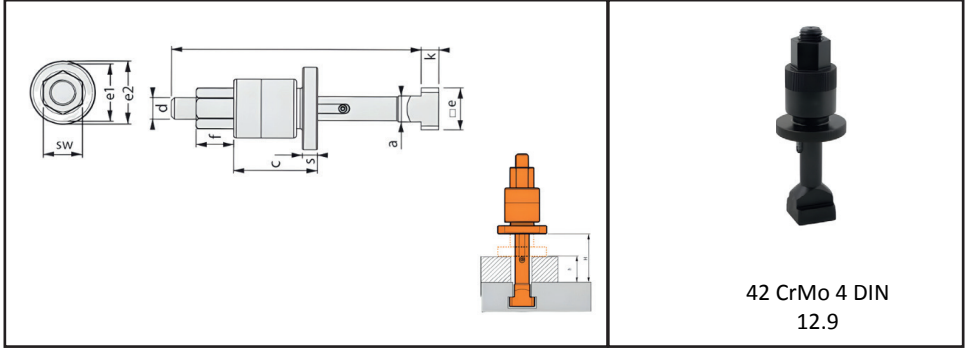
Tablonun Devamı Yan Sayfadadır.  
The rest of the table is on the next page.

Tightening Data  
Sıkma Verileri

Kod - Code

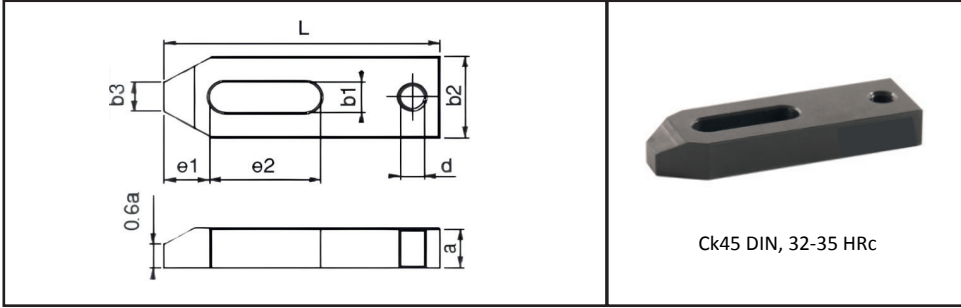
Kod - Code	dx	xL	b	a	e	k	Nm	kN	(g)
SAS1610-2224080		x80	55						700
SAS1610-2224100		x100	65						740
SAS1610-2224125		x125	85						805
SAS1610-2224160	M22x24	x160	110	23.7	40	16	903	206	890
SAS1610-2224200		x200	125						1000
SAS1610-2224250		x250	150						1115
SAS1610-2224315		x315	190						1280
SAS1610-2424100		x100	70						885
SAS1610-2424125		x125	85						970
SAS1610-2424160	M24x24	x160	110	23.7	40	16	1163	310	1060
SAS1610-2424200		x200	125						1180
SAS1610-2424250		x250	150						1320
SAS1610-2424315		x315	190						1515
SAS1610-2424400		x400	240						1750
SAS1610-2428100		x100	70						1000
SAS1610-2428125		x125	85						1065
SAS1610-2428160	M24x28	x160	110	27.7	44	18	1163	310	1150
SAS1610-2428200		x200	125						1280
SAS1610-2428250		x250	150						1425
SAS1610-2428315		x315	190						1640
SAS1610-2428400		x400	240						1870
SAS1610-2428500		x500	290						2170
SAS1610-3036125		x125	80						1900
SAS1610-3036160		x160	110						2065
SAS1610-3036200	M30x36	x200	135	35.6	54	22	2258	493	2250
SAS1610-3036250		x250	150						2500
SAS1610-3036315		x315	200						2770
SAS1610-3036500		x500	300						3630
SAS1610-3642160		x160	100						3310
SAS1610-3642250	M36x42	x250	175	41.6	65	26	3953	719	3930
SAS1610-3642400		x400	250						5010
SAS1610-3642600		x600	340						6900
SAS1610-4248160		x160	100						4600
SAS1610-4248250	M42x48	x250	175	47.6	75	30	6337	986	5600
SAS1610-4248400		x400	250						7200

Kalıp İş Parçası  
Bağlantı  
Elemanları



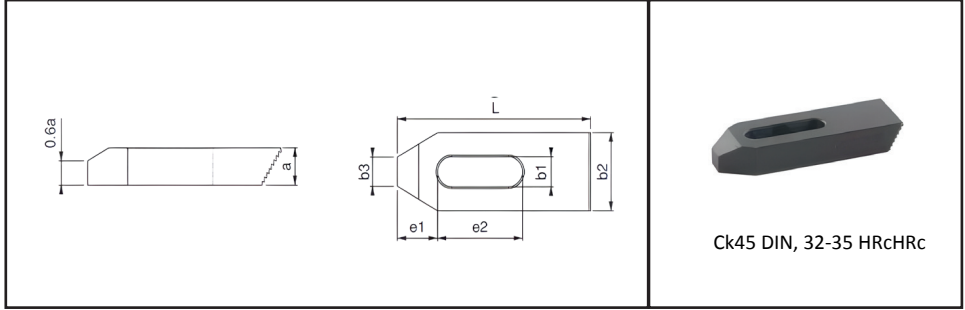
Kod - Code	dx	xl	a	e	k	h-H	e1	e2	c	s	f	sw	Nm	kN
KAS1630-2022200	M20x22x200	1635	21.7	35	14	25-75	49	69	92	12	30	30	679	215
KAS1630-2022250	M20x22x250	1720	21.7	35	14	70-120	49	69	92	12	30	30	679	215
KAS1630-2424200	M24x24x200	2075	23.7	40	16	25-75	53	74	92	12	30	36	1163	310
KAS1630-2424250	M24x24x250	2250	23.7	40	16	70-120	53	74	92	12	30	36	1163	310
KAS1630-2428200	M24x28x200	2180	27.7	44	18	25-75	53	74	92	12	30	36	1163	310
KAS1630-2428250	M24x28x250	2340	27.7	44	18	70-120	53	74	92	12	30	36	1163	310
KAS1630-3036200	M30x36x200	3660	35.6	54	22	25-75	68	88	94	14	30	46	2258	493
KAS1630-3036250	M30x36x250	3910	35.6	54	22	70-120	68	88	94	14	30	46	2258	493


- Ağır preslerde , büyük kalıplarda çalışma esnasında vibrasyondan kaynaklanan olabilecek gevşemeyi somunun kontrasında sıkma yapısından dolayı önler.
- It prevents loosening due to vibration during operation in heavy presses and large molds, due to the nut's counter tightening structure.
- Not:150 °C üzerindeki ortamlarda sıkma işlemi yapılırken dişlerin üzerine Loctite 8150 kullanılır.
- Note: Environments on the 150 °C when clamping action on the thread Loctite 8150 is used.



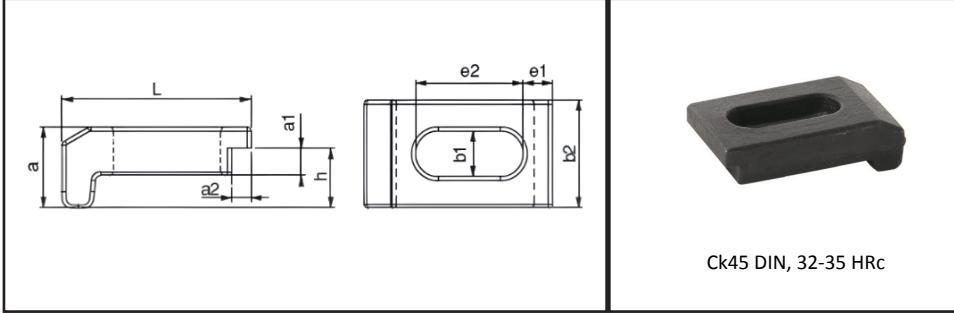
Ck45 DIN, 32-35 HRc

Kod - Code	L	b1	Metrik	Withworth	a	b2	b3	e1	e2	d	(g)
DP1330-06050	50	6.6	M6	1/4	10	20	8	10	20	M8	50
DP1330-08060	60	9	M8	5/16	12	25	10	13	22	M8	105
DP1330-10080	80	11	M10	3/8	15	30	12	15	30	M10	210
DP1330-12100	100	14.5	M12-M14	1/2	20	40	14	21	40	M12	465
DP1330-12125	125	14.5	M12-M14	1/2	20	40	14	21	50	M12	590
DP1330-16125	125	18.5	M16-M18	5/8	25	50	18	26	45	M16	930
DP1330-16160	160	18.5	M16-M18	5/8	25	50	18	26	65	M16	1200
DP1330-20160	160	22.5	M20-M22	3/4	30	60	22	30	60	M20	1710
DP1330-20200	200	22.5	M20-M22	3/4	30	60	22	30	80	M20	2170
DP1330-20250	250	22.5	M20-M22	3/4	35	70	30	30	100	M20	3885
DP1330-24160	160	26	M24	1	30	70	26	35	60	M24	1965
DP1330-24200	200	26	M24	1	35	70	26	35	80	M24	2920
DP1330-24250	200	26	M24	1	35	70	26	35	100	M24	3720
DP1330-24315	315	26	M24	1	40	80	35	35	100	M24	6435
DP1330-30250	250	33	M30	11/4	40	80	34	45	100	M24	4825
DP1330-30315	315	33	M30	11/4	50	80	34	45	130	M24	7665
DP1330-36400	400	43	M36-M42	11/2	58	100	43	100	150	M30	14490




Kod-code	L	b1	metrik	withworth	a	b2	b3	e1	e2	
MP1290-06050	50	6.6	M6	1/4	10	20	8	10	20	50
MP1290-06080	80	6.6	M6	1/4	10	20	8	10	30	95
MP1290-08060	60	9	M8	5/16	12	25	10	13	22	100
MP1290-08100	100	9	M8	5/16	12	25	10	13	45	170
MP1290-10080	80	11	M10	3/8	15	30	12	15	30	190
MP1290-10100	100	11	M10	3/8	15	30	12	15	45	225
MP1290-12100	100	14.5	M12-M14	1/2	20	40	14	21	45	435
MP1290-12125	125	14.5	M12-M14	1/2	20	40	14	21	55	580
MP1290-16125	125	18.5	M16-M18	5/8	25	50	18	26	55	855
MP1290-16160	160	18.5	M16-M18	5/8	25	50	18	26	65	1175

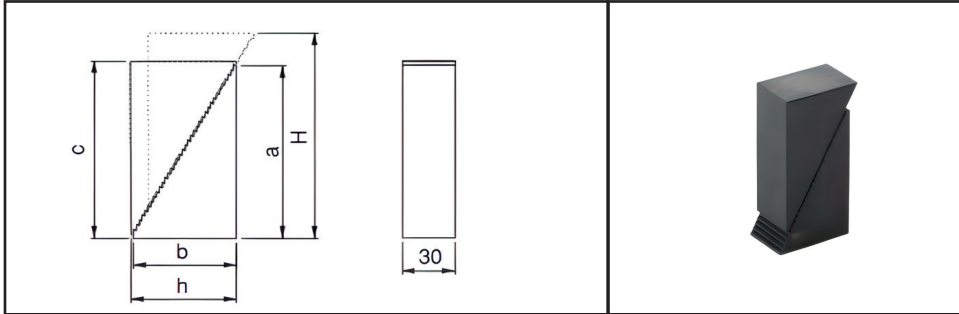
- MD1310 Merdiven destek ile kullanılır.
- Product is used with MD1310 Serrated Support .




Ck45 DIN, 32-35 HRc

Kod - Code	L	b1	Metrik	Withworth	a	b2	a1xa2	e1	e2	h	
PP1387-12070	70	13	M12	1/2	21.5	40	8x6	11	40	14	255
PP1387-16070	70	17	M16	5/8	29.5	40	10x7	11	40	22	290

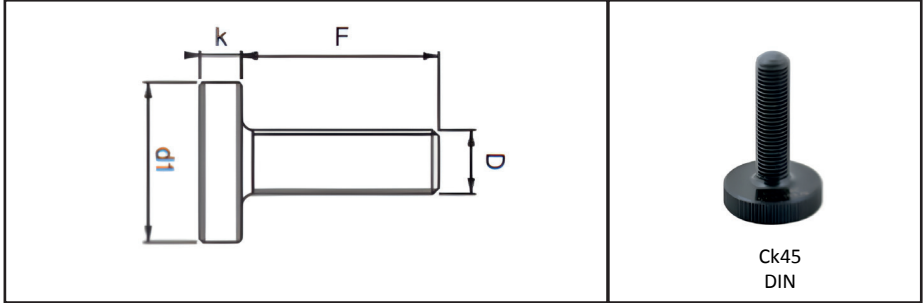
- Yükselticisiz çalışma özelliği avantajı sağlar.
- Provides the advantage of working without support.


 MD1310  
 MERDİVEN DIŞ DESTEK  
 Serrated Thread Support


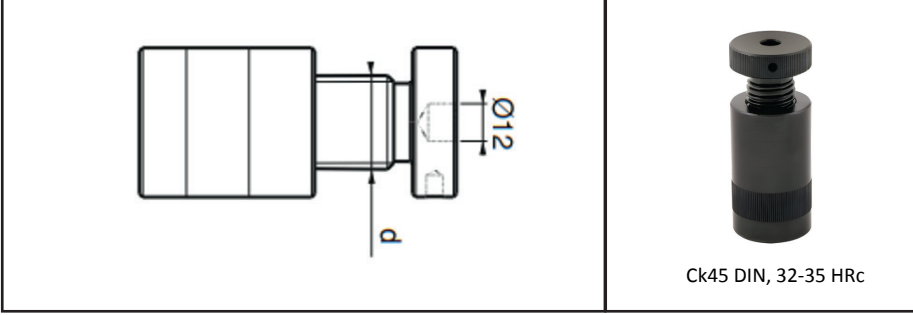
Kod-Code	h-H	a	b	c	Min-Max	
MD1310-01	37-85	57	35	60	0-40	505
MD1310-02	48-112	73	45	76	0-60	825
MD1310-03	58-139	90	55	93	0-75	1250
MD1310-04	66-165	108	64	111	0-90	1685

- MP1290 Merdiven dış pabuç ile kullanılır.
- Product is used with MP1290 Serrated Thread Clamp














Kod - Code	D x f	d1	k	 (g)
PC1490-08032	M8x32	25	8	40
PC1490-10042	M10x42	30	8	60
PC1490-12050	M12x50	36	10	110
PC1490-12095	M12x95	36	10	150
PC1490-16062	M16x62	45	13	240
PC1490-16097	M16x97	45	13	285
PC1490-16117	M16x117	45	13	310
PC1490-20062	M20x62	50	13	320
PC1490-20097	M20x97	50	13	390
PC1490-20117	M20x117	50	13	430
PC1490-24081	M24x81	50	14	445
PC1490-24116	M24x116	50	14	555
PC1490-30180	M30x180	70	24	1650



Ck45 DIN, 32-35 HRc

Kod - Code		d			 kgf	 (g)
TD1510-023030	23-30	M16	34	32	1000	140
TD1510-040060	40-60	M16	34	32	1800	250
TD1510-042052	42-52	Tr30x4	50	50	6000	570
TD1510-050070	50-70	Tr30x4	50	50	6000	680
TD1510-070100	70-100	Tr30x4	50	50	6000	960
TD1510-100140	100-140	Tr30x4	50	50	6000	1395
TD1510-140220	140-220	Tr30x4	54	54	6000	2285
TD1510-210330	210-330	Tr30x6	58	58	8000	3950
TD1510-260430	260-430	Tr30x6	68	68	8000	7250

- TD1510 yükselticiler DIN 6314-6315-6316 pabuçlarda yükseltici destek amaçlı kullanılır.
- TD1510 Lifters are used in DIN 6314-6315-6316 clamps as the lifter support

Referans Nr.				d x L	DIN 6379
BS1990-1012	M10x12	265x255	6,44	M10x80-100-160-200	
BS1990-1214	M12x14	305x255	8,72	M12x80-100-160-200	
BS1990-1416	M14x16	435x255	12,98	M14x80-100-160-200	
BS1990-1618	M16x18	435-255	16,3	M16x80-100-160-200	
BS1990-1820	M18x20	495x255	17,82	M18x80-100-160-200	
BS1990-2022	M20x22	540x255	23,10	M20x100-125-160-200	




**Ürün nr. BS1990 Vidalı Yükselticili Bağlama Set**

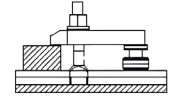
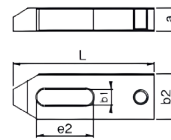
Tabla Üzerine iş parçası ve aparatların hızlı ve güvenli bir şekilde bağlanması için çelik mamülden üretilmiş parçalardan oluşan bağlama seti.

**Product Nr. BS1990 Screwed Coupling Set With Lifter**

This is the coupling set produced from steel product in order to couple the work piece or apparatuses on the table in a rapid and safe way



Nr.	L	b1		a	e2	b2
DP1330	80	11	M10	15	30	30
DP1330	100 125	14,5	M12-M14	20	40	40
DP1330	125 160	18,5	M16-M18	25	45 65	50
DP1330	160 200	22,5	M20-M22	30	60 80	60



DIN 508

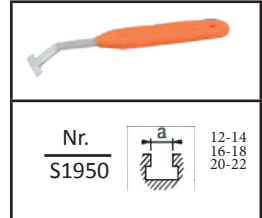
DIN 6330 B

Nr. US 1830

DIN 6331

DIN 6340

12	M10	M10	M10	M10	M10
14	M12	M12	M12	M12	M12
16	M16	M14	M14	M14	M14
18	M18	M16	M16	M16	M16
20	M19	M18	M18	M18	M18
22	M20	M20	M20	M20	M20

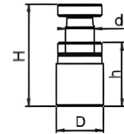


Nr.  
S1950



12-14  
16-18  
20-22

Nr.	h	H	d	D
TD1510	23	30	M16	34
TD1510	40	60	M16	34
TD1510	70	100	Tr 30x4	50
TD1510	100	140	Tr 30x4	50







**Ürün:52 Parça Vida Yükselticili İş Bağlama Set**

- 6 adet DIN 508 T-Pabuç (M20x22 4 adet)
- 16 adet DIN 6379 saplama
- 6 adet DIN 6330B Takviyeli Somun
- 4 adet DIN 6331 pullu somun
- 2 adet US1830 uzatma somun
- 4 adet DIN 6340 Kalın Pul
- 4 adet Nr. DP1330 Destek delikli pabuç
- 8 adet Nr. TD1510 Vida diş yükseltici destek
- 1 adet Nr. S1950 T-Kanal temizleyici
- 1 adet statik boyalı çelik set

**Product: 52 Piece set of Screwed Coupling Set With Lifter**

- 6 pieces of DIN 508 T-Nut (M20x22 4 piece)
- 16 pieces of DIN 6379 Stud
- 6 pieces of DIN 6330B Supported Nut
- 4 pieces of DIN 6331 Nut with Washer
- 2 pieces of US 1830 Extension Nut
- 4 pieces of DIN 6340 Thick Washer
- 4 pieces of No. DP1330 Clamp with support hole
- 8 pieces of No. TD1510 Screw Thread Lifter Support
- 1 pieces of No. S1950 T-Slot Scraper
- 1 pieces of steel set with statical paint

Referans Nr.				$d \times L$	DIN 6379 
BS2010-1012	M10x12	330x255	7,27	M10x80-100-160-200	
BS2010-1214	M12x14	380x255	9,26	M12x80-100-160-200	
BS2010-1416	M14x16	435x255	12,29	M14x80-100-160-200	
BS2010-1618	M16x18	435x255	15,62	M16x80-100-160-200	
BS2010-1820	M18x20	495x255	18	M18x80-100-160-200	




**Ürün nr. BS2010 Merdiven Yükselticili Bağlama Set**

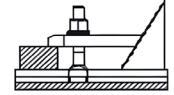
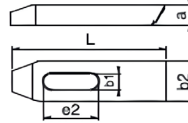
Tabla Üzerine iş parçası ve aparatların hızlı ve güvenli bir şekilde bağlanması için çelik mamülden üretilmiş parçalardan oluşan bağlama seti.

**Product Nr. BS2010 Coupling Set With Serrated Hell Block**

This is the coupling set produced from steel product in order to couple the work piece or apparatuses on the table in a rapid and safe way



Nr	L	b1		a	e2	b2
MP1290	80 100	11	M10	15	30 45	30
MP1290	100 125	14,5	M12-M14	20	45 55	40
MP1290	125 160	18,5	M16-M18	25	65 65	50



DIN 508

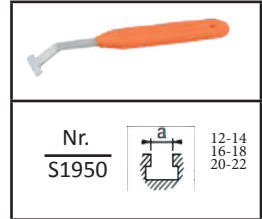
DIN 6330 B

Nr. US 1830

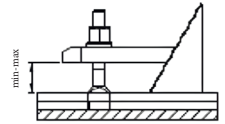
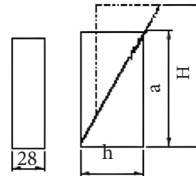
DIN 6331

DIN 6340

12	M10	M10	M10	M10	M10
14	M12	M12	M12	M12	M12
16	M16	M14	M14	M14	M14
18	M18	M16	M16	M16	M16
20	M19	M18	M18	M18	M18
22	M20	M20	M20	M20	M20



Nr.	h-H	a	min-max
MD1310	37-85	57	0-40
MD1310	48-112	73	0-60
MD1310	58-139	90	0-75
MD1310	66-165	108	0-90



**Ürün:52 Parça Merdiven Destekli İş Bağlama Set**

- 6 adet DIN 508 T-Pabuç (M20x22 4 adet)
- 16 adet DIN 6379 saplama
- 6 adet DIN 6330B Takviyeli Somun
- 4 adet DIN 6331 pullu somun
- 2 adet US1830 uzatma somun
- 4 adet Nr. MP1290 merdiven pabuç
- 8 adet Nr. MD1310 merdiven diş de stok
- 1 adet Nr. S1950 T-Kanal temizleyici
- 1 adet statik boyalı çelik set

**Product: 52 Piece set of Coupling set with serrated He II Block**

- 6 pieces of DIN 508 T-Nut (M20x22 4 piece)
- 16 pieces of DIN 6379 Stud
- 6 pieces of DIN 6330B Supported Nut
- 4 pieces of DIN 6331 Nut with Washer
- 2 pieces of US1830 Extension Nut
- 4 pieces of No. MP1290 Serrated Clamp
- 8 pieces of No. MD1310 Clamp with support hole
- 1 pieces of No. S1950 T-Slot Scraper
- 1 pieces of steel set with statical paint

## BÖLÜM 2



### TAŞIMA VE KALDIRMA ELAMANLARI Carrying And Lifting Elements

- TB01,TB02,TB03,TB04,TB11,TB12,TB13
- TP02,TP03,TP05,TP06,TP10,TP11,TP12
- TMB01
- Kalıp Taşıma Braketleri
- Kalıp Taşıma Milleri
- Taşıma Milleri için Burçlar
- Lifting Brackets
- Lifting Pins
- Bush for Lifting Pins

#### DOĞRU TAŞIMA VE KALDIRMA TEKNİKLERİ Correct Carrying And Lifting Techniques

Taşıma ve kaldırma işleminin uygulanacağı bölge ve metot planlanmalıdır.

Taşıma ve kaldırma yönü ve hareket alanını etkileyen engeller kaldırılmalıdır.

Kullanılan taşıma ve kaldırma ekipmanları kullanıldıkları iş parçalarına doğru şekilde monte edilmiş olmalıdır.

Taşıma kaldırma işleminde katalog yük değerleri dışına çıkılmamalıdır.

Hasarlı bozuk elamanlar kesinlikle kullanılmamalıdır.

Taşıma ve kaldırma işlemi sırasında kullanılan vinç vb.

taşıyıcı ekipmanlar yükün ağırlığına uygun olmalı ve eğitim almış personel tarafından kumanda edilmelidir.

Taşıma ve kaldırma elamanları tespitinde kullanılan civata pim vb. harici elamanlar öngörülen kaldırma ve taşıma kuvvetine karşılayabilecek tipte ve özellikle seçilmelidir.

Kaldırma veya taşıma yapılan malzemeleri uzun süre askıda bırakmayınız.

The area and method for implementing lifting and handling operations should be carefully planned.

Obstacles that may affect the direction and movement area of lifting and handling should be eliminated.

The lifting and handling equipment used should be correctly mounted for the respective workpieces.

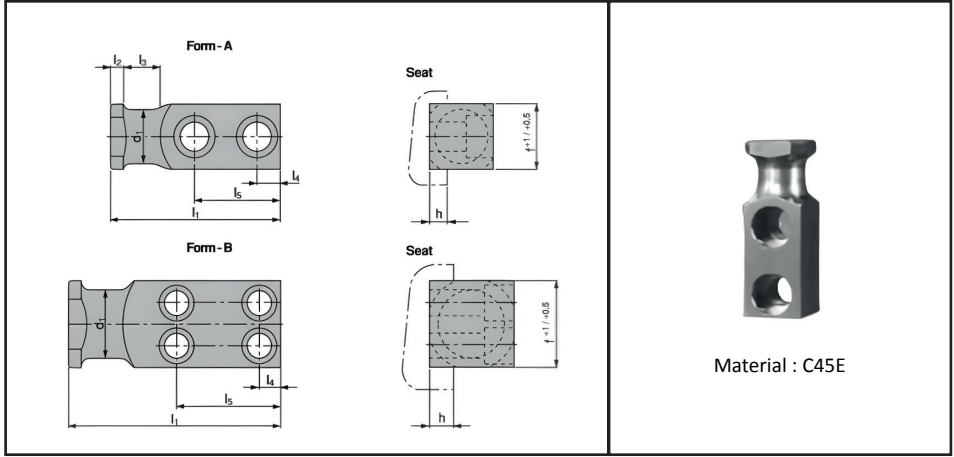
During lifting and handling operations, it is crucial not to exceed the catalog load values.

Damaged or defective elements must not be used under any circumstances.

Equipment such as cranes used in lifting and handling should be suitable for the weight of the load and controlled by personnel trained in their operation.

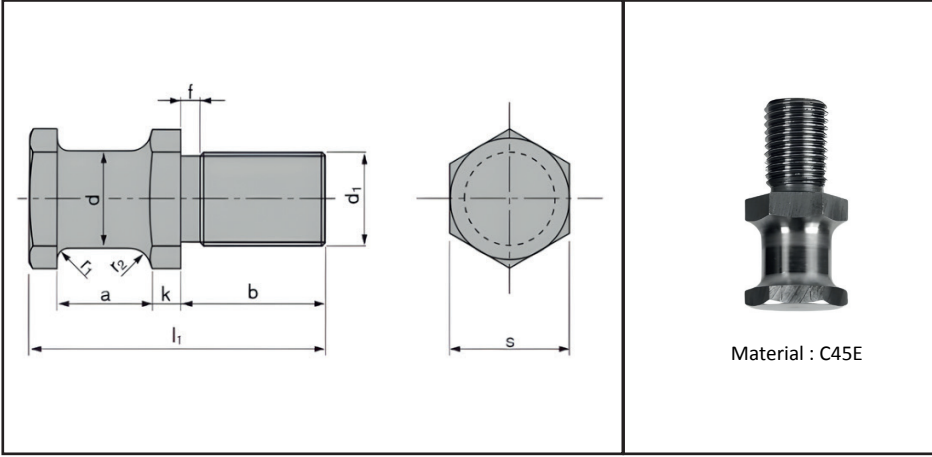
Fasteners like bolts and pins used in the identification of lifting elements should be chosen to meet the anticipated lifting and handling forces.

Avoid leaving materials lifted or transported hanging for extended periods.



Kod - Code	Max Kg	Tip									DIN912
			d1	f	h	l1	l2	l3	l4	l5	Screw 8.8
TB01-16	320	A	16	20	6	80	6	20	10	44	M8x25
TB01-20	630	A	20	25	8	90	8	25	12	47	M10x30
TB01-25	1250	A	25	35	10	100	8	30	12	50	M12x40
TB01-32	2000	A	32	40	10	120	10	32	16	62	M16x45
TB01-40	3200	A	40	50	12	140	10	40	18	72	M20x60
TB01-50	5000	A	50	60	14	160	12	45	22	81	M24x70
TB01-63	8000	B	63	80	16	200	12	50	20	94	M20x90
TB01-80	12500	B	80	100	18	250	15	65	25	125	M24x110
TB01-100	20000	B	100	120	20	300	15	80	30	155	M30x130

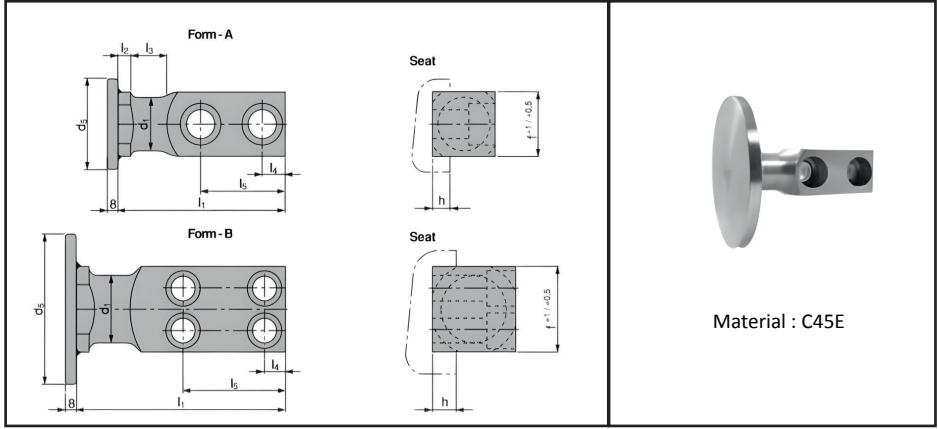
- Güvenlik nedeniyle kalıp ağırlığı iki adet taşıma braketinin taşıyabileceği maksimum yük miktarını aşmamalıdır.
- For safety reasons, the weight of the tool has to be supported by just two lifting brackets.



Material : C45E

Kod - Code	Max Kg	d	d1	a	b	f	k	l1	r1	r2	S
TB02-16	250	16	M16	20	28	3	5	58	5	8	24
TB02-20	500	20	M20	22	34	3	6	68	5	8	30
TB02-25	1000	25	M24	25	38	4	8	78	6	10	36
TB02-32	1500	32	M30	32	45	5	10	95	6	10	41
TB02-40	2500	40	M36	40	56	5	12	118	8	12	50

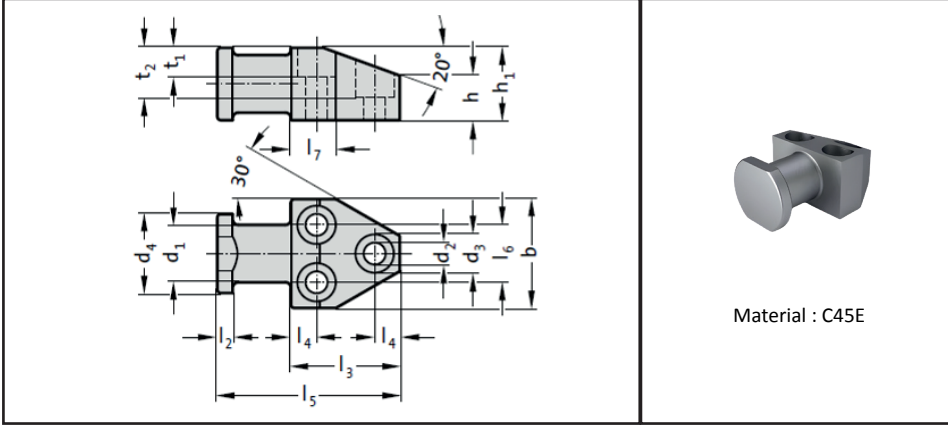
- Güvenlik nedeniyle kalıp ağırlığı iki adet taşıma braketinin taşıyabileceği maksimum yük miktarını aşmamalıdır.
- For safety reasons, the weight of the tool has to be supported by just two lifting brackets.



Kod - Code	Max Kg	Tip	d1	f	h	l1	l2	l3	l4	l5	d5	DIN912 Screw 8.8
TB03-16	320	A	16	20	6	80	6	20	10	44	60	M8x25
TB03-20	630	A	20	25	8	90	8	25	12	47	70	M10x30
TB03-25	1250	A	25	35	10	100	8	30	12	50	70	M12x40
TB03-32	2000	A	32	40	10	120	10	32	16	62	110	M16x45
TB03-40	3200	A	40	50	12	140	10	40	18	72	110	M20x60
TB03-50	5000	A	50	60	14	160	12	45	22	81	150	M24x70
TB03-63	8000	B	63	80	16	200	12	50	20	94	150	M20x90
TB03-80	12500	B	80	100	18	250	15	65	25	125	150	M24x110
TB03-100	20000	B	100	120	20	300	15	80	30	155	150	M30x130

- Güvenlik nedeniyle kalıp ağırlığı iki adet taşıma braketinin taşıyabileceği maksimum yük miktarını aşmamalıdır.
- For safety reasons, the weight of the tool has to be supported by just two lifting brackets.

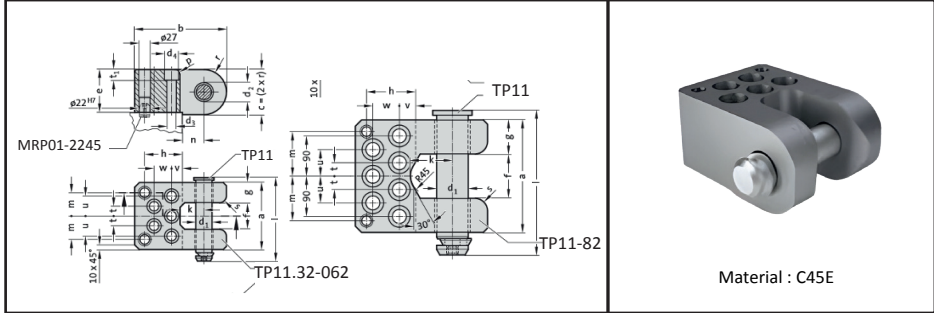




Material : C45E

Kod-Code	Max Kg	b	d1	d2	d3	d4	h	h1	l2	l3	l4	l5	l6	l7	t1	t2
TB04-060	2000	60	32	13,5	20	44	24	40	8	60	14	100	32	24	15	29
TB04-080	3500	80	40	17,5	26	60	32	50	10	70	16	120	44	26	20	35,5
TB04-100	6000	100	50	22	33	70	40	65	12	88	20	145	56	30	25	46,5

- Güvenlik nedeniyle kalıp ağırlığı iki adet taşıma braketinin taşıyabileceği maksimum yük miktarını aşmamalıdır.
- For safety reasons, the weight of the tool has to be supported by just two lifting brackets.

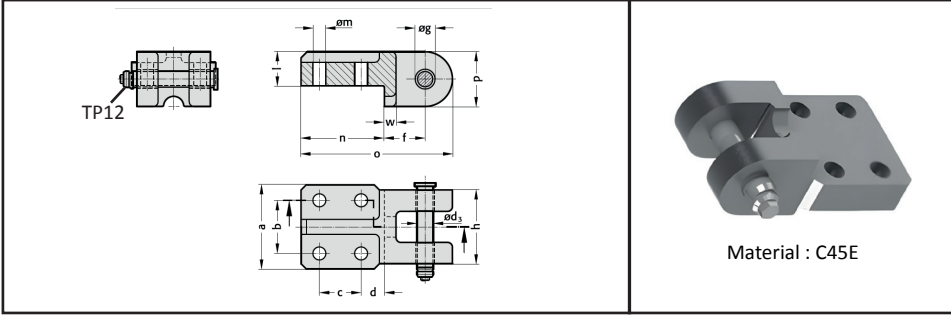


Material : C45E

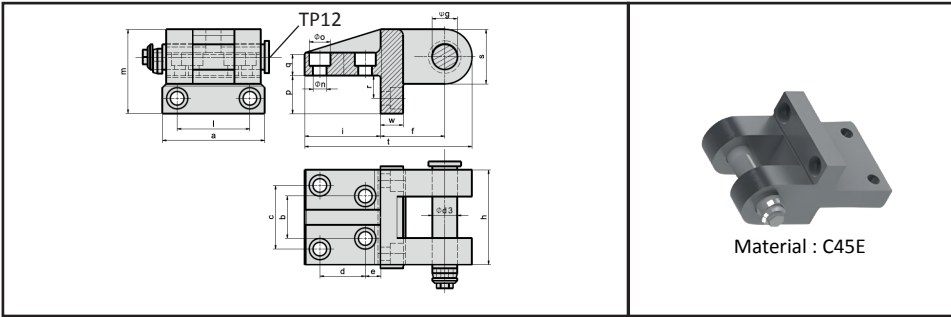
Kod-Code	d1	d2	a	b	c	e	f	g	h	k	l
TB11-32	30	32	126	185	80	75	50	38	85	50	158
TB11-42	40	42	150	210	100	95	60	45	87	55	187
TB11-52	50	52	175	240	120	115	75	50	95	70	220
TB11-62	60	62	200	300	140	130	80	60	145	80	246
TB11-82	80	82	250	300	160	150	100	75	105	95	305

Kod-Code	Max.kg	DIN 4762	m	n	p	s	t	u	v	w	d3	d4	t1
TB11-32	3200	M16X80	45	40	12	16	20	40	30	35	17.5	26	17.5
TB11-42	5000	M20X100	52	50	12	20	22.5	45	25	40	22	33	21.5
TB11-52	8000	M24X120	62.5	60	16	24	25	50	35	45	26	40	25.5
TB11-62	12500	M36X160	77.5	65	20	30	35	65	60	65	39	57	38
TB11-82	18000	M30X160	100	90	20	30	30	60	30	60	33	48	32

- Güvenlik nedeniyle kalıp ağırlığı iki adet taşıma braketinin taşıyabileceği maksimum yük miktarını aşmamalıdır.
- For safety reasons, the weight of the tool has to be supported by just two lifting brackets.



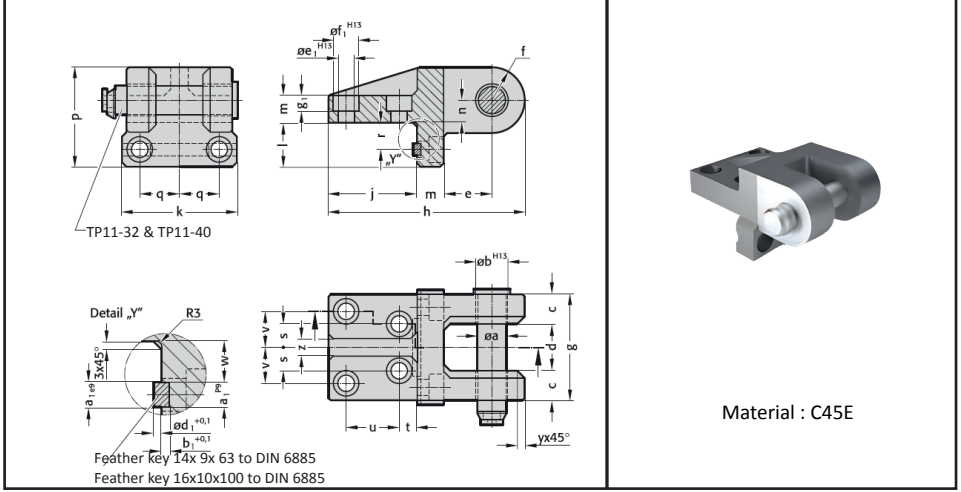
Kod-Code	a	b	c	d	f	g	h	i	m	n	o	p	w	d3	Max Kg
TB12-16	80	50	40	22.5	39	16	70	32	12.5	80	145	52	11	15.6	1200
TB12-21	90	60	40	27.5	42	21	79	36	16.5	90	160	56	13	20.6	2000
TB12-26	100	65	65	32.5	60	26	90	50	21	120	215	70	20	25.6	4000



Kod-Code	a	b	c	d	e	f	g H13	h	i	l	m
TB12-34	135	56	84	60	20	85	34	125	100	96	111
TB12-44	180	80	110	70	30	100	44	160	125	130	140

Kod-Code	n	o	p	q	r	s	t	w	d3	Max.kg
TB12-34	18	28	50	30	30	72	221	30	33	8000
TB12-44	22	36	60	40	35	90	270	40	43	14000

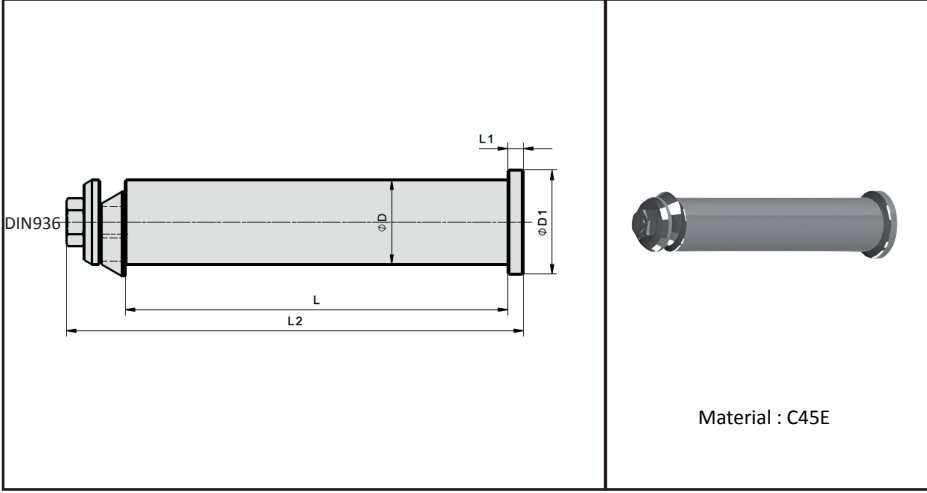
- Güvenlik nedeniyle kalıp ağırlığı iki adet taşıma braketinin taşıyabileceği maksimum yük miktarını aşmamalıdır.
- For safety reasons, the weight of the tool has to be supported by just two lifting brackets.



Kod-Code	a	b	c	d	e	f	g	h	j	k	l	m	n	p	q	r
TB13-33	32	33	35	55	55	36	125	221	100	135	50	30	25	111	48	30
TB13-41	40	41	50	60	60	45	160	270	125	180	60	40	35	140	65	35

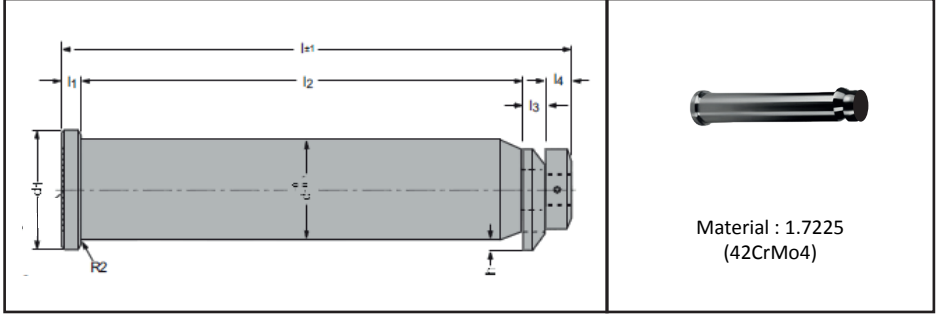
Kod-Code	s	t	u	v	w	y	z	a1	b1	d1	e1	f1	g1	Max Kg
TB13-33	28	20	60	42	24	10	20	14	4,5	4,5	18	28	17	4000
TB13-41	40	30	70	55	27	12,5	25	16	5	5	22	36	21	6300

- Güvenlik nedeniyle kalıp ağırlığı iki adet taşıma braketinin taşıyabileceği maksimum yük miktarını aşmamalıdır.
- For safety reasons, the weight of the tool has to be supported by just two lifting brackets.



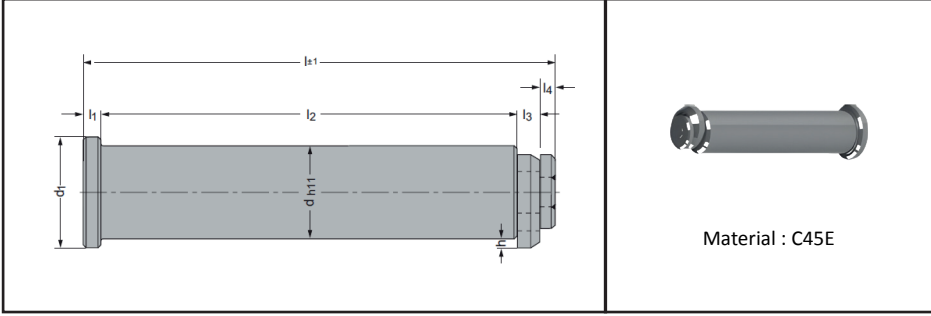
Kod-Code	Max Kg	D	L	D1	L1	L2
TP02-29	2000	29	150	38	6	178.5
TP02-33	3200	33	170	43	6	200.5
TP02-43	5000	43	195	53	8	233
TP02-53	8000	53	180	65	10	227
TP02-53a	8000	53	235	65	10	282
TP02-63	13000	63	215	78	12	272.5
TP02-63a	12000	63	295	78	12	352.5
TP02-78	30000	78	355	95	14	421.5

- Güvenlik nedeniyle kalıp ağırlığı iki adet taşıma braketinin taşıyabileceği maksimum yük miktarını aşmamalıdır.
- For safety reasons, the weight of the tool has to be supported by just two lifting brackets.



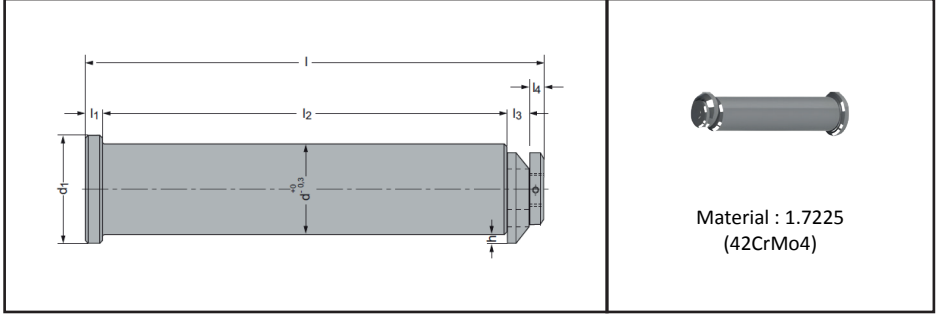
Kod-Code	Max Kg	d	d1	l	l1	l2	l3	l4	h
TP03-35	1500	35	45	165	10	124	15	15	6
TP03-50	5000	50	63	230	10	189	15	15	9
TP03-63	20000	63	76	320	10	279	15	15	9
TP03-80	30000	80	89	370	15	319	15	20	10

- Güvenlik nedeniyle kalıp ağırlığı iki adet taşıma braketinin taşıyabileceği maksimum yük miktarını aşmamalıdır.
- For safety reasons, the weight of the tool has to be supported by just two lifting brackets.



Kod-Code	Max Kg	d	d1	l	l1	l2	l3	l4	h
TP05-32	6000	32	40	154	6	132	10	5	5
TP05-40	9000	40	50	197.7	8	170	12.5	6	6
TP05-50	14000	50	63	247.6	10	212	16	8	8
TP05-63	22500	63	80	309	12	265	20	10	9.5

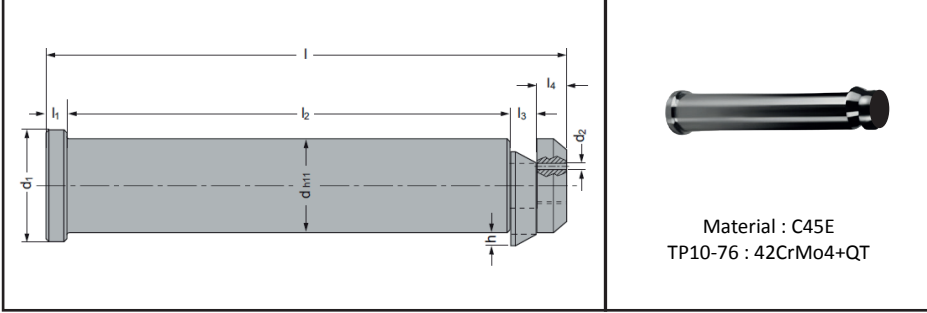
- Güvenlik nedeniyle kalıp ağırlığı iki adet taşıma braketinin taşıyabileceği maksimum yük miktarını aşmamalıdır.
- For safety reasons, the weight of the tool has to be supported by just two lifting brackets.



Kod-Code	Max Kg	d	d1	l	l1	l2	l3	l4	h
TP06-32	3400	32	40	177	5	155	9	8	4
TP06-40	5650	40	50	220	7	188	15	10	5,5
TP06-50	8950	50	60	270	9	230	16	15	5,5
TP06-63	14350	63	75	342	16	295	16	15	6,3
TP06-80	26700	80	89	387	16	335	16	20	6,3

- Güvenlik nedeniyle kalıp ağırlığı iki adet taşıma braketinin taşıyabileceği maksimum yük miktarını aşmamalıdır.
- For safety reasons, the weight of the tool has to be supported by just two lifting brackets.

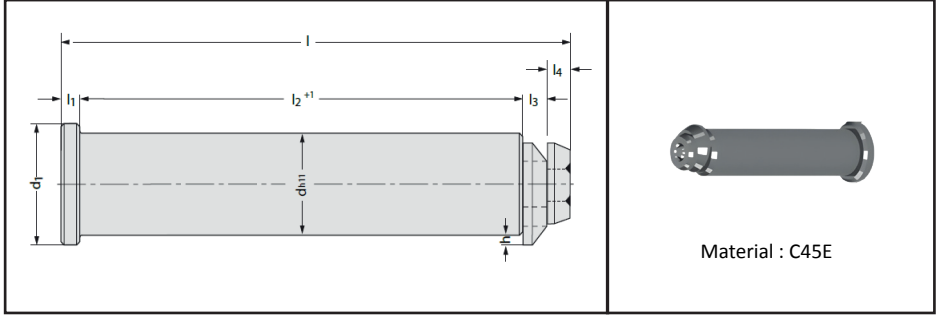




Taşıma Üe  
Kaldırma  
Elementleri

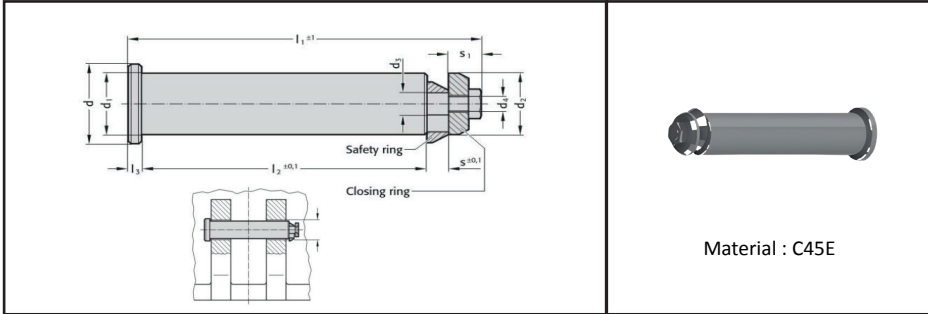
Kod-Code	Max Kg	dh11	d1	l	l1	l2	l4	l3	d2	h
TP10-32	3200	40	32	175	10	145	10	10	3x10	4
TP10-40	5000	50	40	225	10	188	13	14	4x12	6
TP10-50	8000	60	50	273	11	230	16	16	4x15	6
TP10-63	12500	75	63	347	14	295	20	18	5x20	7.5
TP10-76	31500	95	76	422	15	360	27	20	5x25	8

- Güvenlik nedeniyle kalıp ağırlığı iki adet taşıma braketinin taşıyabileceği maksimum yük miktarını aşmamalıdır.
- For safety reasons, the weight of the tool has to be supported by just two lifting brackets.



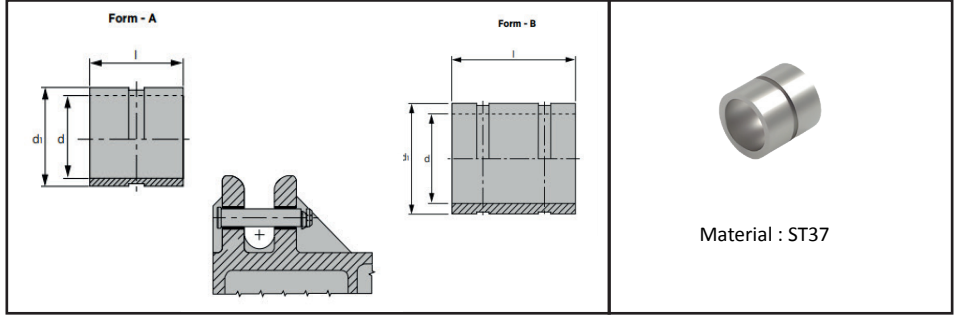
Kod-Code	Max Kg	d	l	d1	l1	l2	l3	l4	h
TP11-30	3200	30	158	40	10	129	11	8	4
TP11-40	4500	40	187	50	10	155	12	10	5
TP11-50	8000	50	220	60	11	180	16	13	7
TP11-60	10000	60	246	70	11	205	16	14	8.5
TP11-80	18000	80	305	90	12	255	20	18	10.5

- Güvenlik nedeniyle kalıp ağırlığı iki adet taşıma braketinin taşıyabileceği maksimum yük miktarını aşmamalıdır.
- For safety reasons, the weight of the tool has to be supported by just two lifting brackets.



Kod-Code	Max Kg	g	d	d1	d2	d3	d4	l1	l2	l3	s	s1
TP12-16	1200	16	25	15.6	15.6	6	M5	102.5	77	6	8	11.5
TP12-21	2000	21	30	20.6	20.6	7	M6	113.5	86	6	8	13.5
TP12-26	4000	26	35	25.6	25.6	9	M6	128.5	100	6	9	13.5
TP12-34	8000	34	43	33	33	12	M8	166.5	135	6	10	15.5
TP12-44	14000	44	53	43	43	16	M12	215.5	175	8	12	20.5

- Güvenlik nedeniyle kalıp ağırlığı iki adet taşıma braketinin taşıyabileceği maksimum yük miktarını aşmamalıdır.
- For safety reasons, the weight of the tool has to be supported by just two lifting brackets.



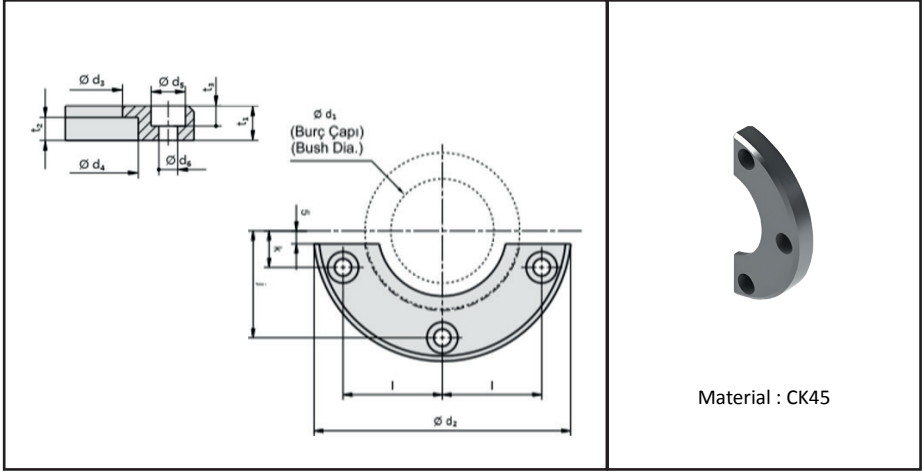
Kod-Code	Form	d	d1	l
TMB01-34	A	34	44	40
TMB01-42	A	42	52	50
TMB01-52	A	52	62	60
TMB01-65	A	65	75	80
TMB01-78	B	78	100	100
TMB01-78A	B	78	105	100

## BÖLÜM 3

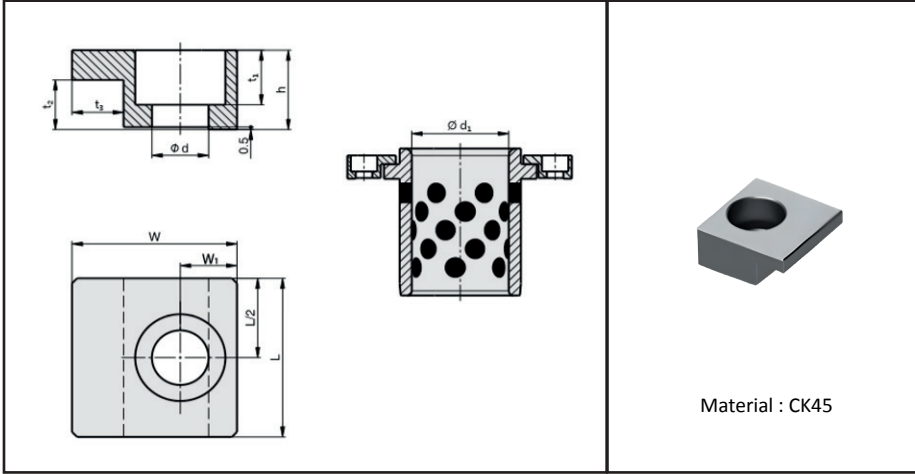


### KILAVUZLAMA ELAMANLARI Guide Elements

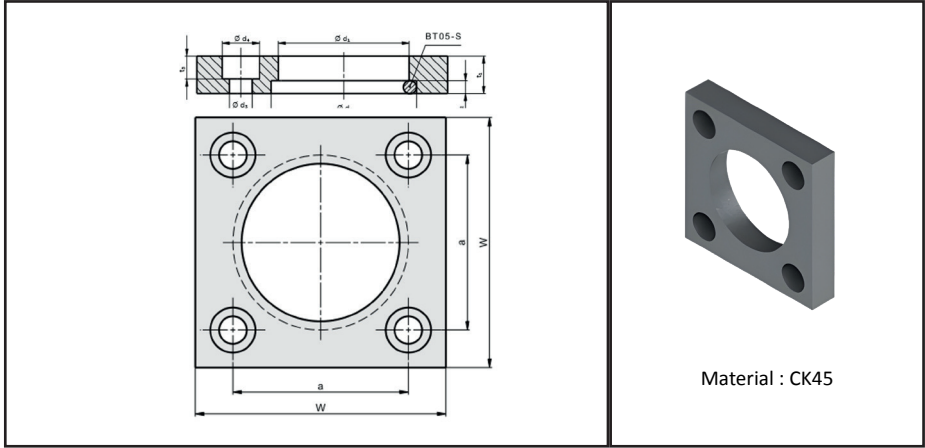
- BTF01 , BTF02
- KTF01
- KTS01
- KKP01
- KMF01
- BKSF01
- GDP01
- KMA07
- HRP01,02,03
- Burç Tutucular
- Kolon Tutucular
- Kolon Segmanları
- Kolon Kilitleme Plakası
- Kolon Montaj Flaşı
- Bilyalı Kafes Stoplama Flaşı
- Geri Dönüş Plakaları
- Matris Tutucu Kama
- Zimba Tutucuları
- Toe Clamp for Bush Self lubricating
- Guide Post Retainers
- Guide Posts Retainer Rings
- Guide Locking Plate
- Retaining Disc
- Ball Cage Stop Flange
- Positive Return Clamp for V Drivers
- Key
- Headed Punch Retainers



Kod-Code	d1	d2	d3	d4	d5	d6	t1	t2	t3	k	j	l
BTF01-25	25	72	32	41	12	6.6	10	5	7	20	-	20
BTF01-32	32	80	40	51	12	6.6	12	6	7	21	-	25
BTF01-40	40	100	50	61	12	6.6	12	8	7	14	41	38.5
BTF01-50	50	125	63	72	16	9	16	10	9	17	49	46
BTF01-63	63	140	80	91	18	11	20	12	11	17	57.5	55
BTF01-80	80	180	100	113	22	14	25	16	13	20	72	70
BTF01-100	100	200	125	141	22	14	32	20	13	25	85	81

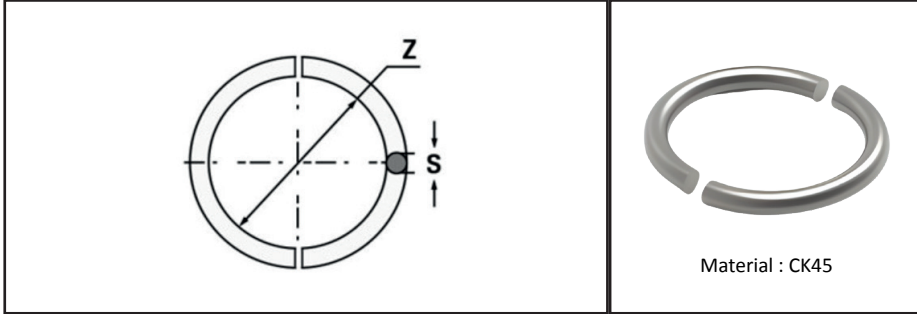


Kod-Code	L	W	d1	h	t1	t2	t3	W1	d
BTF02-01	20	20	Ø20-Ø40	10	7	6.3	5	7,5	7
BTF02-02	32	32	Ø50-Ø160	16	11,5	10	10	11	11,5
BTF02-03	32	32	Ø25-Ø125	16	11,5	6	10	11	11,5

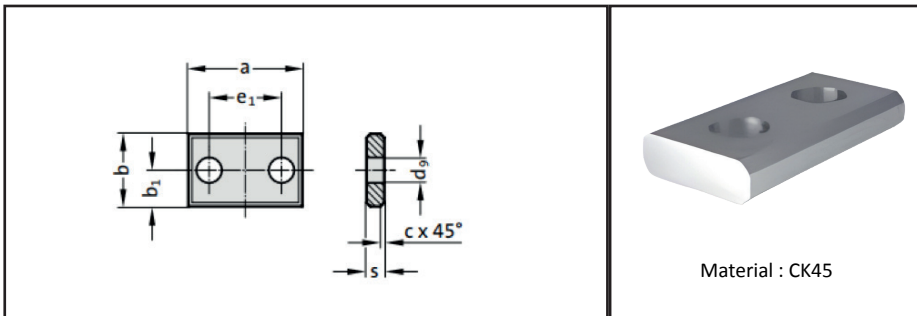


Kod-Code	W	d1	d2	t1	t2	t3	a	d3	d4
KTF01-25	45	25	28	10	2.7	7	31	6.6	11
KTF01-32	56	32	37	10	4.2	7	36	6.6	11
KTF01-40	70	40	45	12	4.2	7	50	6.6	11
KTF01-50	80	50	55	14	4.2	9	55	9	16
KTF01-63	100	63	70	18	6.2	11	70	11	18
KTF01-80	110	80	87	20	6.2	14	80	13	22
KTF01-100	140	100	107	20	6.2	14	100	13	22

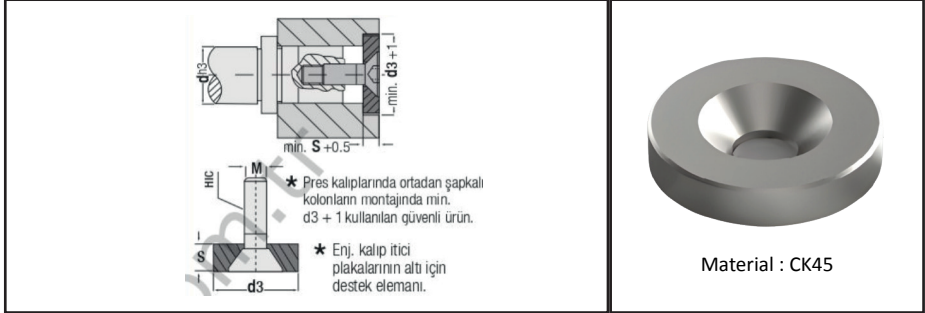




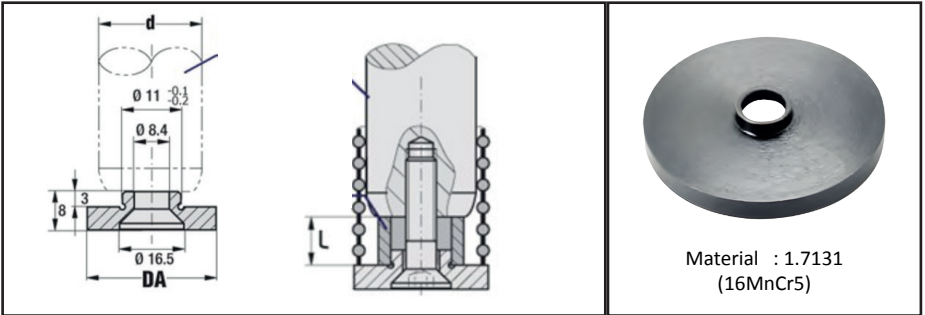
Kod-Code	Kolon	$\varnothing z$	s
KTS01-25	$\varnothing 25$	22.5	2.5
KTS01-32	$\varnothing 32$	28	4
KTS01-40	$\varnothing 40$	36	4
KTS01-50	$\varnothing 50$	46	4
KTS01-63	$\varnothing 63$	57	6
KTS01-80	$\varnothing 80$	74	6
KTS01-100	$\varnothing 100$	94	6

**KKP01**  
**KOLON KİLİTLEME PLAKASI**  
 Guide Locking Plate


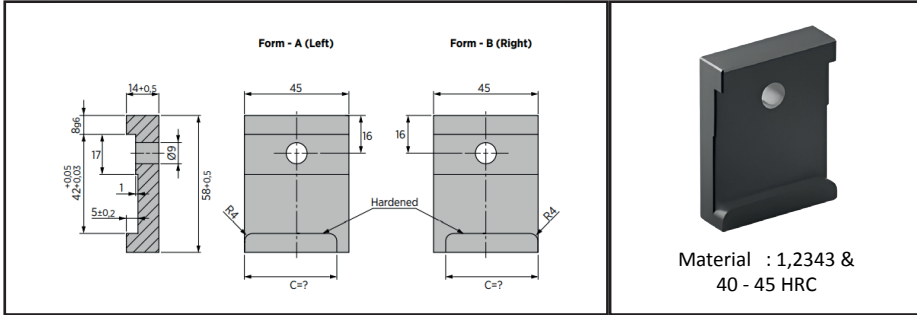
Kod-Code	Sütün $\varnothing$	a	b	s	c	b1	e1	d9
KKP01-25.32	25 u. 32	40	20	5	1	10	20	9
KKP01-40.50	40 u. 50	48	25	8	2	12.5	24	11
KKP01-63.80	63 u. 80	60	34	10	2	17	30	14



Kod-Code	Ø d3	Ø d	s	M
KMF01-22	22	15/16	5,5	M8X20
KMF01-25	25	19/20	5,5	M8X20
KMF01-32	32	24/25	5,5	M8X20
KMF01-40	40	32/30	7,5	M8X20
KMF01-50	50	38/40	9,5	M8X20
KMF01-60	60	48/50	9,5	M8X20
KMF01-73	73	60/63	9,5	M8X20
KMF01-93	93	80	12	M12X20

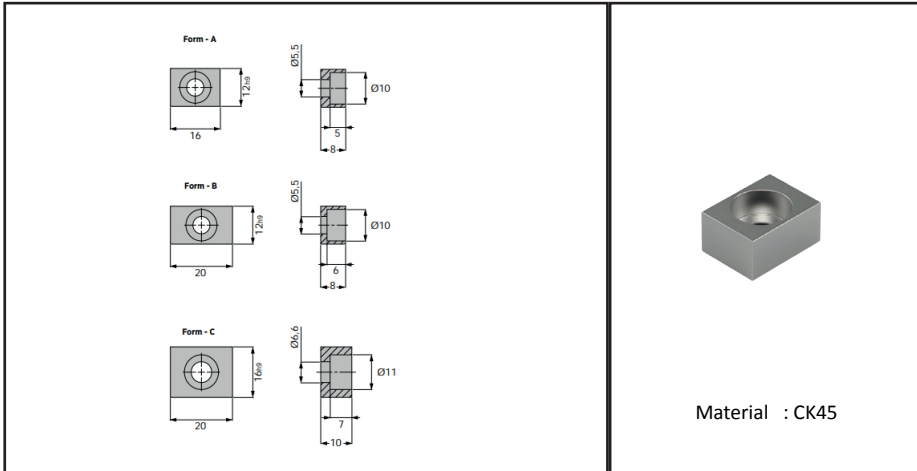


Kod	Ø d	DA
BKSF01-20	20	25
BKSF01-25	25	30
BKSF01-30	30	37
BKSF01-40	40	47
BKSF01-50	50	57
BKSF01-60	60	67
BKSF01-63	63	70

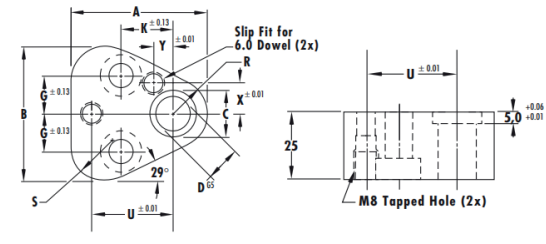


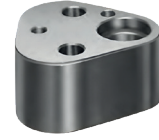
Kod-Code	Form	Yön-Location
GDP01-045-C	A + B	Her iki taraf - Set both sides
GDP01-045L-C	A	Sol-Left
GDP01-045R-C	B	Sağ-Right

KMA07  
MATRİS TUTUCU KAMA VW/AUDI 39V 1304  
FORD WDX 05-70M  
Key



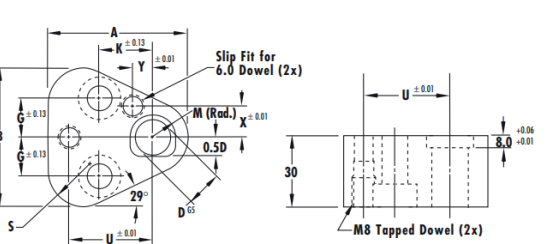
Kod-Code	Form
KMA07-A	A
KMA07-B	B
KMA07-C	C

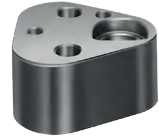




ISO 8020 round  
True Location  
Material : 1.7131 (16MnCr5) &  
48 - 52 HRC

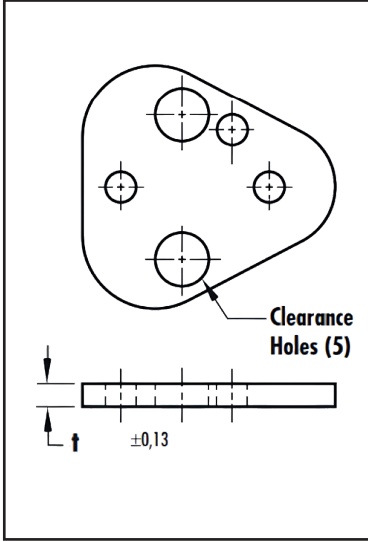
Kod-Code	D	A	B	C	G	K	R	S	U	X	Y	Screw Size
HPR01-10	10	44,5	43,7	14	11,1	19	9,5	12	26,925	9	7,5	M8
HPR01-13	13	50,8	50	17	14,3	19	12,7	15,2	29,97	12	6,5	M8
HPR01-16	16	54	53,2	20	15,9	19	14,3	16,8	31,75	13,5	6	M8
HPR01-20	20	60,3	59,5	24	17,5	19	17,5	20	33,53	16,5	5	M10
HPR01-25	25	69,9	69,1	29	19,8	23,8	22,2	24,7	40,64	22	7	M12
HPR01-32	32	69,9	69,1	36	19,8	23,8	22,2	24,7	40,64	22	7	M12





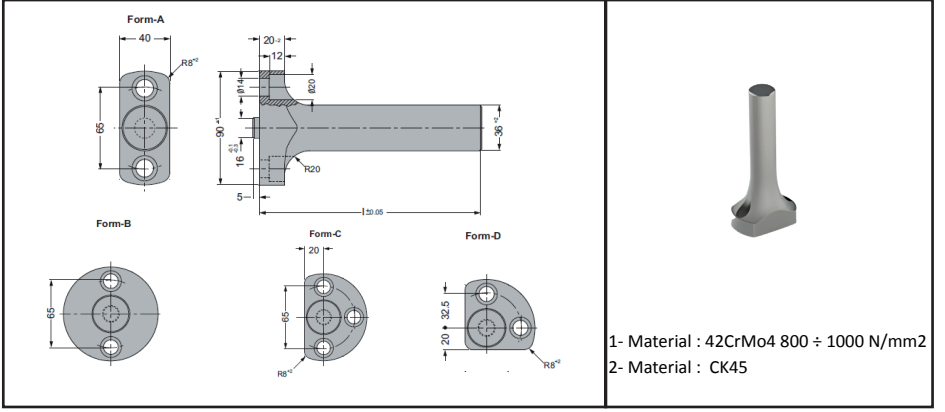
ISO 8020 Form  
True Location  
Material : 1.7131 (16MnCr5) &  
48 - 52 HRC

Kod-Code	D	A	B	G	K	M	R	S	U	X	Y	Screw Size
HPR02-10	10	44,5	43,7	11,1	19	7	9,5	12	26,925	9	7,5	M8
HPR02-13	13	50,8	50	14,3	19	8,5	12,7	15,2	29,97	12	6,5	M8
HPR02-16	16	54	53,2	15,9	19	10	14,3	16,8	31,75	13,5	6	M8
HPR02-20	20	60,3	59,5	17,5	19	12	17,5	20	33,53	16,5	5	M10
HPR02-25	25	69,9	69,1	19,8	23,8	14,5	22,2	24,7	40,64	22	7	M12
HPR02-32	32	69,9	69,1	19,8	23,8	14,8	22,2	24,7	40,64	22	7	M12



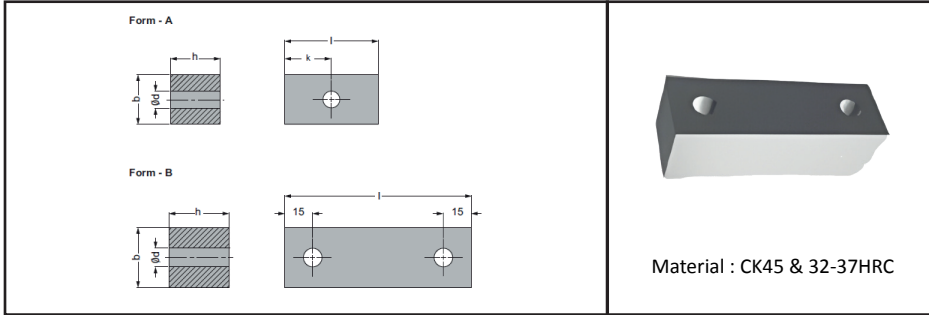
Kod-Code	D	A mm (Soft)	B mm (55HRC)
HPR03-10A	10	1,8	
HPR03-10B	10		4,8
HPR03-13A	13	1,8	
HPR03-13B	13		4,8
HPR03-16A	16	1,8	
HPR03-16B	16		4,8
HPR03-20A	20	1,8	
HPR03-20B	20		4,8
HPR03-25A	25	1,8	
HPR03-25B	25		4,8
HPR03-32A	32	1,8	
HPR03-32B	32		4,8





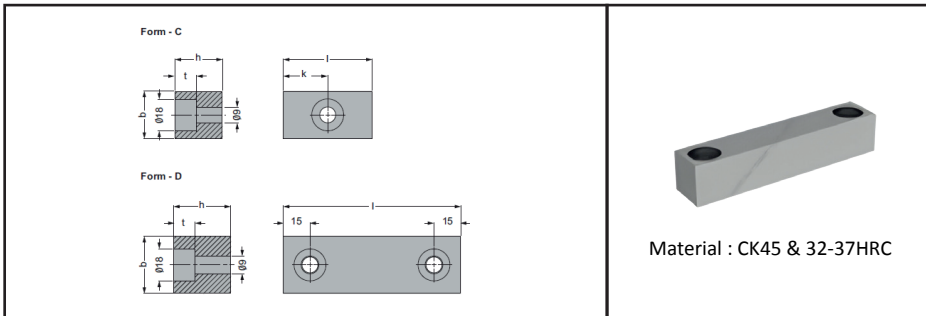
Kod-Code	Form
AP01-A-L?	A
AP01-B-L?	B
AP01-C-L?	C
AP01-D-L?	D

- Malzeme ve Uzunluk (L) müşteri tarafından verilir.
- Material and Length (L) is given by the customer.



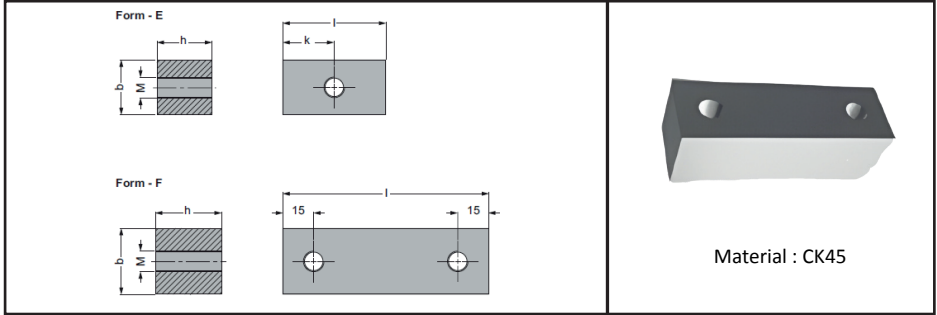
Kod-Code	b	h	l	d	k	Form
KMA01-20	20	20	50	9	25	A
KMA01-25	25	25	50	9	25	A
KMA01-32	32	32	100	11	-	B

KMA02  
KAMA PSA E24.56.630.G  
Key

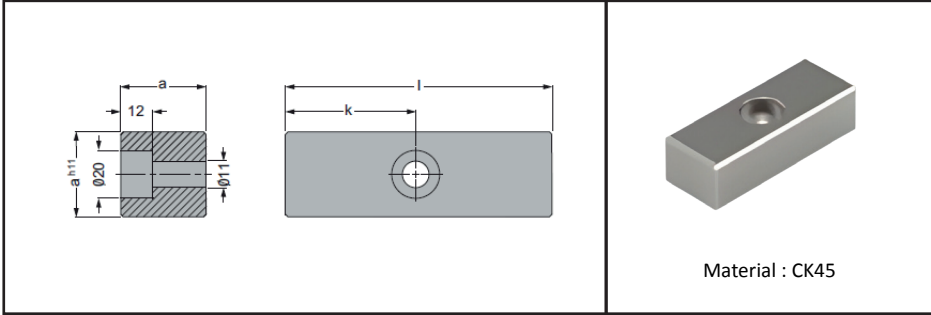


Kod-Code	b	h	l	t	k	Form
KMA02-25-50	25	25	50	12	25	C
KMA02-25-75	25	25	75	12	-	D
KMA02-32-50	32	32	50	9	25	C
KMA02-32-75	32	32	75	9	-	D



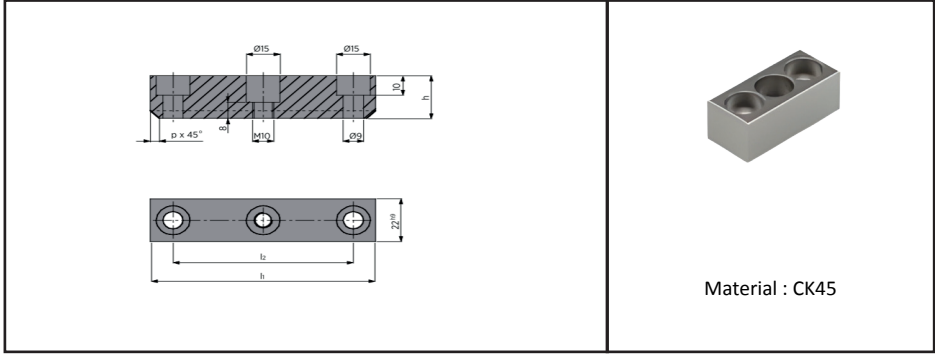


Kod-Code	b	h	l	M	k	Form
KMA03-082550	25	25	50	M8	25	E
KMA03-082575	25	25	75	M8	-	F
KMA03-102550	25	25	50	M10	25	E
KMA03-102575	25	25	75	M10	-	F
KMA03-083250	32	32	50	M8	25	E
KMA03-083275	32	32	75	M8	-	F
KMA03-103250	32	32	50	M10	25	E
KMA03-103275	32	32	75	M10	-	

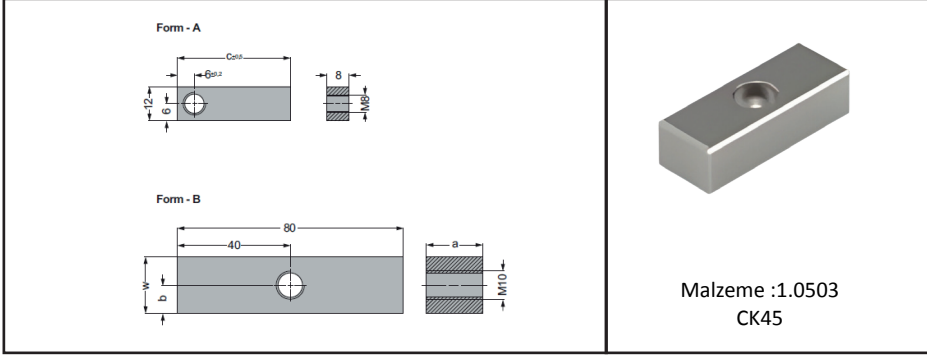


Kalip  
Elemanları

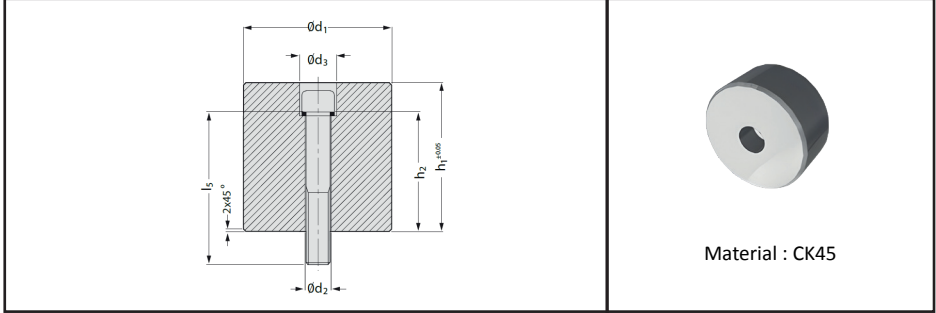
Kod-Code	a	l	k
KMA04-25080	25	80	40
KMA04-25125	25	125	62.5
KMA04-30080	30	80	40
KMA04-30125	30	125	62.5



Kod-Code	h	l1	l2	p
KMA05-14-50	14	50	32	-
KMA05-14-80	14	80	50	-
KMA05-14-100	14	100	80	-
KMA05-14-125	14	125	100	-
KMA05-22-50	22	50	32	4
KMA05-22-80	22	80	50	4
KMA05-22-100	22	100	80	4
KMA05-22-125	22	125	100	4
KMA05-40-50	40	50	32	4
KMA05-40-80	40	80	50	4
KMA05-40-100	40	100	80	4
KMA05-40-125	40	125	100	4



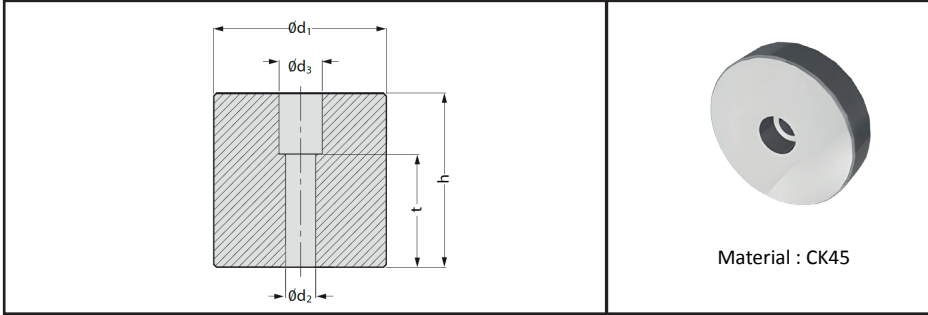
Kod-Code	Form	c	w	a	b
KMA-08-081216	A	16			
KMA-08-081218	A	18			
KMA-08-081220	A	20			
KMA-08-081222	A	22			
KMA-08-081226	A	26			
KMA-08-081232	A	32			
KMA-08-081235	A	35			
KMA-08-081240	A	40			
KMA-08-202080	B		20	20	10
KMA-08-221480	B		22	14	7
KMA-08-303080	B		30	30	15



Material : CK45

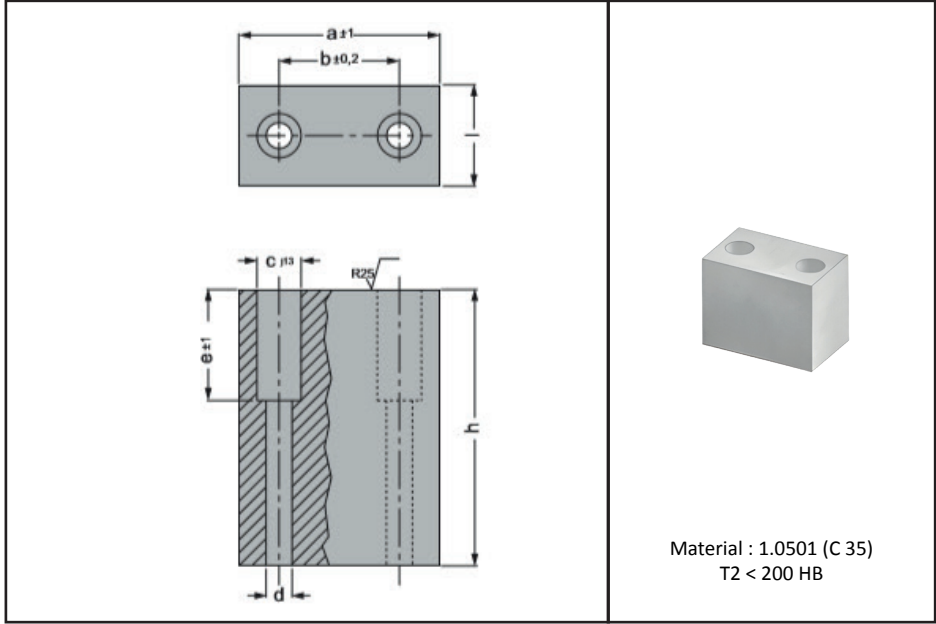
Kod-Code	d1	h1	d2	d3	Civata-Bolt
SSB01-60-h1?	60	40∞160	14	20	M12
SSB01-80-h1?	80	40∞160	14	20	M12
SSB01-100-h1?	100	40∞160	18	26	M16
SSB01-120-h1?	120	40∞160	22	33	M20
SSB01-150-h1?	150	40∞160	22	33	M20

M12			M16		M20	
h1	h2	l5	h2	l5	h2	l5
20∞40	12	30	12	30	12	30
40∞60	22	40	22	40	22	40
60∞80	42	60	42	60	42	60
80∞100	62	80	62	80	62	80
100∞120	82	100	82	100	82	100
120∞140	102	120	102	120	102	120
140∞160	122	140	122	140	122	140

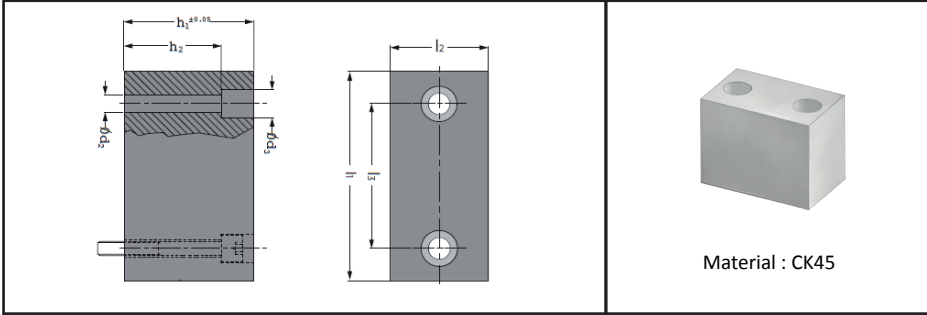


Kod-Code	d1	h	d2	d3	Civata-Bolt
SSB02-30-h?	30	20∞160	9	15	M8
SSB02-40-h?	40	20∞160	11	18	M10
SSB02-50-h?	50	20∞160	13.5	20	M12
SSB02-60-h?	60	20∞160	13.5	20	M12
SSB02-70-h?	70	20∞160	13.5	20	M12
SSB02-80-h?	80	20∞160	13.5	20	M12
SSB02-90-h?	90	20∞160	13.5	20	M12
SSB02-100-h?	100	20∞160	17.5	26	M16
SSB02-120-h?	120	20∞160	17.5	26	M16
SSB02-130-h?	130	20∞160	22	33	M20
SSB02-140-h?	140	20∞160	22	33	M20
SSB02-150-h?	150	40∞160	22	33	M20
SSB02-160-h?	160	40∞160	22	33	M20

	M8	M10	M12	M16	M20
h	t	t	t	t	t
20∞40	10	9	7	-	-
40∞60	28	25	22	20	18
60∞80	48	45	42	40	30
80∞100	68	65	62	60	50
100∞120	68	85	82	80	70
120∞140	68	105	102	100	90
140∞160	68	105	122	120	110



Kod-Code	h	a	l	b	c	d	e
DSB01-55080	55	80	30	55	18	9	20
DSB01-55110	55	110	40	80	22	14	20
DSB01-101080	101	80	35	55	18	9	57
DSB01-137100	137	100	50	60	22	13	55
DSB01-138100	138	100	40	55	22	14	43
DSB01-138120	138	120	60	80	22	14	43



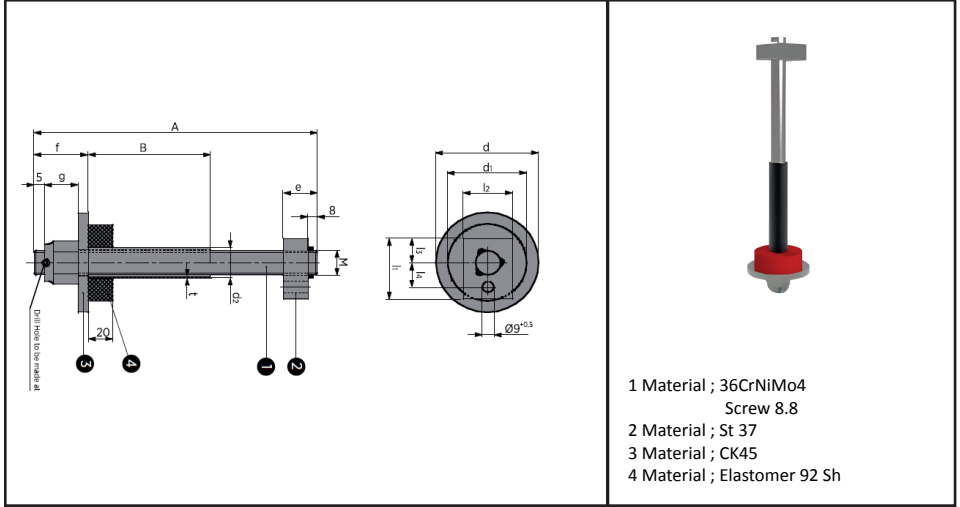
Kalıp  
Elemanları

Kod-Code	l1	l2	l3	Screw	b2	d1	max load
DSB02-01XXX	60	40	40	M8	9	15	50
DSB02-02XXX	80	40	56	M10	11	18	65
DSB02-03XXX	100	40	71	M12	14	20	85
DSB02-04XXX	100	50	76	M12	14	20	110
DSB02-05XXX	120	60	93	M12	14	20	160
DSB02-06XXX	150	80	120	M16	18	26	270

	M8	M10	M12	M16
h1	h2	h2	h2	h2
≥ 20-40	10	8	6	-
≥ 40-60	28	25	22	18
≥ 60-80	48	45	42	38
≥ 80-100	68	65	62	58
≥ 100-120	68	85	82	78
≥ 120-140	68	105	102	98
≥ 140-160	68	105	122	118

Order Example:  
DSB02 - 03 - l1, l2 + h1  
l1=100, l2=40 and h1 =080  
Order Code: DSB02-03-100.40.80

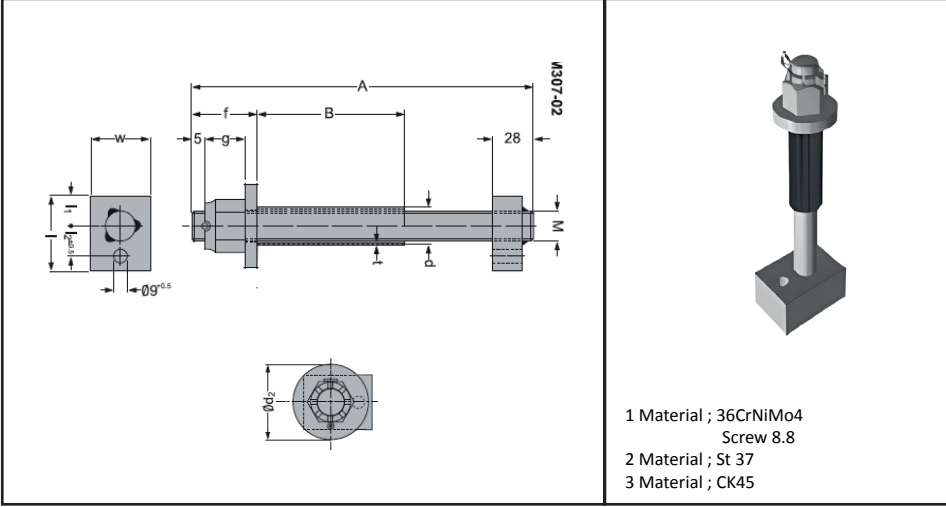




Kod-Code	M	d	d1	d2	e	f	g	l1	l2	l3	l4± 0,5	t	Max. Load (Kg)
FR01-16AAABBB	M16	65	50	22	28	30	19	50	35	20	20	2	250
FR01-20AAABBB	M20	82	63	25	28	35	22	50	40	20	20	2	450
FR01-24AAABBB	M24	105	80	30	38	42	27	50	45	20	20	2,5	750
FR01-30AAABBB	M30	130	100	38	33	50	33	63	50	28	26	2,5	1250

A ve B müşteri tarafından verilir.  
A and B is given by the customer.

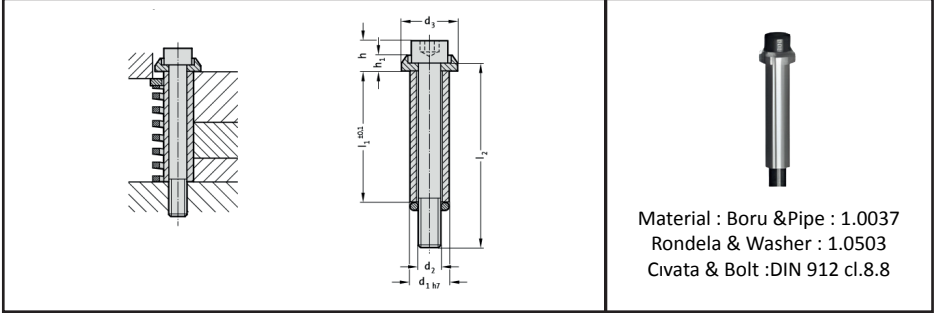
Order Example : M=20, A= 247 and B=110  
Order Code : FR01-20-247110



Kod-Code	M	d	d2	f	g	l	w	l1	l2	Max Load (Kg)
FR02-16AAABBB	M16	22	40	30	19	50	35	20	20	1000
FR02-20AAABBB	M20	25	44	35	22	50	40	20	20	1400

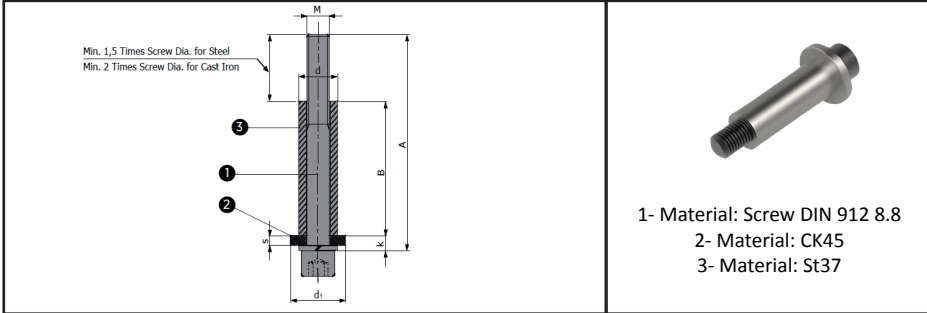
A ve B müşteri tarafından verilir.  
A and B is given by the customer.

Order Example : M=20, A= 247 and B=110  
Order Kodu : FR02-20-247110



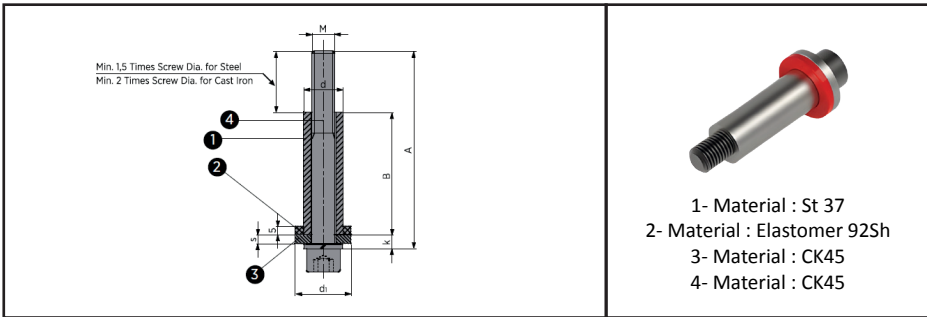
Material : Boru &Pipe : 1.0037  
Rondela & Washer : 1.0503  
Civata & Bolt :DIN 912 cl.8.8

d1	Ø10		Ø12,5		Ø15		Ø17,5		Ø23		
d2	M6		M8		M10		M12		M16		
d3	10		19		23		27		34		
h	10		13		15		18		24		
h1	l1	5,5	l2	6,5	l2	7,5	l2	9	l2	11	l2
20	☺	35	☺	35							
25	☺	40	☺								
30	☺	45	☺	45	☺	50	☺	50			
35	☺	50	☺	50	☺	55					
40	☺	55	☺	55	☺	60	☺	60			
45	☺	60	☺	60	☺	65	☺	65			
50	☺	65	☺	65	☺	70	☺	70	☺	80	
55	☺	70	☺	70	☺	75	☺	80			
60	☺	80	☺	80	☺	80	☺	90	☺	90	
70	☺	90	☺	90	☺	90	☺	100	☺	100	
80	☺	100	☺	100	☺	100	☺	110	☺	110	
90	☺	110	☺	110	☺	110	☺	120	☺	120	
100			☺	120	☺	120	☺	130	☺	130	
110							☺	140	☺	140	
120					☺	140	☺	150	☺	150	
130							☺	180	☺	180	
140									☺	180	
150									☺	200	
Tightening Torque Nm	13		32		65		120		290		



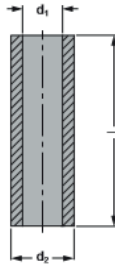
Kod-Code	d	d1	k	M	s	Max Load (kg)
BAC02-10AAABBB	16x2,5	32	6,5	M10	4	100
BAC02-12AAABBB	20x3,5	36	8,5	M12	6	150
BAC02-16AAABBB	28x5,5	45	9,5	M16	6	250

BAC03  
BORULU ASKI CİVATALARI



Kod-Code	d	d1	k	M	s	Max Load (kg)
BAC03-10AAABBB	16x2,5	32	6,5	M10	4	100
BAC03-12AAABBB	20x3,5	36	8,5	M12	6	150
BAC03-16AAABBB	28x5,5	45	9,5	M16	6	250

- A ve B müşteri tarafından verilir.
- A and B is given by the customer.
- Order Example : BAC03-M=12, A= 110 ,B=76



Material : ST35,4

d	6,4	9	11	13	17	22	26	32
d1	10	13	16	20	25	30	36	42
Screw	M6	M8	M10	M12	M16	M20	M24	M30
l:0,5								
27	*							
30		*	*					
33	*		*	*				
38	*		*	*				
40		*	*					
44	*		*	*				
48	*		*	*	*			
50		*	*	*	*	*		
61	*		*	*	*			
63		*	*	*	*	*		
70					*	*		
72	*		*	*	*	*	*	
80	*	*	*	*	*	*	*	
90			*	*	*	*	*	
95					*			
100		*	*	*	*	*	*	
105					*			
115					*			

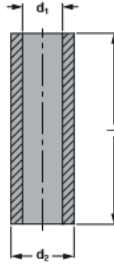
Tablonun Devamı Yan Sayfadadır.  
The rest of the table is on the next page.

125		*	*	*	*	*	*	
135					*			
150		*	*	*	*	*	*	*
155					*			
175					*	*	*	
195					*			
200		*	*	*	*	*	*	*
215					*			
225					*	*	*	
235					*			
250					*	*	*	
255					*			

Farklı uzunluklar talep üzerine üretilir.

Different lengths on request.

Order Example: d1= 20, l= 80 Order Code: EB01-020080



Material : St35.4 Surface hard-  
ened. HRC 56 ÷ 60

d	6,4	9	11	13	17	22	26	32
d1	10	13	16	20	25	30	36	42
Screw	M6	M8	M10	M12	M16	M20	M24	M30
l:0,5								
27	*							
30		*	*					
33	*		*	*				
38	*		*	*				
40		*	*					
44	*		*	*				
48	*		*	*	*			
50		*	*	*	*	*		
61	*		*	*	*			
63		*	*	*	*	*		
70					*	*		
72	*		*	*	*	*	*	
80	*	*	*	*	*	*	*	
90			*	*	*	*	*	
95					*			
100		*	*	*	*	*	*	
105					*			
115					*			

Tablonun Devamı Yan Sayfadadır.  
The rest of the table is on the next page.

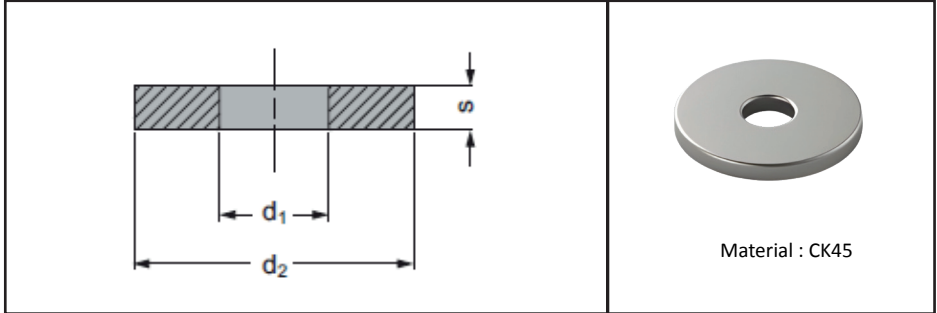
125		*	*	*	*	*	*	
135					*			
150		*	*	*	*	*	*	*
155					*			
175					*	*	*	
195					*			
200		*	*	*	*	*	*	*
215					*			
225					*	*	*	
235					*			
250					*	*	*	
255					*			

Farklı uzunluklar talep üzerine üretilir.

Different lengths on request.

Order Example: d1= 20, l= 80 Order Code: EB02-020080

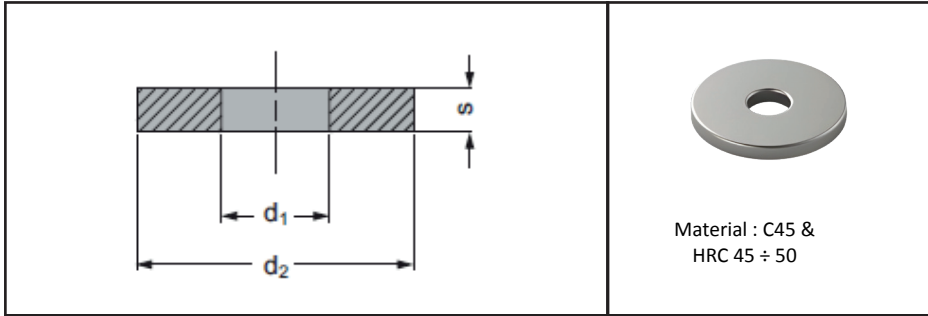




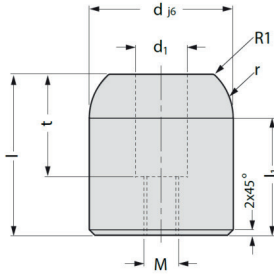
Kod-Code	d2	d1	s
RP01-001	20	8,5	4
RP01-002	25	10,5	5
RP01-003	25	13,5	5
RP01-004	30	13,2	5
RP01-005	30	13,5	5
RP01-006	32	12,5	5
RP01-007	32	12,5	5
RP01-008	32	13	5
RP01-009	32	13,5	6
RP01-010	36	10,5	5
RP01-011	36	13,5	5
RP01-012	36	16,5	5
RP01-013	36	20,5	5
RP01-014	38	17	6
RP01-015	40	13,5	5
RP01-016	45	20,5	5
RP01-017	55	21	8
RP01-018	55	10,5	5
RP01-019	55	13,5	5
RP01-020	55	20,5	5
RP01-021	55	25	10
RP01-022	55	25,5	5
RP01-023	55	30,5	5

Tablonun Devamı Yan Sayfadadır.  
The rest of the table is on the next page.

Kod-Code	d2	d1	s
RP01-024	60	12,5	5
RP01-025	60	16,5	5
RP01-026	75	12,5	5
RP01-027	75	16,5	5
RP01-028	90	16,5	5
RP01-029	90	21	5
RP01-030	120	21	5

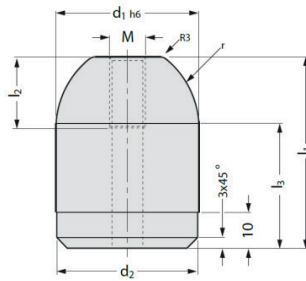
 RP02  
 RONDELA  
 Washer


Kod-Code	d2	d1	s
RP02-001	17	6,4	3
RP02-002	23	8,4	4
RP02-003	26	10,5	4
RP02-004	30	13	5
RP02-005	35	17	4
RP02-006	35	17	5
RP02-007	35	17	6
RP02-008	42	21	8
RP02-009	46	21	6
RP02-010	46	25	10
RP02-011	55	25	10



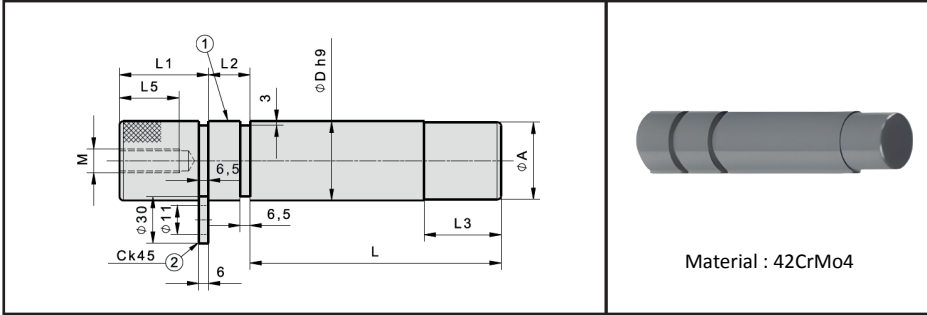
Material : 16MnCr5 Hard-  
ened HRC 58 ÷ 60

Kod-Code	d	l	l1	d1	t	M	r
MRP01-2245	22	45	37.5	14	25	M10	20
MRP01-3250	32	50	40	18	35	M12	20
MRP01-4055	40	55	40	18	35	M12	20
MRP01-5055	50	55	40	18	35	M12	20



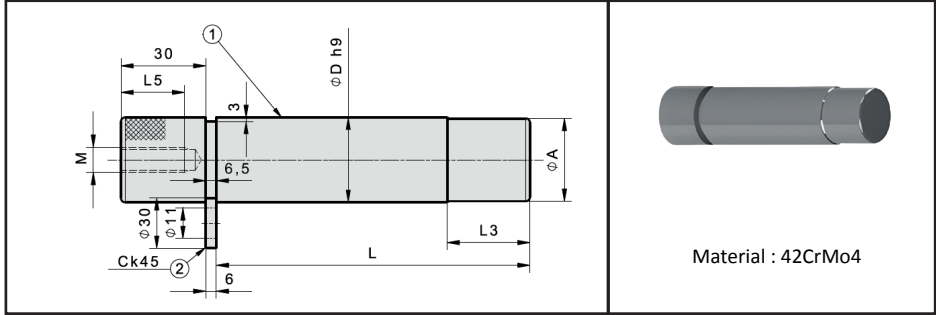
Material : 16MnCr5 Hardened  
HRC 58 ÷ 60

Kod-Code	d1	l1	l2	l3	d2	M	r
MRP02-2245	22	45	16	35	21.95	M8	15
MRP02-2255	22	55	16	45	21.95	M8	15
MRP02-3250	32	50	20	35	31.95	M10	20
MRP02-4055	40	55	20	35	39.95	M10	25
MRP02-4065	40	65	20	45	39.95	M10	25
MRP02-5055	50	55	20	35	49.95	M10	25
MRP02-5680	56	80	20	60	55.95	M10	30



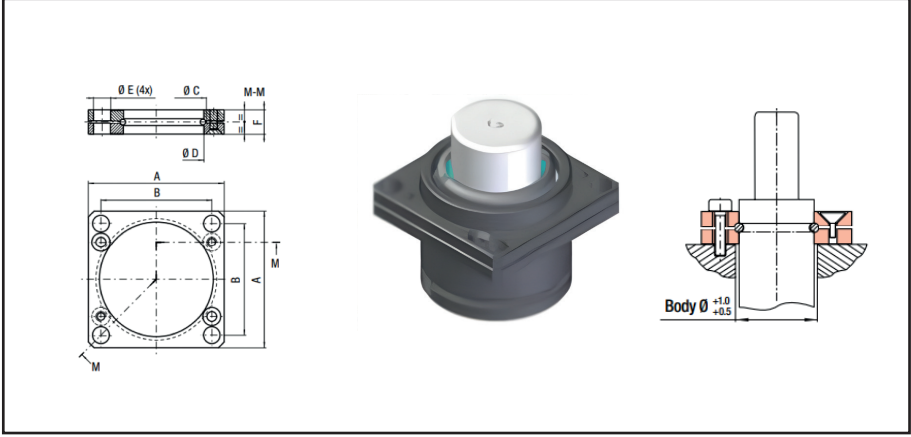
Kalip  
Elemanları

Kod-Code	D	L	A	L1	L2	L3	L5	M
AB03-25-81	25	81	23	22	20	19	15	M8
AB03-25-98	25	98	23	22	20	19	15	M8
AB03-32-103	32	103	30	22	25	26	15	M8
AB03-32-148	32	148	30	22	25	26	15	M8
AB03-40-132	40	132	38	32	32	33	20	M10
AB03-40-192	40	192	38	32	32	33	20	M10
AB03-50-165	50	165	40	32	40	41	20	M10
AB03-50-220	50	220	40	32	40	41	20	M10
AB03-63-210	63	210	61	32	50	51	25	M12
AB03-63-250	63	250	61	32	50	51	25	M12



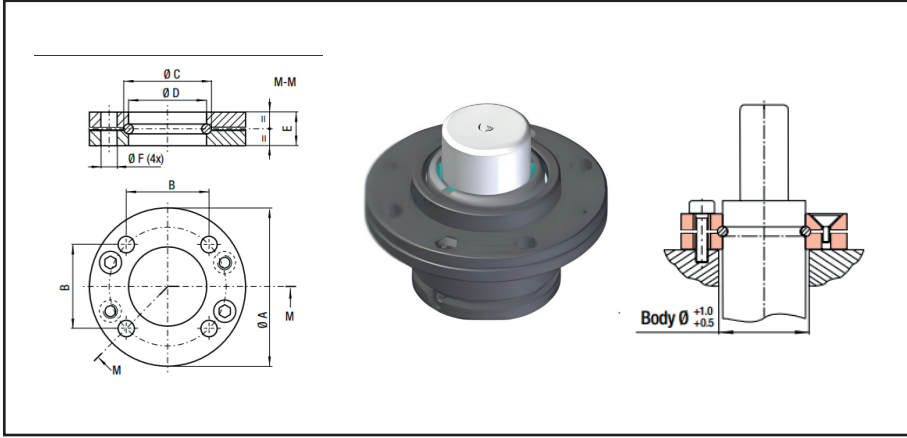
Kod-Code	D	L	A	L3	L5	M
AB04-20-81	20	81	18	19	15	M8
AB04-25-81	25	81	23	19	15	M8
AB04-25-98	25	98	23	19	15	M8
AB04-32103	32	103	30	26	15	M8
AB04-32148	32	148	30	26	15	M8
AB04-40132	40	132	38	33	20	M10
AB04-40192	40	192	38	33	20	M10
AB04-50165	50	165	48	41	20	M10
AB04-50220	50	220	48	41	20	M10
AB04-63210	63	210	61	51	25	M12
AB04-63250	63	250	61	51	25	M12
AB04-80210	80	210	78	51	25	M12





Kod-Code	A	B	ØC	ØD	ØE	F
GYT57-32	47	35	34	32,5	7	9
GYT57-38	52	40	40	38,5	7	9
GYT57-45	64	50	47	45,5	9	13
GYT57-50	70	56,5	54	50,5	9	13
GYT57-63A	90	73,5	67	63,5	11	16
GYT57-63	80	64	67	63,5	11	16
GYT57-75	90	73,5	80	75,5	11	16
GYT57-95	110	92	100	95,5	13,5	18
GYT57-120	130	109,5	125	120,5	13,5	21
GYT57-150	162	138	155	150,5	17,5	27
GYT57-195	210	170	200	195,5	17,5	27

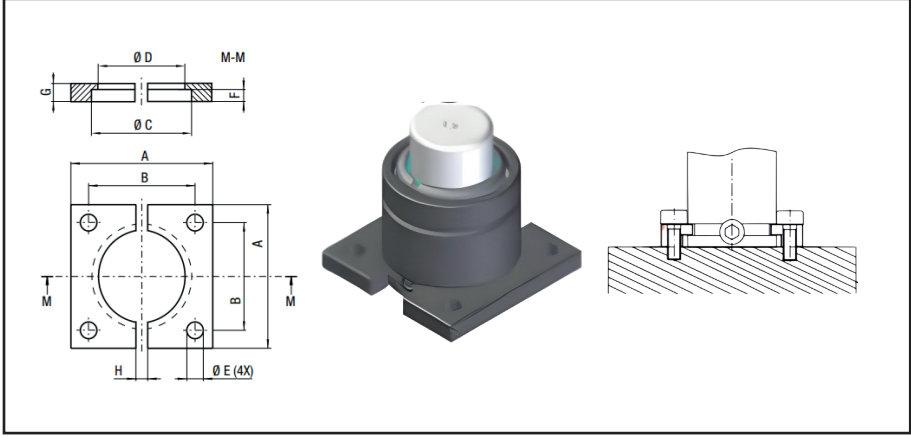
- Segman ve DIN7991 montaj civataları ile birlikte verilir.
- Piston ring and DIN7991 Supplied with mounting bolts.



Kod-Code	A	B	ØC	ØD	E	ØF
GYT55-32	60	35	34	32,5	9	7
GYT55-38	68	40	40	38,5	9	7
GYT55-45	86	50	47	45,5	13	9
GYT55-50	95	56,5	54	50,5	13	9
GYT55-63	122	73,5	67	63,5	16	11
GYT55-75	122	73,5	80	75,5	16	11
GYT55-95	150	92	100	95,5	18	13,5
GYT55-120	175	109,5	125	120,5	21	13,5
GYT55-150	220	138	155	150,5	27	17,5
GYT55-195	290	170	200	195,5	27	17,5

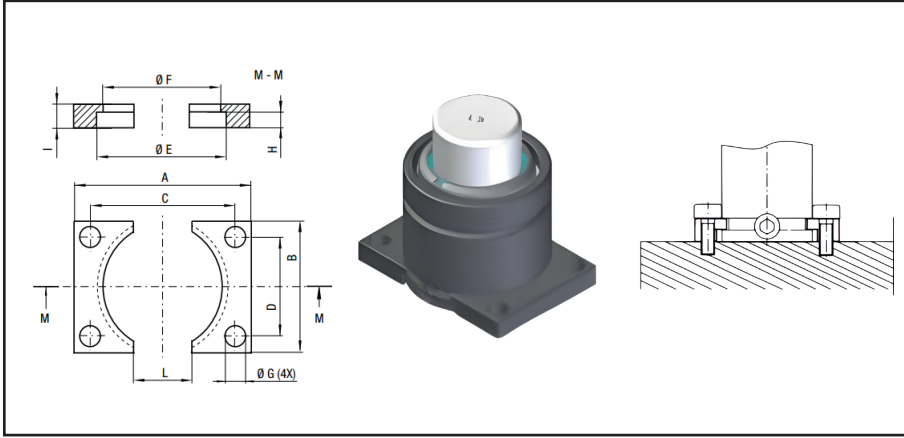
- Segman ve DIN7991 montaj civataları ile birlikte verilir.
- Piston ring and DIN7991 Supplied with mounting bolts.





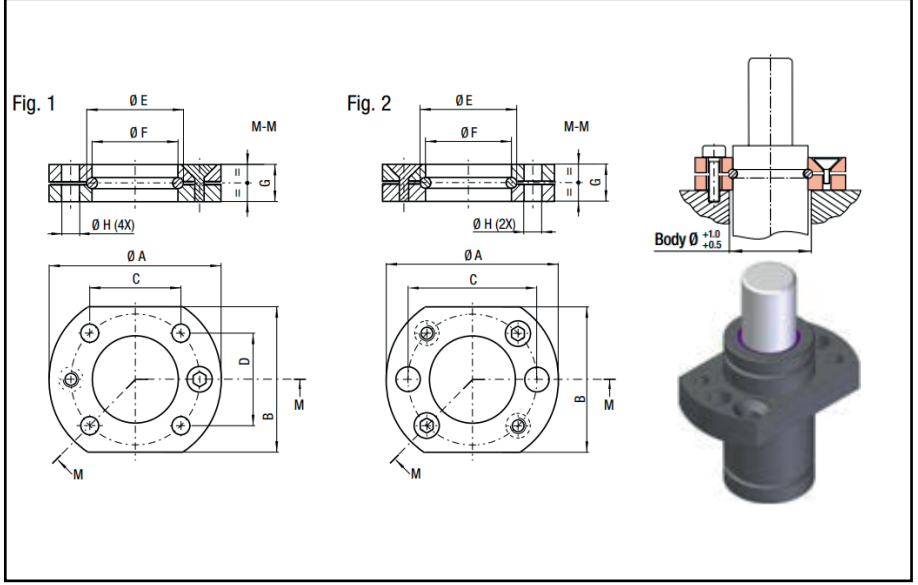
Kod-Code	A	B	ØC	ØD	ØE	F	G	H
GYT22-32	50	35	32,5	28,5	6,6	4	7	5
GYT22-38	55	40	38,5	34,5	7	4	7	5
GYT22-45	70	50	45,5	41,5	9	4	7	20
GYT22-50	75	56,5	50,5	44,5	9	8	12	24
GYT22-63	85	63,5	63,5	57,5	11	8	12	24
GYT22-75	100	73,5	75,5	68,5	11	8	12	24
GYT22-95	120	92	95,5	88,5	13,5	8	12	24
GYT22-120	140	109,5	120,5	113,5	13,5	8	12	24
GYT22-150	190	138	150,5	143,5	17,5	8	12	24
GYT22-195	210	170	195,5	188	17,5	8	13	24

- Segman ve DIN7991 montaj civataları ile birlikte verilir.
- Piston ring and DIN7991 Supplied with mounting bolts.



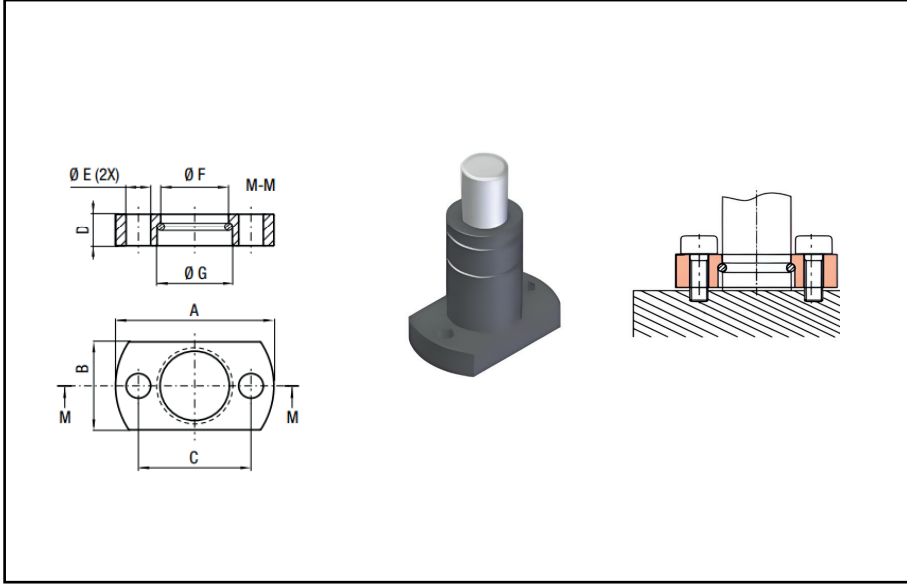
Kod-Code	A	B	C	D	ØE	ØF	ØG	H	I	L
GYT23-32	50	27	40	18	32,5	28,5	6,6	4	7	20
GYT23-38	55	33	44	20	38,5	34,5	6,6	4	7	20
GYT23-45	70	40	57	27	45,5	41,5	9	4	7	25
GYT23-50	75	45	62	32	50,5	44,5	9	8	12	25
GYT23-63	85	58	69	42	63,5	57,5	11	8	12	30
GYT23-75	100	70	84	54	75,5	68,5	11	8	12	30
GYT23-95	120	90	100	70	95,5	88,5	13,5	8	12	40
GYT23-120	140	115	120	95	120,5	113,5	13,5	8	12	50
GYT23-150	190	145	165	120	150,5	143,5	17,5	8	12	60
GYT23-195	210	190	185	165	195,5	188	17,5	8	13	80

- Segman ve DIN7991 montaj civataları ile birlikte verilir.
- Piston ring and DIN7991 Supplied with mounting bolts.



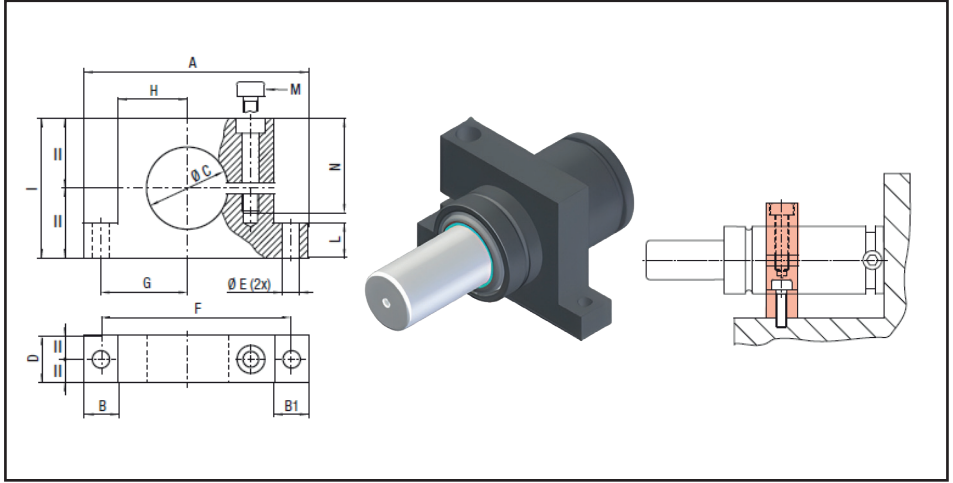
Kod-Code	A	B	C	D	ØE	ØF	G	ØH	Fig.
GYT54-12	34	21	24		13,7	12,5	9	6,6	2
GYT54-15	37	24	27		16,7	15,5	9	6,6	2
GYT54-19A	44	25	30	12	21,9	19,5	9	6,6	1
GYT54-25A	50	30	34	18	27,9	25,5	9	6,6	1
GYT54-19	44	25	32		21	19,5	9	6,6	2
GYT54-25	50	30	38		21	25,5	9	6,6	2

- Segman ve DIN7991 montaj civataları ile birlikte verilir.
- Piston ring and DIN7991 Supplied with mounting bolts.

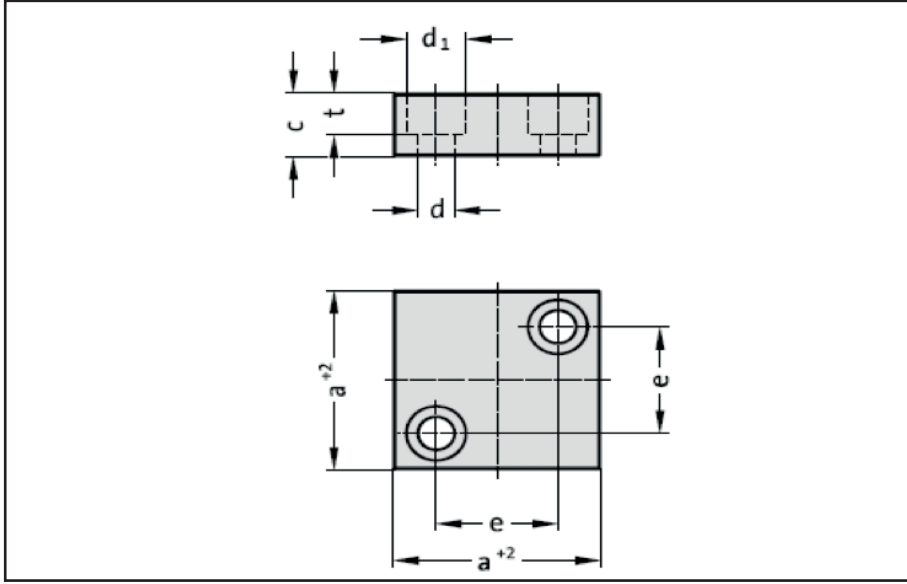


Kod-Code	A	B	C	D	ØE	ØF	ØG
GYT24-19	45	25	32	9,2	7	19,3	21,4
GYT24-25	50	30	38	9,2	7	25,3	27,4

- Segman ve DIN7991 montaj civataları ile birlikte verilir.
- Piston ring and DIN7991 Supplied with mounting bolts.



Kod-Code	A	B	B1	ØC	D	ØE	F	G	H	I	L	M	N
GYT25-32	90	18	18	32	20	9	72	31	22	45	15	M8	39
GYT25-32A	90	18	18	32	30	8,5	72	31	22	45	15	M8	40
GYT25-38	95	18	18	38	20	9	77	34	25	55	15	M8	45
GYT25-38A	95	17	19	38	30	8,5	77	34	25	55	15	M8	46
GYT25-45	100	18	18	45	20	9	82	37	28	60	15	M8	45
GYT25-45A	100	18	18	45	30	8,5	82	37	28	60	15	M8	52
GYT25-50	130	20	20	50	30	9	110	50	40	80	20	M8	55
GYT25-75	160	22.5	22.5	75	30	11	137	63.5	52.5	105	20	M10	88
GYT25-95	195	25	25	95	30	13,5	170	80	67.5	125	20	M12	99.5
GYT25-120	220	27.5	27.5	120	30	13,5	195	92.5	77.5	148	20	M12	106
GYT25-150	260	30	30	150	30	13,5	230	110	95	200	20	M12	138



Kod-Code	a +2	c -0,05	d	d1	e +0,2	t
GYEP01-00100	40	15	9	15	21	10
GYEP01-00100.2	40	15	7	11	24	7
GYEP01-00750	56	20	11	18	32	13
GYEP01-03000	71	20	11	18	48	13
GYEP01-03000.2	70	15	9	15	50	9
GYEP01-03000.1	90	20	11	18	67	13
GYEP01-07500.2	90	15	9	15	70	9
GYEP01-07500	140	20	11	18	110	13

- Material : 1,2842 & 1,2379 - 58 & 62 Hrc



2002  
Kuruluş - Since

100\*

Genesis Kalıp Aparat Mühendislik San. ve Tic. Ltd. Şti



[www.gnskalip.com](http://www.gnskalip.com)



Üçevler Küçük Sanayi  
Sitesi 21.Sk. 34.Blok  
No:71 16130 Nilüfer  
BURSA / TÜRKİYE



+90 0533 435 44 52  
[info@gnskalip.com](mailto:info@gnskalip.com)



**GNS**  
KALIP STANDARTLARI